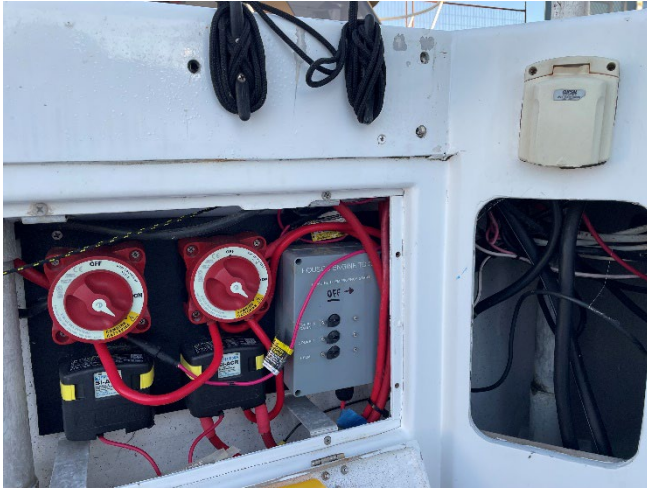


## Start Boat “BRUCE” – START UP GUIDE

### POWER & BATTERIES, PORT SIDE



Unplug shore power, coil lead on power pedestal on marina.

Switch both batteries (2) around clockwise to yellow section “COMBINE BATTERIES”

Flick on three House Battery switches to the LEFT for ON: Toilet & Cabin, Cockpit, Helm.

Close battery hatch cover.

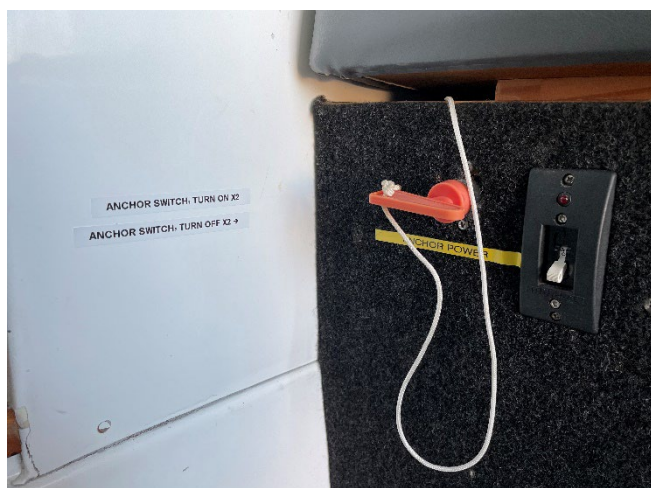
### INSIDE CABIN



Turn on RADIO. This powers the two downstairs VHF radios, accessed from inside the cabin or outside the cabin with the additional handsets.

Press Clear, Clear, to skip entering MMSI on radio units.

Other switches can be turned on if needed (e.g. fan, pump for hand taps, lights)



Power switch for anchor windlass is on the side of the bench seat. Turn red lever up and flick switch to power on. (Image shows off position).

Blue light shows when powered.

## ON FLY BRIDGE



Switch panel is on left hand side of consol.

Turn on RADIO. This powers the two upstairs radios, one on console and one on ceiling.

We recommend turning the radios off during racing when the downstairs radios are in use.

Turn on WIND INSTRUMENTS. This powers the plotter screen on the Fly Bridge console, and the wind and instruments screens downstairs on the outside of the cabin.



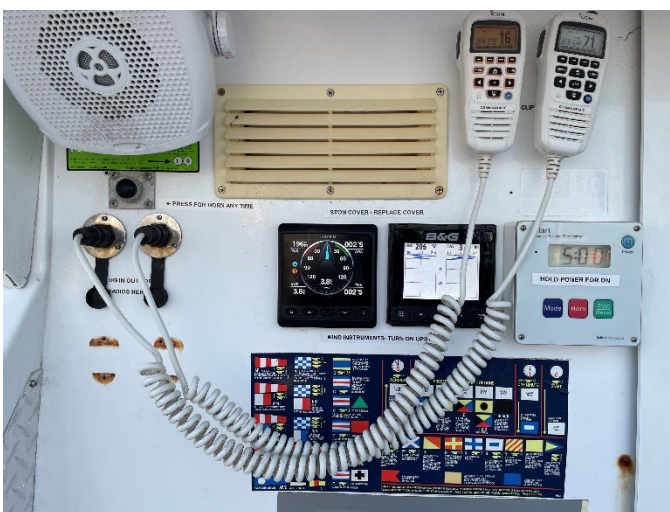
Stow screen covers.

Turn on PLOTTER SCREEN, press the power button. Downstairs screen will only turn on when the main plotter unit is on.

HORN can be sounded as needed, press round button.

ANCHOR WINDLASS can be let out or in as needed. Only use the anchor windlass with the engine running. Use the engine power (e.g. slight drive forward) to assist the anchor windlass as needed.

## WORKING DECK



Stow screen covers.

Plug and screw in VFH RADIO receivers (kept in cabin cupboard).

WIND INSTRUMENTS, press power button.

ISTART, press and hold power button. Instructions for changing the program all on the wall.

HORN can be sounded as needed, press round black button -or- use ISTART horn button.



## ENGINE START UP



KILL CORD clipped to receiver.

KEY in ignition, turn RIGHT. Engine consol screen will turn on.

TRIM ENGINES DOWN

THROTTLE IN NEUTRAL Move up and back to check it is in neutral. Press "neutral hold" if needed



CHECK PROP is clear of obstructions

POWER PORT ENGINE Press Port start/stop button.

POWER STARBOARD ENGINE Press Starboard start/stop button

CHECK ENGINE TELL TALE Water should be streaming from each engine before engaging throttle.



When planning to leave dock, communicate with crew and have a plan in place for lines and fenders.

DRIVER MUST have kill cord attached to wrist whenever vessel is underway.

A RADIO CHECK must be performed before leaving the marina.

Stow fenders, lines etc.

## HEAD (TOILET)



The HEAD is flushed by pressing the black button behind the toilet. It will take a few seconds before water comes through.

Please DO NOT flush any paper or sanitary items, instead bag any waste a place in the bin.

Save POOs for back on land, or if desperate, rubbish bag it up.

BIN must be EMPTIED at end of day by the CREW TEAM.

Please keep tidy.

# Start Boat “BRUCE” – SHUT DOWN GUIDE

## ON FLY BRIDGE

When back in marina:

CENTER engines using steering wheel. TURN OFF engines, press PORT start/stop, STB start/stop. TRIM ENGINE UP.

Turn RADIO and PLOTTER OFF at black switch panel.

Replace all INSTRUMENT COVERS.

Remove key and kill cord.

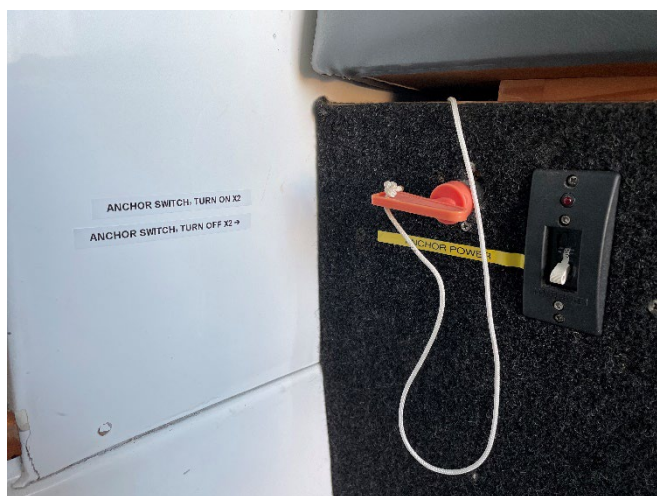
## WORKING DECK



Remove RADIO receivers, return to cabin cupboard.

Replace all INSTRUMENT COVERS.

## INSIDE CABIN



Turn ANCHOR WINDLASS OFF. Power switch for anchor windlass is on the side of the bench seat. Turn red lever to left and flick switch to power off. (Image shows off position).

Turn RADIO and any other OFF at black switch panel. This powers the two downstairs VHF radios, accessed from inside the cabin or outside the cabin with the additional handsets.

EMPTY BINS/RUBBISH and TAKE OFF boat.

## POWER & BATTERIES, PORT SIDE



Flick on three House Battery switches to the RIGHT for OFF: Toilet & Cabin, Cockpit, Helm.

Switch both batteries (2) around anticlockwise pointing up to OFF

Plug in shore power, ensure power is ON at the power pedestal on marina.

Close battery hatch cover.

Ensure all mooring lines are securely in place.