

BLAIRGOWRIE YACHT SQUADRON



**BYS Women's Sportsboat Regatta**  
**SAILING INSTRUCTIONS**

**16 & 17 March 2024**

Organising Authority

BLAIRGOWRIE YACHT SQUADRON

2900 Nepean Road, Blairgowrie 3942, Victoria

The notation '[DP]' in a rule in the NOR or SI means that the penalty for a breach of that rule may, at the discretion of the protest committee, be less than disqualification.

## 1 RULES

- 1.1 The racing will be governed by:
  - a) The rules as defined in the 2024-2024 Racing Rules of Sailing (RRS).
  - b) Appendix UF, Umpired Fleet Racing – BYS Women's Sportsboat Regatta Edition will apply.
  - c) The rules for the handling of boats as detailed in the Sailing Instructions, will apply, and will also apply to any practice sailing. Class rules will not apply.
- 1.2 The notation '(NP)' in a rule of the notice of race or sailing instructions means that a boat may not protest another boat for breaking that rules. This changes RRS 60.1(a).
- 1.3 (NP) [DP] Competitors shall always wear personal floatation devices while afloat, except briefly when changing or adjusting clothing or personal equipment.
- 1.4 If there is conflict in or between rules or regulations (other than RRS), Notice of Race or Sailing Instructions, the Sailing Instructions shall take precedence. This changes RRS 63.7.

## 2 NOTICES TO COMPETITORS

- 2.1 Notices to competitors will be posted on the online official notice board at [www.bys.asn.au/2024-womens-sportsboat-regatta](http://www.bys.asn.au/2024-womens-sportsboat-regatta)

## 3 CHANGES TO SAILING INSTRUCTIONS

- 3.1 Any change to the Sailing Instructions will be posted on the Official Notice Boards at least 2 hours before the scheduled time for the first race on the day it will take effect and signalled in accordance with RRS Race Signals. Any change to the time of the first warning gun for the commencement of the days racing schedule will be posted by 1900 hrs on the day before the changes will take effect.
- 3.2 The race committee may change the format or terminate any stage of the event when, in its opinion it is impractical to attempt to hold the remainder of matches under existing conditions or in the remaining time scheduled. Race sessions may be brought forward and early stages may be terminated in favour of later stages.

## 4 SIGNALS MADE ASHORE

- 4.1 Signals made ashore will be displayed on the eastern-most halyards of the BYS flag pole in front of the clubhouse and also on a flag pole located adjacent to the hardstand.
- 4.2 When flag AP is displayed ashore, '1 minute' is replaced with 'not less than 30 minutes' in the race signal AP. This changes Race Signals AP.

## 5 SCHEDULE OF EVENTS

### 5.1 REGISTRATION, BRIEFING & SOCIAL SCHEDULE

Date	Event	Time
Sat 16 March	Registration (Clubhouse)	0800 - 0815 hrs
	Information Briefing (Clubhouse)	0815 hrs
	After racing Dinner (Clubhouse)	1900 hrs

Sun 17 March	Presentation (Clubhouse)	Approx. 1830 hrs
--------------	--------------------------	------------------

## 5.2 RACING SCHEDULE

Date	Racing Sessions	
Fri 15 March	J/70 training day. Teams to contact Michelle in BYS Sailing Office to arrange access to boats	<b>1000 – 1700 hrs</b>
Sat 16 March	Racing Session #1. RED (3 races)	<b>Warning: 1000 hrs</b>
	Racing Session #2. WHITE (3 races)	<b>Warning: approx. 1200 hrs</b>
	Racing Session #3. GREEN (3 races)	<b>Warning: approx. 1400 hrs</b> Top 2 from RED session Top 2 from WHITE session
	Racing Session #4. YELLOW (3 races)	<b>Warning: approx. 1600 hrs</b> Bottom 2 from RED session Bottom 2 from WHITE session
Sun 17 March	Racing Session #5. PURPLE. (3 races)	<b>Warning: 0930 hrs</b> Top 2 from GREEN session Top 2 from YELLOW session
	Racing Session #6. BLACK. (3 races)	<b>Warning: approx. 1130 hrs</b> Bottom 2 from GREEN session Bottom 2 from YELLOW session
	Ranking of final positions (1-12)	
	<b>Final Session</b> (up to 5 races) Top 5 boats from ranking to race in final session	<b>Warning: approx. 1330 hrs</b> Outcome of final determines overall positions.

5.3 The regatta will consist of a round robin qualifying series and a final series. The qualifying series will be divided into six race sessions, with a maximum of 9 races to be sailed by each team. All competitors will be on the water, half the teams will be on boats competing with the other half on transfer vessels. Competitors will be transferred on and off boats between race sessions.

5.4 Teams will be seeded by the Race Committee for sessions RED and WHITE and randomly allocated to boats for each racing session. The racing schedule allocates 8 teams to the boats provided and determines the sequence in which teams will swap in and out between race sessions.

## 6 CLASS FLAG

6.1 The class flag will be a white flag with the J70 class logo.

## 7 RACING AREA

7.1 The racing area will be approximately 0.6-1.5nm to the north east of the BYS clubhouse over an area known as the Sorrento Channel and the South Sand or Capel Sound (refer to Addendum B).

## 8 THE COURSES

8.1 The diagrams and associated notes in Addendum C show the course and marks, the order in which marks are to be passed, and the side on which each mark is to be left.

8.2 No later than the warning signal, the race committee vessel may indicate the approximate magnetic compass bearing from the starting line to Mark 1.

8.3 In the event that only one of either Mark 1S, 1P, 4S or 4P are not in place, boats shall round the single mark 1 or 4 to port.

## 9 MARKS

9.1 The Start and Finish Pin mark shall be a black and white inflatable cylindrical buoy.

9.2 Marks 1S, 1P, 4S and 4P will be orange inflatable truncated conical buoys.

9.3 Replacement mark will be a pink inflatable truncated conical buoy.

## 10 THE START

10.1 To alert boats that a race starting sequence will begin soon, an orange flag will be flown from the race committee vessel with one sound signal two minutes before the commencement of the start sequence.

10.2 Start Sequence will be 3 minutes from the raising of the class flag (Warning Sound signal) to lowering of the class flag (Start Sound signal). This amends rule 26.

10.3 The starting line shall be between a race committee vessel displaying an orange flag at the starboard end and the course side of a black and white inflatable mark at the port end.

10.4 A boat starting later than 4 minutes after her starting signal will be scored Did Not Start without a hearing. This changes RRS A4 and A5.

## 11 CHANGE OF THE NEXT LEG OF THE COURSE

11.1 The race committee may change the position of the next mark in accordance with RRS 33, subject to the amendments detailed in this clause.

11.2 When the next leg of the course is changed, the race committee shall lay a new mark as described in clause 9.3 and remove the original mark(s) as soon as practicable.

11.3 In the event that the position of Mark 1 is changed, Marks 1S and 1P may be replaced by a new single Mark 1 and boats will round the new Mark 1 and proceed directly to Marks 4S/4P or the finishing line, as appropriate.

## 12 THE FINISH

12.1 A blue flag flown from the race committee vessel will indicate the finishing vessel is on station for the finish.

12.2 The finishing line will be between a staff displaying a blue flag on the race committee vessel and a black and white inflatable mark.

12.3 The race committee vessel will be on the port end of the line when viewed from Marks 1S and 1P

## 13 ON-WATER UMPIRING AND PENALTY SYSTEM

13.1 Appendix UF Umpired Fleet Racing – BYS Women’s Sportsboat Regatta Edition will apply.

## 14 TIME LIMITS AND TARGET TIMES

14.1 The time limits and target times are as follows

Race Time Limit	Mark 1 Time Limit	Race Target Time
35 mins	15 mins	15 mins

14.2 A boat that fails to finish within the Time Limit shall be scored DNF. This changes RRS 35.

- 14.3 The finish window will be 5 minutes. Closure of the finish window will be indicated by lowering of the blue flag on the finish boat at 5 mins after the first boat sails the course and finishes, or if all boats have finished, after the last boat has finished (whichever is sooner) accompanied by 1 sound signal. On closure of the finish window, all boats not yet finished are to return to the starting area for the next race if one is scheduled.
- 14.4 If no boat has rounded Mark 1 within 15 minutes of the start signal the race may be abandoned.
- 14.5 Failure to meet the target time will not be grounds for redress. This changes rule 62.1(a).
- 14.6 Boats that are still racing at the closure of their finish window (but within the Race Time Limit) will be given an allocated place based on their position in the fleet at the time. This changes rules 35, A4 and A5.

## **15 BOAT IDENTIFICATION**

- 15.1 Each boat will be identified by its bow number (Addendum A).

## **16 SCORING**

- 16.1 The low point scoring system of Appendix A, as changed below, will apply.
- 16.2 A maximum of 9 races per team are scheduled in the round robin qualifying series, a boat's overall qualifying score shall be the sum of her race scores.
- 16.3 The top five boats will qualify for the final series.
- 16.4 A maximum of 5 races are scheduled for the final series, a boat's overall score shall be the sum of her race scores in the finals series. Scores from the qualifying series do not count towards the final series scores.
- 16.5 Five races per team will constitute a series.
- 16.6 Ties will be resolved in accordance with RRS A8.  
This changes RRS Appendix A2

## **17 SAFETY REGULATIONS**

- 17.1 All teams intending to race shall sign using the sign-on via the electronic link. Signing on will apply to all race sessions for that day.
- 17.2 All teams are required to sign off using the electronic link as soon as practicable after returning to shore at the completion of the day's racing.
- 17.3 The sign on period will close at the scheduled warning signal time of the first race for that session on that day.
- 17.4 The sign off period will close 60 minutes after the last boat has completed the last race of the day.
- 17.5 Failure to Sign On/Sign Off in accordance with SI.17.1 and 17.2 will result in that team being scored a DP of 50% of their finishing place in the first race of the day without a hearing. This changes Rule 63.1, A4 and A5.
- 17.6 A team that retires from a race shall notify the race committee as soon as possible.
- 17.7 No races shall be started or continued if the average wind (measured over the previous 15 mins) is less than 5 knots or more than 22 knots.

## **18 SUPPORT BOATS**

- 18.1 Coaches and support boats must remain well away from the start area, the course area and racing areas from the time of the first warning signal while racing.

## **19 OFFICIAL BOATS**

- 19.1 Official boats will be marked with a BYS Burgee.

## **20 RADIO COMMUNICATION**

- 20.1 All boats shall carry a marine band VHF transceiver capable of receiving and transmitting Marine VHF channels. Boats shall use the radio to report retirement from racing the end of the racing session and may use the radio to request assistance in an emergency.
- 20.2 The race committee may use VHF radio to advise competitors of general matters relating to racing (including recalls at the start) or for emergency or safety purposes.
- 20.3 The use of mobile phones or any device capable of sending and/or receiving external electronic communication and/or connecting to the internet is prohibited after the first warning signal until

the boat has finished racing, except in an emergency threatening the safety of a crew member or the flotation of the boat and only with the express permission of the race committee.

20.4 Except in an emergency, a boat that is racing shall not make voice or data transmissions and shall not receive voice or data communication that is not available to all boats.

20.5 There will be a dedicated VHF radio frequency for this regatta, VHF Ch 69.

20.6 The BYS tower call sign is "Blairgowrie".

20.7 The race committee vessel call sign is "Start".

## **21 TROPHIES and PRIZES**

21.1 Prizes will be awarded for 1st, 2nd and 3rd places after completion of the finals series. In the event of no final series being sailed, places will be awarded based on placings in the final table.

## **22 DISCLAIMER OF LIABILITY**

22.1. Competitors participate in the regatta entirely at their own risk. The organizing authority will not accept any liability for material damage or personal injury or death sustained in conjunction with or prior to, during, or after the regatta.

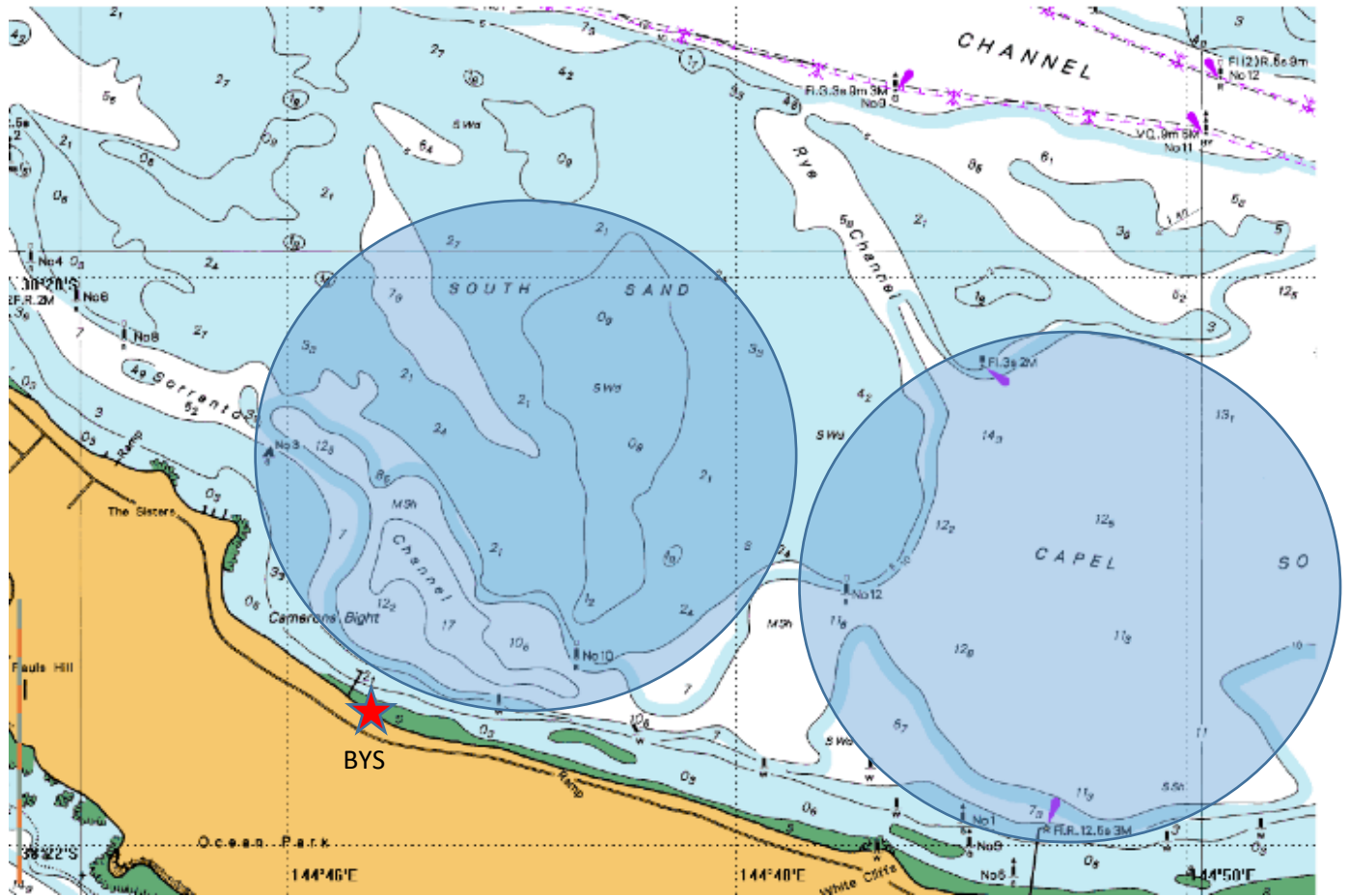
## **23 INSURANCE**

23.1 All competitors are required to have adequate third-party personal liability insurance coverage.

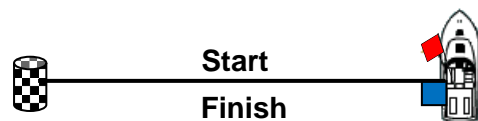
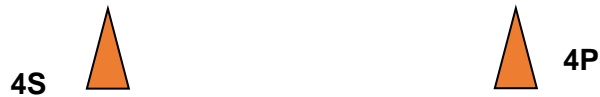
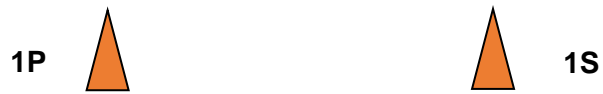
## **ADDENDUM A - COMPETITOR BOATS**

<b>Boat #</b>	<b>Bow Number</b>	<b>Boat Name</b>
Boat 1	96	Spike
Boat 2	25	Javelin
Boat 3	22	Notte Bianca
Boat 4	84	Maw Civilised
Boat 5	83	Lithium

# ADDENDUM B – RACING AREA



## ADDENDUM C – COURSE DESCRIPTION



**COURSE: Start, 1S/1P, 4S/4P, 1S/1P, Finish**

Marks 1S & 1P are orange inflatable truncated conical buoys

Marks 4S & 4P are orange inflatable truncated conical buoys

Start/Finish Pin is a black/white checked inflatable buoy

Replacement mark is a pink inflatable truncated conical buoy



## **SI ADDENDUM D: HANDELING OF BOATS**

### **D1 GENERAL**

D1.1 While all reasonable steps are taken to equalise the boats, variations will not be grounds for redress. This changes RRS 62.

### **D2 PROHIBITED ITEMS AND ACTIONS**

Except in an emergency or in order to prevent damage or injury, or when directed by an umpire otherwise, the following are prohibited:

- D2.1 Any additions, omissions or alterations to the equipment supplied.
- D2.2 The use of any equipment for a purpose other than that intended or specifically permitted.
- D2.3 The replacement of any equipment without the sanction of the RC.
- D2.4 Sailing the boat in a manner that it is reasonable to predict that significant further damage would result.
- D2.5 Moving equipment from its normal stowage position except when being used.
- D2.6 Boarding a boat without prior permission.
- D2.7 Taking a boat from its berth or mooring without having paid the required damage deposit or having permission from the RC, or, on race days, while 'AP' is displayed ashore.
- D2.8 Hauling out a boat or cleaning surfaces below the waterline.
- D2.9 Marking directly on the hull or deck with permanent ink or using any tape that leaves a residue. Use of duct tape.
- D2.10 Omitting any headsail car or turning block before sheeting onto a winch.
- D2.11 Adjusting or altering the tension of standing rigging.
- D2.12 Using a winch to adjust mainsheet or vang.
- D2.13 Perforating sails, even to attach tell tales.
- D2.19 The use of electronic equipment other than a compass and watches.
- D2.20 Use of shrouds and stays to facilitate tacking or gybing, or to aid the projection of a crew member outboard is prohibited.
- D2.21 Having the bowsprit extended, except when in the process of setting, flying or taking down the asymmetrical spinnaker. The bowsprit shall be fully retracted before rounding a windward gate mark and before rounding a leeward gate mark.
- D2.22 Crewing from in front of the mast.
- D2.23 Using a boat while under the influence of alcohol or drugs.
- D2.24 Smoking while on the boat.

### **D3 PERMITTED ITEMS and ACTIONS**

- D3.1 Taking on board the following equipment:
  - Basic hand tools
  - Adhesive tape
  - Line (elastic or otherwise of 4mm diameter or less)
  - Telltale material
  - Handheld compass
  - Shackles and clevis pins
- D3.2 Using the items in D3.1 to:
  - Prevent fouling of lines, sails and sheets
  - Attach tell tales (stick on only)
  - Prevent sails being damaged or falling overboard
  - Mark control settings
  - Make minor repairs and permitted adjustments

#### **D4 MANDATORY ITEMS and ACTIONS**

- D4.1 The completion of a written damage report before leaving a boat and submitting it to the RC, even if no damage or loss is recorded. Reports shall include any evidence of matters which could cause damage or disadvantage to the boat in future matches. When boats swaps are carried out on the water, the report should be made verbally to the RC as soon as possible.
- D4.2 At the end of each sailing day:
- Rolling, bagging and placement of the sails as directed.
  - Leaving the boat in the same state of cleanliness as when first boarded that day, remove all rubbish and remove all tape marks.
  - Placing the boat covers back on and hosing down the boat at the end of each day.
- D4.3 Compliance with any regulations, including speed restrictions and navigation marks, while leaving or returning to the berth or mooring.
- D4.4 Infringements of items D4.1 and D4.2 will be considered as damage and the cost of rectification will be deducted from the damage deposit.
- D4.5 Wearing an approved buoyancy aid at all times while on-board the boats.

#### **D5 EQUIPMENT LIST**

- D5.1 Sails and equipment:
- Mainsail and battens
  - Jib and battens
  - Asymmetrical spinnaker
  - One set spinnaker sheets
  - One set jib sheets
  - Tiller extension
  - Safety equipment to meet Cat 7.