

BLAIRGOWRIE YACHT SQUADRON



International Contender Class Association

**2024 Musto Skiff Victorian Championships
2024 International Contender Victorian Championships
and
2024 International Finn Victorian Championships**

SAILING INSTRUCTIONS V2

20 – 21 April 2024

**Organising Authority
BLAIRGOWRIE YACHT SQUADRON
2900 Point Nepean Road, Blairgowrie 3942, Victoria**

The notation '[DP]' in a rule in the NOR and SI's means that the penalty for a breach of that rule may, at the discretion of the protest committee, be less than disqualification. This changes RRS 64.1.

The notation '[NP]' denotes that a breach of this rule will not be grounds for protest by boat. This changes RRS 62.1(a)

The notation '[SP]' denotes a rule for which a standard penalty will be applied by the race committee without a hearing. This changes RRS 63.1, Appendix A4 and Appendix A5.

1 RULES

1.1 The racing will be governed by:

- the rules as defined in the 2021-2024 Racing Rules of Sailing (RRS), and
- the rules of the class associations for the respective class of the International Contender class, the Musto class and the Finn class

1.2 The Australian Sailing Special Regulations Part 2, Off the Beach Boats, shall apply.

1.3 The Racing Rules of Sailing will be altered as follows:

(a) For the Musto class, Rule 41 Outside Help, by adding: "A boat may also receive outside help where the Race Committee deems that the vessel and its crew require assistance in order to right a capsized vessel and/or return its crew to the vessel in order to continue racing".

1.4 Spot checks may be conducted during the event to verify compliance with these rules and regulations.

1.5 If there is conflict in or between rules or regulations (other than RRS), in the Notice of Race or Sailing Instructions, the Sailing Instructions shall take precedence. This changes RRS 63.7.

2 NOTICES TO COMPETITORS

2.1 The Official Notice Board is located online on the [regatta page of the BYS website](#).

3 CHANGES TO SAILING INSTRUCTIONS

3.1 Any change to the Sailing Instructions will be posted on the Official Notice Board not less than one hour before the race or races affected, except that any change to the schedule of races will be posted by 1900hrs on the day before it will take effect.

4 SIGNALS MADE ASHORE

4.1 Signals made ashore will be displayed above the class flag flown from one of the eastern halyards of the BYS Yardarm in front of the clubhouse.

4.2 When flag AP is displayed ashore, '1 minute' is replaced with 'not less than 30 minutes' in the race signal AP. This changes Race Signals AP.

5 SCHEDULE OF EVENTS and RACES

5.1 Schedule

| Date | Event | Time |
|----------------------|-------------------------------|---------------------|
| Saturday 20 Apr 2024 | Registration | 0930-1030 hrs. |
| Saturday 20 Apr 2024 | Competitors Briefing | 1030 hrs. |
| Saturday 20 Apr 2024 | Race Session #1 | Not before 1230 hrs |
| Sunday 21 Apr 2024 | Race Session #2 | Not before 1000 hrs |
| Sunday 21 Apr 2024 | Drinks and prize presentation | ASAP After racing |

5.2 On the last scheduled day of racing, no warning signal will be made after 1600 hours.

6 CLASS FLAG

- 6.1 The class flag for each class will be:
Musto Skiff: Musto class flag
Contender: Contender class flag
Finn: Finn class flag

7 RACING AREA

- 7.1 Attachment A shows the Race Area to the north of BYS.

8 THE COURSES

- 8.1 The diagrams and associated notes in Attachment B show the courses and marks, the order in which marks are to be passed, and the side on which each mark is to be left.
- 8.2 No later than the warning signal, the race committee vessel will indicate the course to be sailed by displaying the corresponding numeral pennant and may display the approximate magnetic compass bearing from the starting line to the top mark.
- 8.3 In the event that one of either mark 5S or 5P is not in place, boats shall round the single mark 5 to port.
- 8.4 Marks 1, 2, 3 and 4 are to be rounded to port.

9 MARKS

- 9.1 The pin end of the start line will be a green inflatable cylindrical mark.
- 9.2 The finish mark on the starboard side of the committee boat will be a black and white inflatable cylindrical mark.
- 9.3 Marks 1, 3, 5S and 5P will be orange inflatable conical marks.
- 9.4 Mark 2 and 4 will be yellow inflatable conical marks.

10 THE START

- 10.1 To alert boats that a race starting sequence will begin soon, an orange flag will be flown from the race committee vessel with one sound signal at least five minutes before a warning signal is made.
- 10.2 The starting line will be between a staff displaying an orange flag on the race committee vessel at the starboard end and the course side of the port end starting mark.
- 10.3 [DP] Boats whose warning signal has not been made shall avoid the starting area during the starting sequence for other classes. The starting area is defined as a rectangle 50 meters from the starting line and marks in all directions.
- 10.4 A boat that does not start within 4 minutes after her starting signal will be scored Did Not Start without a hearing. This changes RRS A4 and A5.

11 CHANGE TO THE NEXT LEG OF THE COURSE

- 11.1 The race officer may change the position of the next mark in accordance with RRS 33, subject to the amendments detailed in this clause.
- 11.2 When the next leg of the course is changed, the race committee shall move the existing mark(s).

12 THE FINISH

- 12.1 A blue flag flown from the race committee vessel will indicate the finishing vessel is on station for the finish.
- 12.2 The finishing line will be between a staff displaying a blue flag on the race committee vessel and the course side of a black and white chequered inflatable cylindrical mark positioned on the starboard side of the committee boat.

13 PENALTY SYSTEM

- 13.1 RRS 44.1 and RRS 44.2 are changed so that the two turns penalty is replaced by the one turn penalty (one tack and one gybe in the same direction).
- 13.2 For the Musto class, Rule 44.2, One-Turn and Two-Turn Penalties, is changed by adding: "Where a penalty applies while the head of the spinnaker is above the main-boom gooseneck, the penalty may be taken immediately after the next time the head of the spinnaker is lowered below the main-boom gooseneck, but shall be taken prior to rounding the next mark or crossing the finishing line".

14 TIME LIMITS AND TARGET TIMES

- 14.1 Time limits and target times are as follows:

| Class | Race Target Time | Race Time Limit | Finishing window |
|--------------|-------------------------|------------------------|-------------------------|
| Musto | 30 minutes | 60 minutes | 15 minutes |
| Contender | 40 minutes | 70 minutes | 15 minutes |
| Finn | 40 minutes | 70 minutes | 15 minutes |

- 14.2 There are no time limits for reaching the first mark.
- 14.3 A boat that fails to finish within the Time Limit may be scored DNF. This changes RRS 35.
- 14.4 Closure of the finish window will be 15 mins after the first boat sails the course and finishes, or after the last boat has finished (whichever is sooner). On closure of the finish window, all boats not yet finished are to return to the starting area for the next race if one is scheduled.
- 14.5 Failure to meet the target time will not be grounds for redress. This changes rule RRS 62.1(a).
- 14.6 At the race officer's discretion, boats that are still racing at the closure of their finish window may be given an allocated place based on their position in the fleet at the time. This changes rules RRS 35, A4 and A5.

15 PROTESTS AND REQUESTS FOR REDRESS

- 15.1 Protest forms are available at the regatta office. Protests and requests for redress or reopening a hearing shall be delivered there within the appropriate time limit.
- 15.2 The protest time limit is 60 minutes after the last boat has finished the last race of the day or the race committee signals no more racing today, whichever is later.
- 15.3 Notices shall be posted no later than 30 minutes after the protest time limit to inform competitors of hearings in which they are parties or named as witnesses.
- 15.4 Hearings will be held in the protest room, located in the Commodores Lounge on the upper level of the BYS clubhouse, and will commence at the time posted.

16 ARBITRATION & POST RACE PENALTY

- 16.1 Appendix T shall apply.

17 SCORING

- 17.1 Six (6) championship races are scheduled, of which three (3) races are required to be completed to constitute a series.
- 17.2 When less than five (5) races have been completed, a boat's series score will be the total of her race scores.
- 17.3 When five (5) or more races have been completed, a boat's series score will be the total of her race scores excluding her worst score.
This changes RRS Appendix A2.

18 SAFETY REGULATIONS

- 18.1 [DP] All boats intending to race must sign on and sign off each day by filling out the sign on/off sheet located in the Junior Lounge.
- 18.2 The sign on period will close at the warning signal being displayed the first race for that session on that day.
- 18.3 The sign off period will close 60 minutes after the last boat has completed the last race of the session.
- 18.4 Failure to Sign On in accordance with Sl.18.1 shall be a twenty percent (20%) scoring penalty calculated pursuant to RRS 44.3 (c) unless the Jury decides differently, applied without a hearing to a boat's first valid race of the day. This change is added to RRS A5.1.
- 18.5 Failure to Sign Off in accordance with Sl.18.5 shall be a twenty percent (20%) scoring penalty calculated pursuant to RRS 44.3 (c) unless the Jury decides differently, applied without a hearing to a boat's first valid race of the day. This change is added to RRS A5.1.

19 [DP] REPLACEMENT OF EQUIPMENT

- 19.1 Substitution of damaged or lost equipment will not be allowed unless authorised by the race committee. Requests for equipment substitution shall be made in writing to the race officer at the first reasonable opportunity.

20 SUPPORT BOATS

- 20.1 Coaches and support boats must remain at least 100m outside the start area, the course and all racing areas from the time of the first warning signal each day until racing has concluded for that day.
- 20.2 Competitors shall have no communication with, and boats shall not be tied to coach or support boats from the first warning signal each race day until racing has been concluded for the day.
- 20.3 If called upon by the race officer, support boats must assist in an emergency as directed, and must maintain a watch on VHF Channel 71.

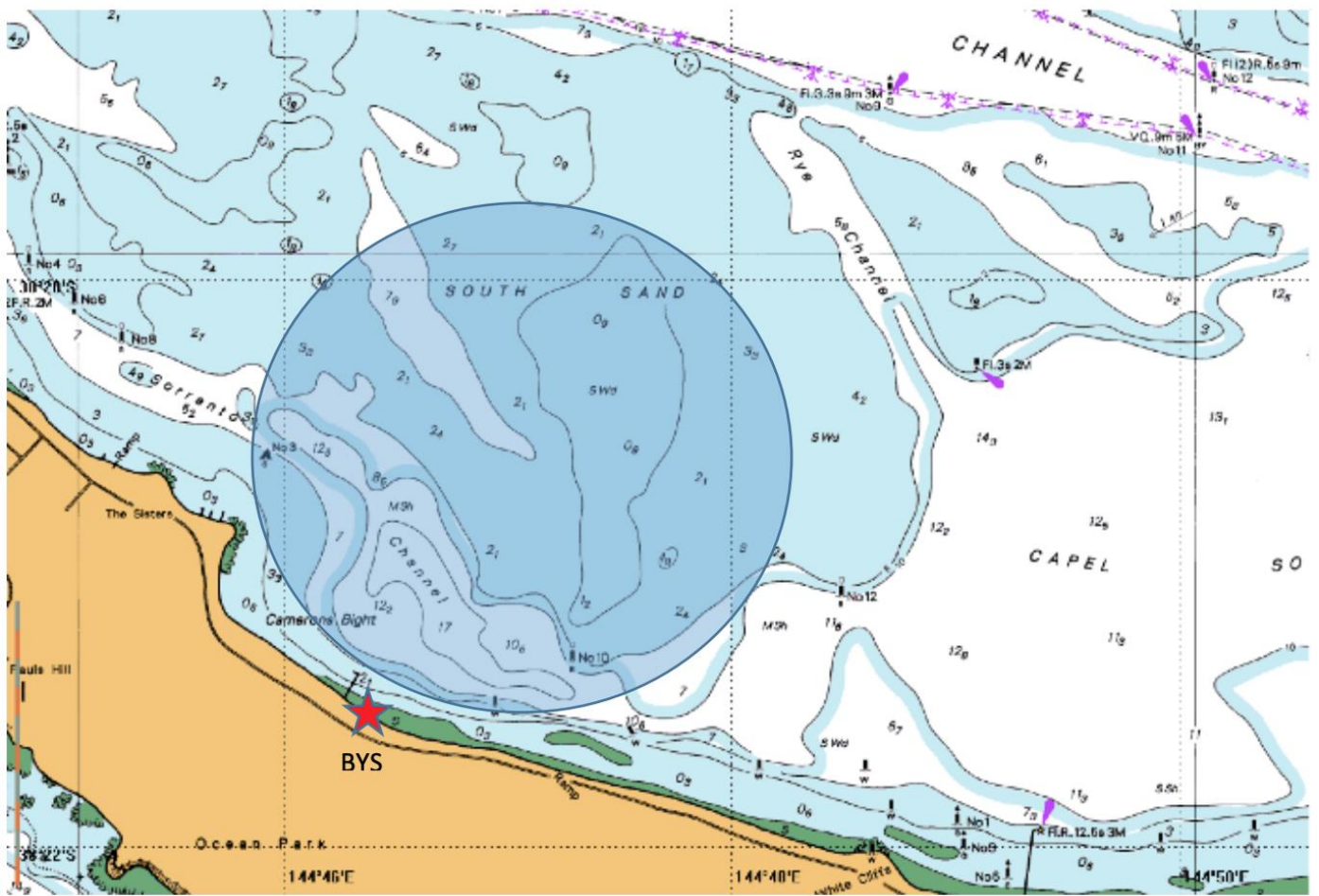
21 TRASH DISPOSAL

- 21.1 Trash may be placed aboard support or official boats.

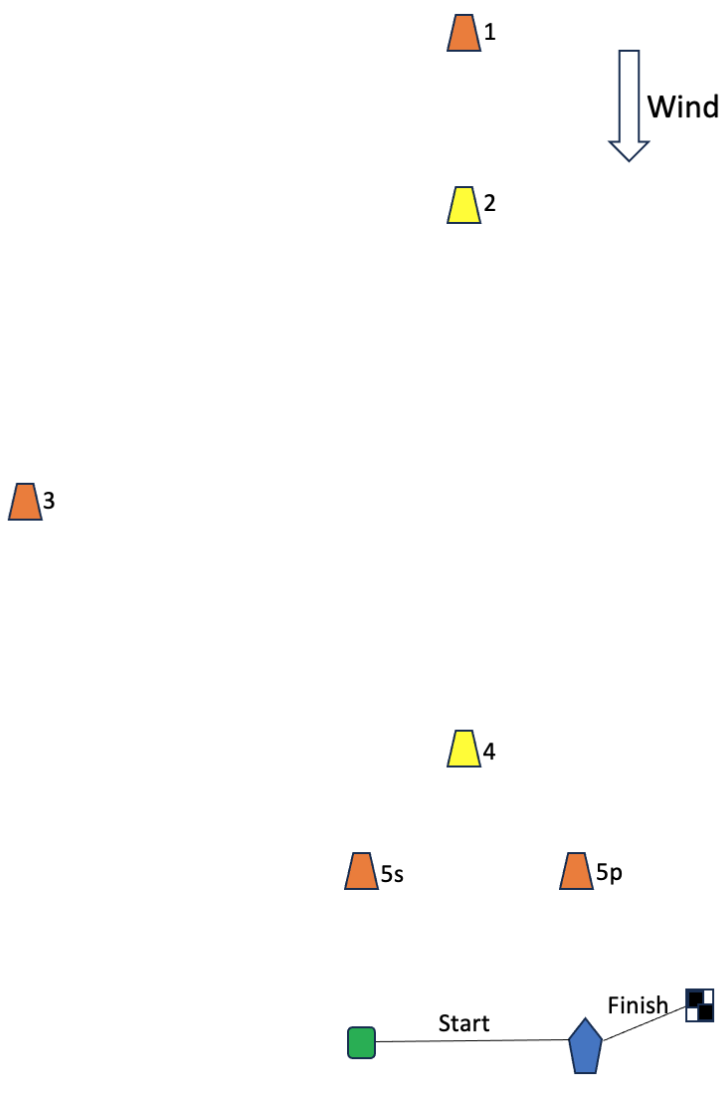
22 DISCLAIMER OF LIABILITY

- 22.1 Competitors participate in the regatta entirely at their own risk. See RRS 3, Decision to Race. The organizing authority will not accept any liability for material damage or personal injury or death sustained in conjunction with or prior to, during, or after the regatta.







Attachment A – Racing Area



Attachment B- Courses



Course Descriptions

| Class | Course Number | Flag | Course |
|-----------|---------------|---|---|
| Musto | 2 |  | 1, 5s/5p, 1, 5p, FINISH |
| Musto | 3 |  | 1, 5s/5p, 1, 5s/5p, 1, 5p, FINISH |
| Contender | 2 |  | 2, 3, 4, 2, 4, FINISH |
| Contender | 3 |  | 2, 3, 4, 2, 4, 2, 3, 4 (passing mark), FINISH |
| Finn | 2 |  | 2, 5s/5p, 2, 5p, FINISH |
| Finn | 3 |  | 2, 5s/5p, 2, 5s/5p, 2, 5p, FINISH |