



J/70 Victorian Championship 21 - 23 November 2025

SAILING INSTRUCTIONS (SIs)

The Organizing Authority (OA) is the Blairgowrie Yacht Squadron in conjunction with the J/70 Australia Class Association Inc (J70ACA).

The notation '[DP]' in a rule in the Sailing Instructions means that the penalty for a breach of that rule may, at the discretion of the protest committee, be less than disqualification.

The notation '[NP]' denotes that a breach of this rule will not be grounds for protest by boat. This changes RRS 60.1

1 RULES

- 1.1 The racing will be governed by:
 - the rules as defined in the 2025-2028 Racing Rules of Sailing (RRS), and
 - the Special Regulations of Australian Sailing (AS), and
 - the International J70 Class Association (IJ70CA) Class Rules (J70CR) including Part III, Sections I.3 (Outside Assistance), and I.4 (Corinthian Division). [DP]
- 1.2 In accordance with the J70 Class Rules and World Sailing Regulation 20.5.1, no advertising shall be displayed pursuant to World Sailing Regulation 20.3.2.
- 1.3 Spot checks may be conducted during the event to verify compliance with these rules and regulations.
- 1.4 If there is conflict in or between rules or regulations (other than RRS), in the Notice of Race or Sailing Instructions, the Sailing Instructions shall take precedence.
- 1.5 The prescriptions and special regulations of Australian Sailing Part 1 Category 7 will apply. All boats shall have a current, valid, completed Australian Sailing (AS) Special Regulations Category 7 Equipment Audit Form completed by the boat's Person in Charge. A template is available at: www.sailingresources.org.au/safety/equipment
- 1.6 A National Jury has been appointed and decisions of the jury will be final as provided in RRS 70.3.
- 1.7 RRS 40.1 applies to all competitors while **afloat**. This changes the preamble to RRS Part 4.

2 NOTICES TO COMPETITORS

- 2.1 The Official Notice Board is located online at <https://sailingresults.net/sa/notice/?ID=82180> and can be accessed via the regatta page of the BYS website www.bys.asn.au/j-70-victorian-championship-2025-26/

3 CHANGES TO SAILING INSTRUCTIONS

- 3.1 Any change to the Sailing Instructions will be posted on the Official Notice Board at least 2 hours before the scheduled time for the first race on the day it will take effect and signaled in accordance with RRS Race Signals, except that any change to the schedule of races will be posted by 1900hrs on the day before it will take effect.

4 SIGNALS MADE ASHORE

- 4.1 Signals made ashore will be displayed over the class flag flown from one of the eastern halyards of the BYS Yardarm in front of the clubhouse.
- 4.2 When flag AP is displayed ashore, '1 minute' is replaced with 'not less than 30 minutes' in the race signal AP. This changes Race Signals AP.

5 SCHEDULE OF EVENTS and RACES

5.1 Event Schedule

Date	Time	Event
Thur 20 Nov 25	0900 - 1600	Hardstand open, berthing available
	1500 - 1700	Registration check-in
Fri 21 Nov 25	0800 - 0900	Registration check-in
	0900	Competitors briefing
	1100	Race session, first warning signal – 3 races scheduled
		Post racing drinks and snacks
Sat 22 Nov 25	1100	Race session, first warning signal – 3 races scheduled
		Post racing drinks and snacks
Sun 23 Nov 25	1000	Race session, first warning signal – 2 races scheduled
	TBA – as early as possible	Post racing drinks and snacks Presentation of awards, after racing

- 5.2 Eight (8) championship heats are scheduled for the series, with up to four (4) heats each day.
- 5.3 On the last scheduled day of racing, no warning signal will be made after 1400 hours.

6 CLASS FLAG

- 6.1 The class flag will be a white flag with the J70 class logo.

7 RACING AREA

- 7.1 Attachment A shows the race area: Club front area to Capel Sound, approximately 3nm to the east of Blairgowrie Yacht Squadron.

8 THE COURSES

- 8.1 The diagrams and associated notes in Attachment B show the courses and marks, the order in which marks are to be passed, and the side on which each mark is to be left.
- 8.2 No later than the warning signal, the Race Committee Vessel will indicate the course to be sailed by displaying the corresponding numeral pennant and the approximate magnetic compass bearing from the starting line to Mark 1.
- 8.3 In the event that one of either mark 2s or 2p is not in place, boats shall round the single mark 2 to port.

9 MARKS

- 9.1 The pin end of the start line will be a pink cylindrical mark.
- 9.2 The pin end of the finish line will be a black and white checkered inflatable cylindrical mark.
- 9.3 Marks 1, 2S and 2P will be orange inflatable conical marks.
- 9.4 Mark 1a will be a yellow inflatable conical mark.
- 9.5 Replacement or relocated mark as provided for in SI 11 will be a pink inflatable conical mark.

10 THE START

- 10.1 The starting line will be between a staff displaying an orange flag on the race committee vessel at

the starboard end and the course side of the starting mark at the port end.

- 10.2 To alert boats that a race starting sequence will begin soon, an orange flag will be flown from the Race Committee Vessel with one sound signal at least five minutes before a warning signal is displayed.
- 10.3 The Vakaros RaceSense system will be used by the Race Committee and the relevant information will be available to all boats. A set of instructions about the use of the electronic device will be posted on the Official Notice Board.
- 10.4 RRS 26 is changed. The countdown to the start on the Atlas 2 from RaceSense will be the official time. Signal flags will only be used for information purposes.
- 10.5 The visual identification of boats infringing RRS 29 and RRS 30 by the Race Committee is replaced with the electronic identification by the Vakaros RaceSense system. This changes RRS 29.1, 30.1, 30.2, 30.3 and 30.4.
- 10.6 [DP] [NP] Each boat shall provide and have a working Vakros Atlas 2 configured for RaceSense at registration check-in, which shall be mounted on the aft side of the mast at all times while racing.
- 10.7 [NP] Any alleged failure of the Atlas 2, RaceSense system, or communication systems will not constitute grounds to request redress by a boat or the Protest Committee. This changes RRS 61.1(a), 61.1(c).
- 10.8 If the Race Committee Vessel displays Code Flag G (Golf) flag with one sound before the warning signal, SIs from 10.3 to 10.7 will not apply.
- 10.9 If the Race Committee Vessel displays Code Flag R (Romeo) with a long sound signal before the warning signal of a race, competitors shall restart their Vakaros Atlas 2 unit by switching it off, waiting 10 seconds and then switching it back on to reconnect to the RaceSense network. Code Flag R will remain displayed for a minimum of 2 minutes and will be removed with the next warning signal.
- 10.10 In addition to RRS 29.1, 30.3 and 30.4, if code Flag G is displayed as per SI 10.8, individual recalls may be broadcast on the VHF Channel using bow numbers as a courtesy. Failure to broadcast or receive a recalled bow number shall not be grounds for redress. This changes RRS 61.4(b) (1).
- 10.11 A boat that does not start within five (5) minutes after her starting signal will be scored Did Not Start without a hearing. This changes RRS A5.1 and A5.2.

11 CHANGE TO THE NEXT LEG OF THE COURSE

- 11.1 The Race Committee may change the position of the next mark in accordance with RRS 33, subject to the amendments detailed in this clause.
- 11.2 In the event that the position of Mark 1 is changed, Marks 1 and 1a may be replaced by a new single Mark 1 and boats will round the new Mark 1 and proceed directly to Marks 2S/2P or the finishing line, as appropriate.

12 THE FINISH

- 12.1 The finishing line will be between a staff displaying a blue flag on the Race Committee Vessel and the course side of a black and white checkered inflatable cylindrical mark.
- 12.2 For course 1 (downwind finish) the Race Committee Vessel will be on the port end of the line when viewed from Marks 1 and 1a.
- 12.3 For course 2 (upwind finish) the Race Committee Vessel will be on the starboard end of the line when viewed from Marks 2S/2P.

13 PENALTY SYSTEM

- 13.1 The penalty for breaking a rule of Part 2 or RRS 31 shall be a One Turn Penalty. This changes RRS 44.1 and 44.2.

- 13.2 [DP] A boat that has taken a penalty or retired under RRS 31 or 44.1 shall make a declaration via the online noticeboard facility within the protest time limit.

14 TIME LIMITS AND TARGET TIMES

- 14.1 Time limits and target times are as follows:

Race Time Limit	Finish Window	Race Target Time
75 minutes	20 minutes	45-50 minutes

- 14.2 Boats still racing that fail to finish within the time stated as the Finish Window, after the first boat sails the course and finishes will be scored Time Limit Expired (TLE) without a hearing unless they subsequently retire, are penalized, or are given redress. The score for TLE will be the number of finishers plus two points, but not worse than DNF. This changes RRS 35, and is added to A4, A5 and A10.
- 14.3 Failure to meet the target time will not be grounds for redress under RRS 61.4(b)(1).

15 PROTESTS AND REQUESTS FOR REDRESS

- 15.1 Protest forms are available at the Regatta Office or via the online noticeboard facility.
- 15.2 The protest time limit is 60 minutes after the last boat has finished the last race of the day or the race committee signals no more racing today, whichever is later.
- 15.3 Protest notices shall be posted on the Official Notice Board no later than 30 minutes after the protest time limit to inform competitors where and when there is a hearing in which they are parties to a protest.
- 15.4 Notices of protests by the Race Committee or Protest Committee will be posted to inform boats under rule RRS 60.2.
- 15.5 [DP] Breaches of Sailing Instruction 19, 20 or 23 will not be grounds for a protest by a boat. This changes RRS 60.1.

16 SAFETY REGULATIONS

- 16.1 The sign on/sign off facility shall be via the online regatta system. Skippers will receive a unique sign-on/off link at the regatta registration.
- 16.2 All boats shall SIGN ON and include all crew member details 30 minutes or more before the first scheduled warning signal each day.
- 16.3 All boats shall SIGN OFF at the earliest possible time after completion of the race session, but not later than the end of the protest time limit. A boat which retires or does not intend to continue racing is required to sign off immediately on return to the shore. Boats should advise the Race Committee by VHF if returning to shore from the race area.
- 16.4 Boats failing to sign on in accordance with SI 16.2 shall be scored with a twenty percent (20%) scoring penalty calculated pursuant to RRS 44.3(c), applied without a hearing to a boat's first valid race of the day. This change is added to RRS A5.1.
- 16.5 Boats failing to sign off in accordance with SI 16.3 shall be a twenty percent (20%) scoring penalty calculated pursuant to RRS 44.3(c), applied without a hearing to a boat's last valid race of the day. This change is added to RRS A5.1.
- 16.6 The sign on period will close 30 minutes prior to the scheduled warning signal time of the first race for that session on that day.
- 16.7 The sign off period will close at the close of Protest Time Limit after the last boat has completed the last race of the session.
- 16.8 [NP] No races shall be started or continued if the average wind (measured over the previous 10 mins) is less than 5 knots or more than 25 knots.

17 BOW NUMBERS

- 17.1 Bow numbers will be supplied by the OA in accordance with the J70ER 6 and J70ER Appendix A

as shown in Attachment C.

- 17.2 Bow numbers shall be displayed from the close of check in through the end of the event. It is the responsibility of the competitor to ensure that the bow numbers remain on the boat and obtain replacements as necessary.

18 [DP] REPLACEMENT OF CREW OR EQUIPMENT

- 18.1 Substitution of competitors is not allowed without written approval of the Race Committee prior to racing on that day. Requests for equipment or crew substitution shall be made via the online noticeboard facility at the first reasonable opportunity.
- 18.2 Repair, alternation, replacement, or substitution of damaged or lost equipment will not be allowed unless authorised by the Race Committee pursuant to J70ER 10. Request shall be made via the online noticeboard facility, or if on water by hailing on the VHF Channel.

19 EQUIPMENT AND MEASUREMENT CHECKS

- 19.1 [DP] Pursuant to J70ER 4, a boat, sails, or equipment may be inspected at any time for compliance with the Event Equipment Rules (see J70 ER 2), IJ70CA Class Rules (J70CR), the Notice of Race and these Sailing Instructions. On the water, when instructed by a member of the Race Committee, a boat shall proceed immediately to a designated area for inspection

20 OFFICIAL VESSELS

- 20.1 The Race Committee vessel will be identified by the BYS burgee.

21 [DP] SUPPORT BOATS

- 21.1 Coaches and support boats must remain at least 100m outside the start area, the course and all racing areas from the time of the first warning signal each day until racing has concluded for that day.
- 21.2 Competitors shall have no communication with, and boats shall not be tied to coach or support boats from the first warning signal each race day until racing has been concluded for the day.
- 21.3 If called upon by the Race Committee, support boats must assist in an emergency as directed, and must maintain a watch on VHF channel 69 pursuant to RRS 37.

22 [DP] HAUL-OUT RESTRICTIONS

- 22.1 Boats may only be hauled out during the regatta with prior written approval from the Race Committee, or in the event of an emergency.

23 OFFICIAL BOATS

- 23.1 [NP] Official boats will be marked with a BYS Burgee.

24 TRASH DISPOSAL

- 24.1 Trash may be placed aboard support or official boats.

25 [DP] RADIO COMMUNICATION

- 25.1 All boats shall carry a marine band VHF transceiver capable of receiving and transmitting Marine VHF channels. Boats may use the radio to request assistance in an emergency. No other transmissions of any other nature are permitted by competing boats during each racing day from the first warning signal until racing has been concluded for the day.
- 25.2 The race committee may use VHF radio to advise competitors of general matters relating to racing, for individual and general recalls, or for emergency or safety purposes.
- 25.3 The use of mobile phones or any device capable of sending and/or receiving external electronic communication and/or connecting to the internet is prohibited after the first warning signal on each race day until the boat has finished racing, except as provided in clause 25.1 or in an emergency

threatening the safety of a crew member or the flotation of the boat.

25.4 The radio frequency for this regatta will be VHF channel 69.

25.5 The BYS tower call sign is "Blairgowrie".

25.6 The Race Committee Vessel call sign is "J70 Start".

26 TROPHIES and PRIZES

26.1 Prizes will be awarded for the first three overall places, the first three Corinthian places, and the first Young Crew (all crew aged 30 or under on the last day of the regatta).

26.2 Other prizes may be awarded at the discretion of the J70 Class Association.

27 RISK STATEMENT

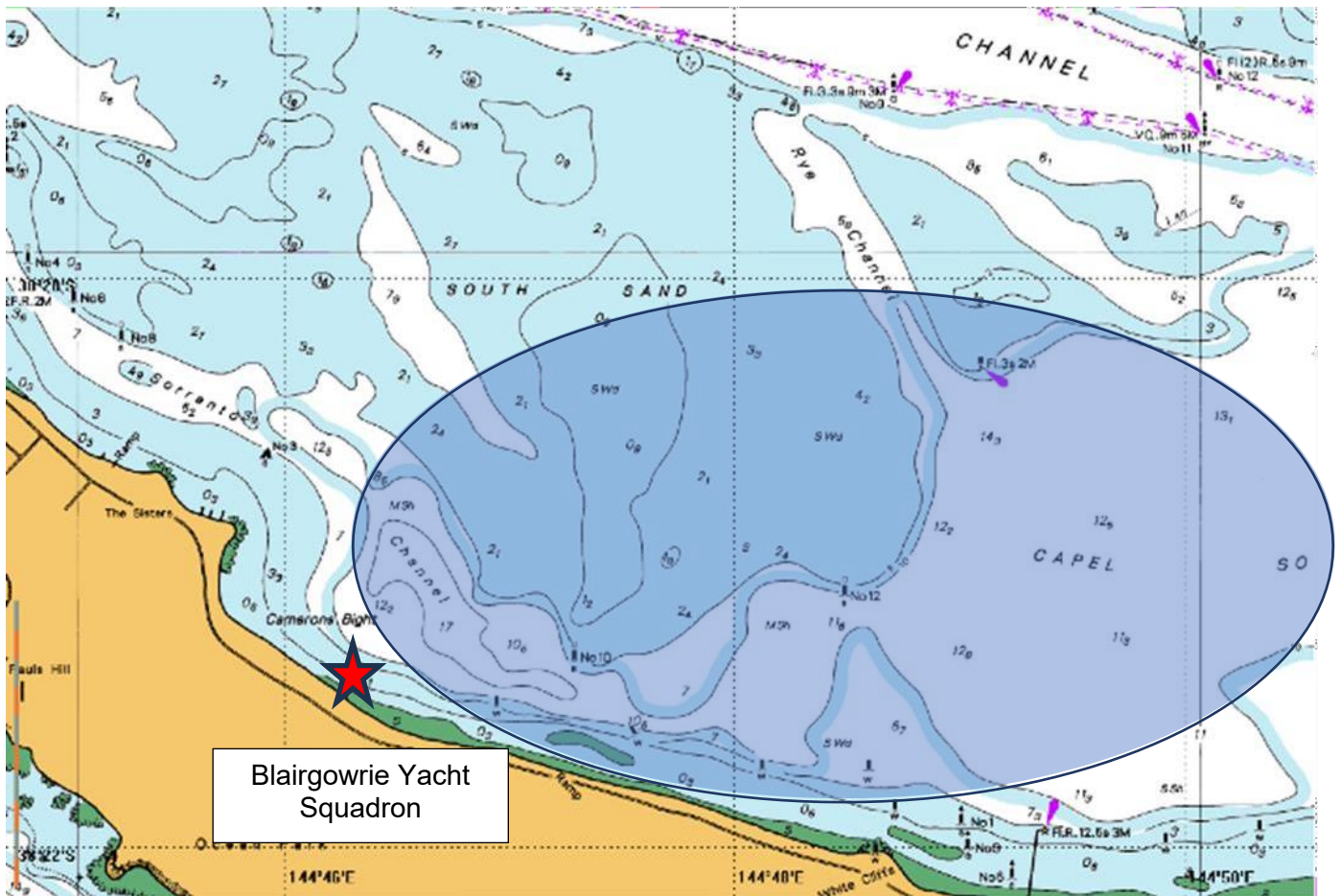
27.1 RRS 3 states: "The responsibility for a boat's decision to participate in a race or to continue to race is hers alone." By participating in this event each competitor agrees and acknowledges that sailing is a potentially dangerous activity with inherent risks. These risks include strong winds and rough seas, sudden changes in weather, failure of equipment, boat handling errors, poor seamanship by other boats, loss of balance on an unstable platform and fatigue resulting in increased risk of injury. **Inherent in the sport of sailing is the risk of permanent, catastrophic injury or death by drowning, trauma, hypothermia or other causes.**

27.2 All those taking part in these races are reminded of their obligations as set out in the Australian Sailing Special Regulations clause 1.02 'Responsibility of the Person in Charge'. The safety of a boat and its crew is the sole and inescapable responsibility of the person in charge who shall do their best to ensure that the boat is fully found, thoroughly seaworthy and manned by an experienced crew who have undergone appropriate training and are physically fit to face bad weather. They must be satisfied as to the soundness of hull, spares, rigging, sails and all gear. They shall ensure that all safety equipment is properly maintained and stowed and that the crew know where it is kept and how it is to be used. They shall also nominate a person to take over the responsibilities of the person in charge in the event of his incapacitation.

28 INSURANCE

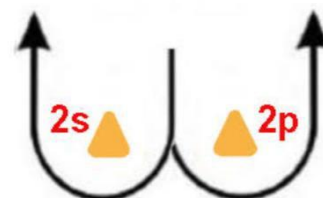
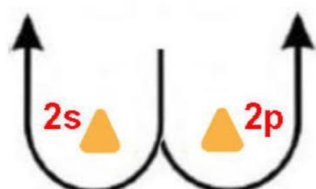
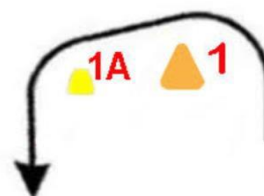
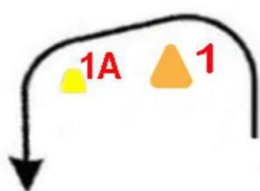
28.1 Each participating boat shall be insured with valid third-party property liability insurance and third-party personal liability insurance with a minimum cover of \$10,000,000.00 per incident or the equivalent, with cover being maintained for the duration of the regatta. All owners or competitors who sign the entry forms are deemed to have made a declaration that they hold such cover. Owners or competitors not holding this cover shall withdraw their entry.

Attachment A – RACING AREA

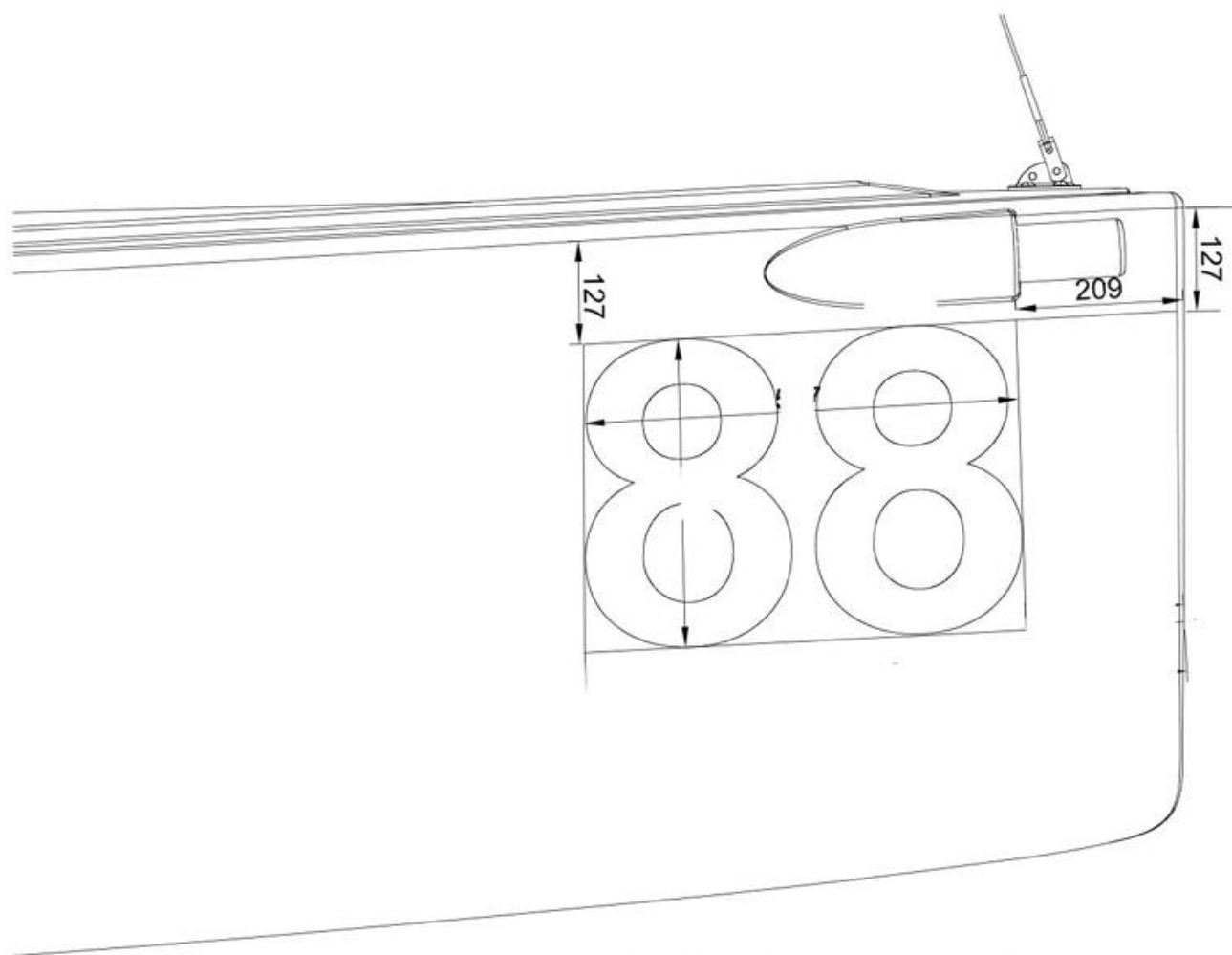


Attachment B - COURSES

Course	Description
Course 1	Windward/leeward with downwind finish Start – 1 – 1a – 2s/2p – 1 – 1a - Finish
Course 2	Windward/leeward with upwind finish Start – 1 – 1a – 2s/2p – 1 – 1a – 2s/2p - Finish



Attachment C – BOW NUMBERS



J/70 Class Bow Number Location