

**BLAIRGOWRIE YACHT SQUADRON**



**2024 J70 Victorian Championships**

**SAILING INSTRUCTIONS**

**17 Nov – 19 Nov 2023**

**Organising Authority  
BLAIRGOWRIE YACHT SQUADRON  
2900 Point Nepean Road, Blairgowrie 3942, Victoria**

**In conjunction with the:  
J70 Australia Class Association**

The notation '[DP]' in a rule in the NOR and SI's means that the penalty for a breach of that rule may, at the discretion of the protest committee, be less than disqualification. This changes RRS 64.1.

The notation '[NP]' denotes that a breach of this rule will not be grounds for protest by boat. This changes RRS 62.1(a)

The notation '[SP]' denotes a rule for which a standard penalty will be applied by the race committee without a hearing. This changes RRS 63.1, Appendix A4 and Appendix A5.

## 1 RULES

1.1 The racing will be governed by:

- the rules as defined in the 2021-2024 Racing Rules of Sailing (RRS), and
- the Special Regulations of Australian Sailing (AS), and
- the rules of the International J70 one design class.

1.2 In accordance with the J70 Class Rules and World Sailing Regulation 20.5.1, no advertising shall be displayed pursuant to World Sailing Regulation 20.3.2.

1.3 Spot checks may be conducted during the event to verify compliance with these rules and regulations.

1.4 If there is conflict in or between rules or regulations (other than RRS), in the Notice of Race or Sailing Instructions, the Sailing Instructions shall take precedence. This changes RRS 63.7.

1.5 The prescriptions and special regulations of Australian Sailing Part 1 Category 7 will apply. All boats shall have a current, valid, completed Australian Sailing (AS) Special Regulations Category 7 Equipment Audit Form completed by the boat's Person in Charge. A template is available at: <https://www.sailingresources.org.au/safety/equipment-auditing/>

1.6 Blairgowrie Safe Boat Harbour Rules apply for the period of the regatta, and are available at <https://www.bys.asn.au/marina/marina-rules/>.

## 2 NOTICES TO COMPETITORS

2.1 The Official Notice Board is located online on the regatta page of the BYS website. <https://bys.asn.au/2023-j-70-victorian-championship/>

## 3 CHANGES TO SAILING INSTRUCTIONS

3.1 Any change to the Sailing Instructions will be posted on the Official Notice Board at least 2 hours before the scheduled time for the first race on the day it will take effect and signaled in accordance with RRS Race Signals, except that any change to the schedule of races will be posted by 1900hrs on the day before it will take effect.

## 4 SIGNALS MADE ASHORE

4.1 Signals made ashore will be displayed above the class flag flown from one of the eastern halyards of the BYS Yardarm in front of the clubhouse.

4.2 When flag AP is displayed ashore, '1 minute' is replaced with 'not less than 30 minutes' in the race signal AP. This changes Race Signals AP.

## 5 SCHEDULE OF EVENTS and RACES

5.1 Schedule

Date	Event	Venue	Time
Friday 17 Nov 2023	Registration	Deck	From 0800 hrs.
Friday 17 Nov 2023	Competitors Information Session	Beneath deck	0900 hrs.

Sunday 19 Nov 2023	Drinks and prize presentation	Deck	After racing
--------------------	-------------------------------	------	--------------

**\*Note:** Events scheduled for the Deck area may be relocated under cover in the event of poor weather.

## 5.2 Racing schedule

Date	Racing Session	Races scheduled	First Warning Signal
Friday 17 Nov 2023	1	Sailing session 1	1100 hrs.
Saturday 18 Nov 2023	2	Sailing session 2	1100 hrs.
Sunday 19 Nov 2023	3	Sailing session 3	1000 hrs.

- 5.3 Ten (10) championship heats are scheduled for the series, with up to four (4) heats each day.
- 5.4 Additional heats may be sailed each day, provided that racing does not become more than one race ahead of schedule and the change is made according to these Sailing Instructions.
- 5.5 On the last scheduled day of racing, no warning signal will be made after 1400 hours.

## 6 CLASS FLAG

- 6.1 The class flag will be a white flag with the J70 class logo.

## 7 RACING AREA

- 7.1 Attachment A shows the primary (preferred) Race Area to the north-north east of BYS, and the alternative Race Area in Capel Sound, approximately 3nm to the east.
- 7.2 No later than 90 minutes before the scheduled start of the first race on each day, the race officer shall signify the Race Area for that day by displaying from the BYS yardarm the J70 Class Flag below one of the following flags:
- Code Flag A: Primary Course Area off BYS, or
  - Code Flag B: Alternative Course Area in Capel Sound

## 8 THE COURSES

- 8.1 The diagrams and associated notes in Attachment B show the courses and marks, the order in which marks are to be passed, and the side on which each mark is to be left.
- 8.2 No later than the warning signal, the race committee vessel will indicate the course to be sailed by displaying the corresponding numeral pennant and the approximate magnetic compass bearing from the starting line to Mark 1.
- 8.3 In the event that one of either mark 2s or 2p is not in place, boats shall round the single mark 2 to port.

## 9 MARKS

- 9.1 The pin end of the start line will be a black and white chequered inflatable cylindrical mark.
- 9.2 The pin end of the finish line will be a green inflatable cylindrical mark.
- 9.3 Marks 1, 2S and 2P will be orange inflatable conical marks.
- 9.4 Mark 1a will be a yellow inflatable conical mark.
- 9.5 Replacement or relocated mark as provided for in SI 11 will be a pink inflatable conical mark.

## 10 THE START

- 10.1 Races will be started by using RRS 26 with the warning signal made five minutes before the starting signal.

- 10.2 The starting line will be between a staff displaying an orange flag on the race committee vessel at the starboard end and the course side of the port end starting mark.
- 10.3 To alert boats that a race starting sequence will begin soon, an orange flag will be flown from the race committee vessel with one sound signal at least five minutes before a warning signal is made.
- 10.4 A boat that does not start within 4 minutes after her starting signal will be scored Did Not Start without a hearing. This changes RRS A4 and A5.

**11 CHANGE TO THE NEXT LEG OF THE COURSE**

- 11.1 The race officer may change the position of the next mark in accordance with RRS 33, subject to the amendments detailed in this clause.
- 11.2 When the next leg of the course is changed, the race committee shall lay a new mark as described in SI 9.5 and remove the original mark(s) as soon as practicable. Boats will round the new Mark 1 and proceed directly to Marks 2S/2P or the finishing line, as appropriate.

**12 THE FINISH**

- 12.1 A blue flag flown from the race committee vessel will indicate the finishing vessel is on station for the finish.
- 12.2 The finishing line will be between a staff displaying a blue flag on the race committee vessel and the course side of a black and white chequered inflatable cylindrical mark.
- 12.3 For courses 1, 2 and 3 (downwind finish) the race committee vessel will be on the port end of the line when viewed from Marks 1 and 1a.
- 12.4 For courses 4, 5 and 6, the race committee vessel will be on the starboard end of the line when viewed from Marks 2S/2P.

**13 PENALTY SYSTEM**

- 13.1 The penalty for breaking a rule of Part 2 or rule 31 shall be a One Turn Penalty (one tack and one gybe in the same direction). This changes RRS 44.1 and 44.2.
- 13.2 A boat that has taken a penalty or retired under RRS 31 or 44.1 shall complete an acknowledgement form at the regatta office located on the upper level of the BYS clubhouse within the Protest Time Limit.

**14 TIME LIMITS AND TARGET TIMES**

14.1 Time limits and target times are as follows:

<b>Time Limit</b>	<b>Mark 1 Time</b>	<b>Race Target Time</b>	<b>Finishing window</b>
90 minutes	20 minutes	45 minutes	10 minutes

- 14.2 A boat that fails to finish within the Time Limit shall be scored DNF. This changes RRS 35.
- 14.3 The finish window will be 10 minutes. Closure of the finish window will be indicated by lowering of the blue flag on the finish boat at 10 mins after the first boat sails the course and finishes, or after the last boat has finished (whichever is sooner) accompanied by 1 sound signal. On closure of the finish window, all boats not yet finished are to return to the starting area for the next race if one is scheduled.
- 14.4 If no boat has rounded Mark 1 within 20 minutes of the start signal the race may be abandoned.
- 14.5 Failure to meet the target time will not be grounds for redress. This changes rule RRS 62.1(a).
- 14.6 At the race officer's discretion, boats that are still racing at the closure of their finish window (but within the Time Limit) may be given an allocated place based on their position in the fleet at the time. This changes rules RRS 35, A4 and A5.

## **15 PROTESTS AND REQUESTS FOR REDRESS**

- 15.1 Protest forms are available at the regatta office. Protests and requests for redress or reopening a hearing shall be delivered there within the appropriate time limit.
- 15.2 The protest time limit is 60 minutes after the last boat has finished the last race of the day or the race committee signals no more racing today, whichever is later.
- 15.3 Notices shall be posted no later than 30 minutes after the protest time limit to inform competitors of hearings in which they are parties or named as witnesses.
- 15.4 Hearings will be held in the protest room, located in the Commodores Lounge on the upper level of the BYS clubhouse, and will commence at the time posted.
- 15.5 Notices of protests by the race committee or protest committee will be posted to inform boats under rule 61.1(b)
- 15.6 [DP] Breaches of Sailing Instructions 19 will not be grounds for a protest by a boat. This changes rule 60.1(a).
- 15.7 On the last scheduled day of racing a request for reopening a hearing shall be delivered:
  - (a) within the protest time limit if the requesting party was informed of the decision on the previous day;
  - (b) no later than 30 minutes after the requesting party was informed of the decision on that day.This changes rule RRS 66.
- 15.8 On the last scheduled day of racing a request for redress based on a protest committee decision shall be delivered no later than 30 minutes after the decision was posted. This changes rule RRS 62.2.

## **16 ARBITRATION & POST RACE PENALTY**

- 16.1 Appendix T shall apply.

## **17 SCORING**

- 17.1 Ten (10) championship races are scheduled, of which four (4) races are required to be completed to constitute a series.
- 17.2 When five (5) races have been completed, a boat's series score will be the total of her race scores.
- 17.3 When between six (6) and ten (10) races have been completed, a boat's series score will be the total of her race scores excluding her worst score.  
This changes RRS Appendix A2.

## **18 SAFETY REGULATIONS**

- 18.1 [DP] All boats intending to race must sign on each day by filling out the sign on sheet located in the Junior Lounge and include the names of all people on board for that race session.
- 18.2 On leaving the marina, all boats intending to race are also requested to radio Blairgowrie via VHF channel 71.
- 18.3 The sign on period will close 30 minutes prior to the scheduled warning signal time of the first race for that session on that day.
- 18.4 Signing on by radio or by hailing the race committee vessel is not a substitute for the sign on requirements set out in 18.1 above.
- 18.5 All boats are requested to sign off after each day's racing by radio to Blairgowrie (VHF channel 71) as soon as practicable upon returning to the marina.
- 18.6 A boat that retires from a race shall notify the race committee as soon as possible and sign off (as set out in 18.5 above) as soon as possible on returning to the marina.

- 18.7 The sign off period will close 60 minutes after the last boat has completed the last race of the session.
- 18.8 Failure to Sign On in accordance with SI.18.1 shall be a twenty percent (20%) scoring penalty calculated pursuant to RRS 44.3 (c) unless the Jury decides differently, applied without a hearing to a boat's first valid race of the day. This change is added to RRS A5.1.
- 18.9 Failure to Sign Off in accordance with SI.18.5 shall be a twenty percent (20%) scoring penalty calculated pursuant to RRS 44.3 (c) unless the Jury decides differently, applied without a hearing to a boat's first valid race of the day. This change is added to RRS A5.1.
- 18.10 No races shall be started or continued if the average wind (measured over the previous 15 mins) is less than 5 knots or more than 25 knots.

## **19 [DP] REPLACEMENT OF CREW OR EQUIPMENT**

- 19.1 Substitution of damaged or lost equipment will not be allowed unless authorised by the race committee. Requests for equipment or crew substitution shall be made in writing to the race officer at the first reasonable opportunity.

## **20 EQUIPMENT AND MEASUREMENT CHECKS**

- 20.1 Boats may be weighed and have their sails measured at any stage throughout the regatta and be inspected for outboard and safety equipment.

## **21 SUPPORT BOATS**

- 21.1 Coaches and support boats must remain at least 100m outside the start area, the course and all racing areas from the time of the first warning signal each day until racing has concluded for that day.
- 21.2 Competitors shall have no communication with, and boats shall not be tied to coach or support boats from the first warning signal each race day until racing has been concluded for the day.
- 21.3 If called upon by the race officer, support boats must assist in an emergency as directed, and must maintain a watch on VHF Channel 71.

## **22 HAUL-OUT RESTRICTIONS**

- 22.1 Boats may only be hauled out during the regatta with prior written approval from the Race Officer, or in the event of an emergency.

## **23 OFFICIAL BOATS**

- 23.1 Official boats will be marked with a BYS Burgee.

## **24 TRASH DISPOSAL**

- 24.1 Trash may be placed aboard support or official boats.

## **25 RADIO COMMUNICATION**

- 25.1 All boats shall carry a marine band VHF transceiver capable of receiving and transmitting Marine VHF channels. Boats shall use the radio as required under SI 18 (when leaving the marina; to sign off after racing, and to report retirement from racing) and may use the radio to request assistance in an emergency. No other transmissions of any other nature are permitted by competing boats during each racing day from the first warning signal until racing has been concluded for the day.
- 25.2 The race committee may use VHF radio to advise competitors of general matters relating to racing, for individual and general recalls, or for emergency or safety purposes.
- 25.3 The use of mobile phones or any device capable of sending and/or receiving external electronic communication and/or connecting to the internet is prohibited after the first warning signal on each

race day until the boat has finished racing, except as provided in clause 25.1 or in an emergency threatening the safety of a crew member or the flotation of the boat.

- 25.4 The radio frequency for this regatta will be VHF channel 71.
- 25.5 The BYS tower call sign is "Blairgowrie".
- 25.6 The race committee vessel call sign is "J70 Start".

## **26 TROPHIES and PRIZES**

- 26.1 Prizes based on the Scratch Point score shall be awarded for 1st, 2nd and 3rd.
- 26.2 Prizes based on the Corinthian Point score shall be awarded for 1st, 2nd and 3rd.
- 26.3 A prize based on the Handicap Point score shall be awarded for 1st.
- 26.4 Other prizes may be awarded at the discretion of the J70 Class Association.

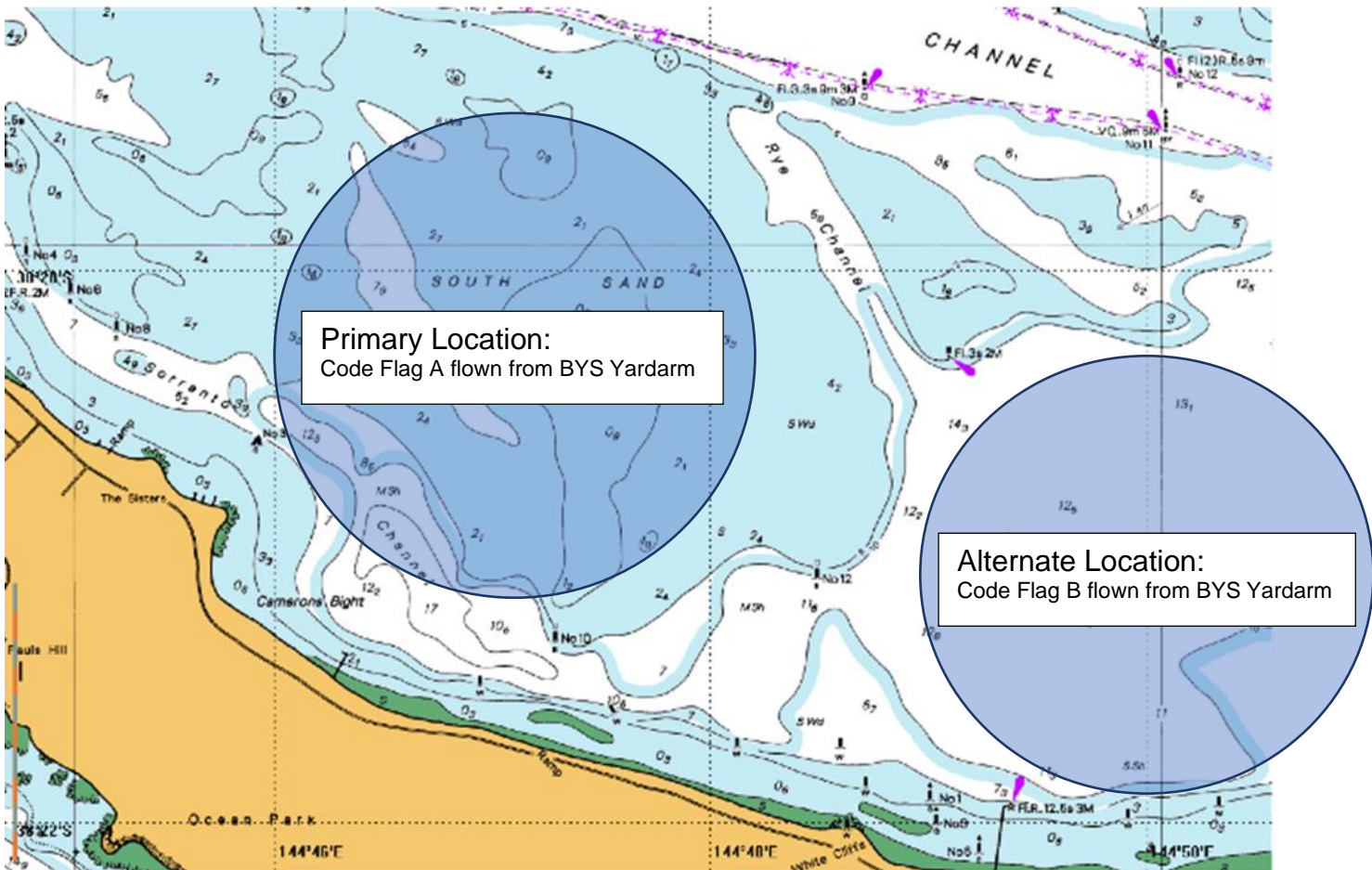
## **27 DISCLAIMER OF LIABILITY**

- 27.1 Competitors participate in the regatta entirely at their own risk. See RRS 3, Decision to Race. The organizing authority will not accept any liability for material damage or personal injury or death sustained in conjunction with or prior to, during, or after the regatta.

## **28 INSURANCE**

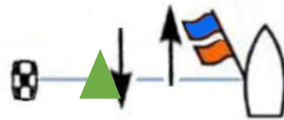
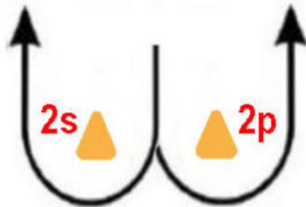
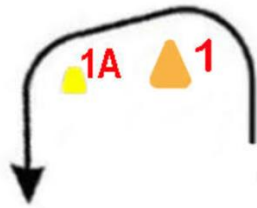
- 28.1 Each participating boat shall be insured with valid third-party property liability insurance and third-party personal liability insurance with a minimum cover of \$10,000,000.00 per incident or the equivalent, with cover being maintained for the duration of the regatta. All owners or competitors who sign the entry forms are deemed to have made a declaration that they hold such cover. Owners or competitors not holding this cover shall withdraw their entry.

# Attachment A – Racing Areas





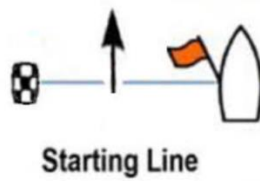
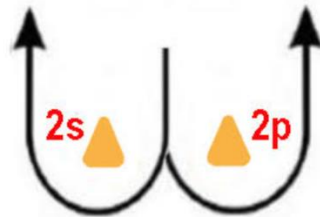
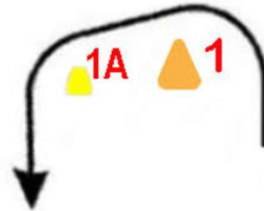
## Attachment B- Courses



Starting Line / Finishing Line

Course	Windward/leeward with downwind finish
1	Start – 1 – 1a – Finish
2	Start – 1 – 1a – 2s/2p – 1 – 1a - Finish
3	Start – 1 – 1a – 2s/2p – 1 – 1a – 2s/2p – 1 – 1a - Finish

## Attachment B – Courses



Course	Windward/leeward with upwind finish
4	Start – 1 – 1a – 2s/2p - Finish
5	Start – 1 – 1a – 2s/2p – 1 – 1a – 2s/2p - Finish
6	Start – 1 – 1a – 2s/2p – 1 – 1a – 2s/2p – 1 – 1a – 2s/2p - Finish