

## BLAIRGOWRIE YACHT SQUADRON



## 2024-25 J70 Victorian Championships

### SAILING INSTRUCTIONS

**11 – 13 October 2024**

**Organising Authority  
BLAIRGOWRIE YACHT SQUADRON  
2900 Point Nepean Road, Blairgowrie 3942, Victoria**

**In conjunction with the:  
J70 Australia Class Association**

The notation '[DP]' in a rule in the NOR and SI's means that the penalty for a breach of that rule may, at the discretion of the protest committee, be less than disqualification. This changes RRS 64.1.

The notation '[NP]' denotes that a breach of this rule will not be grounds for protest by boat. This changes RRS 62.1(a)

The notation '[SP]' denotes a rule for which a standard penalty will be applied by the race committee without a hearing. This changes RRS 63.1, Appendix A4 and Appendix A5.

## 1 RULES

- 1.1 The racing will be governed by:
- the rules as defined in the 2021-2024 Racing Rules of Sailing (RRS), and
  - the Special Regulations of Australian Sailing (AS), and
  - the rules of the International J70 one design class.
- 1.2 In accordance with the J70 Class Rules and World Sailing Regulation 20.5.1, no advertising shall be displayed pursuant to World Sailing Regulation 20.3.2.
- 1.3 Spot checks may be conducted during the event to verify compliance with these rules and regulations.
- 1.4 If there is conflict in or between rules or regulations (other than RRS), in the Notice of Race or Sailing Instructions, the Sailing Instructions shall take precedence. This changes RRS 63.7.
- 1.5 The prescriptions and special regulations of Australian Sailing Part 1 Category 7 will apply. All boats shall have a current, valid, completed Australian Sailing (AS) Special Regulations Category 7 Equipment Audit Form completed by the boat's Person in Charge. A template is available at: <https://www.sailingresources.org.au/safety/equipment-auditing/>
- 1.6 Blairgowrie Safe Boat Harbour Rules apply for the period of the regatta, and are available at <https://www.bys.asn.au/marina/marina-rules/>.
- 1.7 RRS 40.1 applies to all competitors while ***afloat***. This changes the preamble to RRS Part 4.

## 2 NOTICES TO COMPETITORS

- 2.1 The Official Notice Board is located online on the regatta page of the BYS website. <https://bys.asn.au/2025-j-70-victorian-championships/>

## 3 CHANGES TO SAILING INSTRUCTIONS

- 3.1 Any change to the Sailing Instructions will be posted on the Official Notice Board at least 2 hours before the scheduled time for the first race on the day it will take effect and signaled in accordance with RRS Race Signals, except that any change to the schedule of races will be posted by 1900hrs on the day before it will take effect.

## 4 SIGNALS MADE ASHORE

- 4.1 Signals made ashore will be displayed above the class flag flown from one of the eastern halyards of the BYS Yardarm in front of the clubhouse.
- 4.2 When flag AP is displayed ashore, '1 minute' is replaced with 'not less than 30 minutes' in the race signal AP. This changes Race Signals AP.

## 5 SCHEDULE OF EVENTS and RACES

- 5.1 Event Schedule

Date	Time	Event
Thur 10 Oct 24	0900 - 1600	Hardstand open, berthing available
	1500 - 1700	Registration
Fri 11 Oct 24	0800 - 0900	Registration
	0900	Competitors briefing
	1100	Race session, first warning signal - Three races scheduled.
Sat 12 Oct 24	1100	Race session, first warning signal – Three races scheduled.
Sun 13 Oct 24	1000	Race session, first warning signal – 2 races scheduled.
		Presentation of awards

- 5.2 Eight (8) championship heats are scheduled for the series, with up to four (4) heats each day.
- 5.3 On the last scheduled day of racing, no warning signal will be made after 1400 hours.

## **6 CLASS FLAG**

6.1 The class flag will be a white flag with the J70 class logo.

## **7 RACING AREA**

7.1 Attachment A shows the race area Capel Sound, approximately 3nm to the east.

## **8 THE COURSES**

- 8.1 The diagrams and associated notes in Attachment B show the courses and marks, the order in which marks are to be passed, and the side on which each mark is to be left.
- 8.2 No later than the warning signal, the race committee vessel will indicate the course to be sailed by displaying the corresponding numeral pennant and the approximate magnetic compass bearing from the starting line to Mark 1.
- 8.3 In the event that one of either mark 2s or 2p is not in place, boats shall round the single mark 2 to port.

## **9 MARKS**

- 9.1 The pin end of the start line will be a yellow inflatable pencil mark.
- 9.2 The pin end of the finish line will be a black and white chequered inflatable cylindrical mark.
- 9.3 Marks 1, 2S and 2P will be orange inflatable conical marks.
- 9.4 Mark 1a will be a yellow inflatable conical mark.
- 9.5 Replacement or relocated mark as provided for in SI 11 will be a pink inflatable conical mark.

## **10 THE START**

- 10.1 Races will be started by using RRS 26.
- 10.2 The starting line will be between a staff displaying an orange flag on the race committee vessel at the starboard end and the port end starting mark.
- 10.3 To alert boats that a race starting sequence will begin soon, an orange flag will be flown from the race committee vessel with one sound signal at least five minutes before a warning signal is made.
- 10.4 The Vakaros RaceSense system will be used by the Race Committee and the relevant information will be available to all boats.
- 10.5 The visual identification of boats infringing RRS 29 and RRS 30 by the Race Committee is replaced with the electronic identification by the Vakaros RaceSense system. This changes RRS 29.1, 30.1, 30.2, 30.3 and 30.4.
- 10.6 A set of instructions about the use of the electronic device will be posted on the Official Notice Board.
- 10.7 [DP] [NP] Each boat shall have a working Vakaros Atlas 2 configured for RaceSense at check-in, which shall be mounted on the aft side of the mast at all times while racing. Each boat shall either provide a working Atlas 2 at registration for configuration with RaceSense, or an Atlas 2 will be provided to any boat that does not have one available.
- 10.8 [DP] [NP] Competitors shall do their best to keep the system safe and active. They shall inform the Vakaros staff as soon as possible, on the water or ashore, about any problems encountered with the device.
- 10.9 [NP] Any kind of failure of an Atlas 2, the RaceSense system or communication systems shall not be grounds for a request for redress by a boat, Race Committee and Protest Committee. This changes RRS 41(c), RRS 60.1(b), RRS 60.2(b), 60.3(b), 62.1(a), and 63.1.
- 10.10 [NP] The Race Committee signals, procedures and radio communications will respect relevant articles inside these SIs.
- 10.11 If the RC displays a G (Golf) flag with one sound before the warning signal, SIs from 10.4 to

10.10 will not apply.

- 10.12 Boats subject to individual recall under RRS 29.1 or boats breaking RRS 30.3 (U Flag Rule) or RRS 30.4 (Black Flag Rule) may be broadcast on the VHF Channel using bow numbers as a courtesy
- 10.13 A boat that does not start within 4 minutes after her starting signal will be scored Did Not Start without a hearing. This changes RRS A4 and A5.

## **11 CHANGE TO THE NEXT LEG OF THE COURSE**

- 11.1 The race officer may change the position of the next mark in accordance with RRS 33, subject to the amendments detailed in this clause.
- 11.2 When the next leg of the course is changed, the race committee shall lay a new mark as described in SI 9.5 and remove the original mark(s) as soon as practicable. Boats will round the new Mark 1 and proceed directly to Marks 2S/2P or the finishing line, as appropriate.

## **12 THE FINISH**

- 12.1 A blue flag flown from the race committee vessel will indicate the finishing vessel is on station for the finish.
- 12.2 The finishing line will be between a staff displaying a blue flag on the race committee vessel and the course side of a black and white chequered inflatable cylindrical mark.
- 12.3 For courses 1, 2 and 3 (downwind finish) the race committee vessel will be on the port end of the line when viewed from Marks 1 and 1a.
- 12.4 For courses 4, 5 and 6, the race committee vessel will be on the starboard end of the line when viewed from Marks 2S/2P.

## **13 PENALTY SYSTEM**

- 13.1 The penalty for breaking a rule of Part 2 or RRS 31 shall be a One Turn Penalty (one tack and one gybe in the same direction). This changes RRS 44.1 and 44.2.
- 13.2 A boat that has taken a penalty or retired under RRS 31 or 44.1 shall make a declaration via the online noticeboard facility within the protest time limit.

## **14 TIME LIMITS AND TARGET TIMES**

- 14.1 Time limits and target times are as follows:

<b>Race Time Limit</b>	<b>Mark 1 Time Limit</b>	<b>Race Target Time</b>	<b>Finishing window</b>
90 minutes	20 minutes	45 minutes	10 minutes

- 14.2 A boat that fails to finish within the Time Limit shall be scored DNF. This changes RRS 35.
- 14.3 The finish window will be 10 minutes. Closure of the finish window will be indicated by lowering of the blue flag on the finish boat 10 mins after the first boat sails the course and finishes, or after the last boat has finished (whichever is sooner) accompanied by 1 sound signal. On closure of the finish window, all boats not yet finished are to return to the starting area for the next race if one is scheduled.
- 14.4 If no boat has rounded Mark 1 within 20 minutes of the start signal the race may be abandoned.
- 14.5 Failure to meet the target time will not be grounds for redress. This changes rule RRS 62.1(a).
- 14.6 At the race officer's discretion, boats that are still racing at the closure of their finish window (but within the Time Limit) may be given an allocated place based on their position in the fleet at the time. This changes rules RRS 35, A4 and A5.

## **15 PROTESTS AND REQUESTS FOR REDRESS**

- 15.1 Protest forms are available at the Regatta Office or via the online noticeboard facility. Protests and requests for redress or reopening a hearing shall be delivered there within the appropriate time limit.
- 15.2 The protest time limit is 60 minutes after the last boat has finished the last race of the day or the race committee signals no more racing today, whichever is later.
- 15.3 Notices shall be posted no later than 30 minutes after the protest time limit to inform competitors of hearings in which they are parties or named as witnesses.
- 15.4 Hearings will be held in the protest room, located in the Commodore's Lounge on the upper level of the BYS clubhouse, and will commence at the time posted.
- 15.5 Notices of protests by the race committee or protest committee will be posted to inform boats under rule 61.1(b)
- 15.6 [DP] Breaches of Sailing Instruction 19 will not be grounds for a protest by a boat. This changes rule 60.1(a).
- 15.7 On the last scheduled day of racing a request for reopening a hearing shall be delivered:
  - (a) within the protest time limit if the requesting party was informed of the decision on the previous day;
  - (b) no later than 30 minutes after the requesting party was informed of the decision on that day.This changes rule RRS 66.
- 15.8 On the last scheduled day of racing a request for redress based on a protest committee decision shall be delivered no later than 30 minutes after the decision was posted. This changes rule RRS 62.2.

## **16 ARBITRATION & POST RACE PENALTY**

- 16.1 Refer NOR Rule 15.

## **17 SCORING**

Refer NOR Rule 16.

## **18 SAFETY REGULATIONS**

- 18.1 The sign on/sign off facility shall be via the online regatta system. Skippers will receive a unique sign-on/off link at the regatta registration.
- 18.2 All boats shall SIGN ON and include all crew member details 30 minutes or more before the first scheduled warning signal each day.
- 18.3 All boats shall SIGN OFF at the earliest possible time after completion of the race session, but not later than the end of the protest time limit. A boat which retires or does not intend to continue racing is required to sign off immediately on return to the shore.
- 18.4 Boats failing to sign on in accordance with SI 18.2 shall be scored with a twenty percent (20%) scoring penalty calculated pursuant to RRS 44.3(c) unless the Jury decides differently, applied without a hearing to a boat's first valid race of the day. This change is added to RRS A5.1.
- 18.5 Boats failing to sign off in accordance with SI 18.3 shall be a twenty percent (20%) scoring penalty calculated pursuant to RRS 44.3(c) unless the Jury decides differently, applied without a hearing to a boat's last valid race of the day. This change is added to RRS A5.1.
- 18.6 The sign on period will close 30 minutes prior to the scheduled warning signal time of the first race for that session on that day.
- 18.7 The sign off period will close 60 minutes after the last boat has completed the last race of the session.
- 18.8 No races shall be started or continued if the average wind (measured over the previous 10 mins) is less than 5 knots or more than 25 knots.

## **19 [DP] REPLACEMENT OF CREW OR EQUIPMENT**

- 19.1 Substitution of damaged or lost equipment will not be allowed unless authorised by the race committee. Requests for equipment or crew substitution shall be made via the online noticeboard facility at the first reasonable opportunity.

## **20 EQUIPMENT AND MEASUREMENT CHECKS**

- 20.1 Boats may be weighed and have their sails measured at any stage throughout the regatta and be inspected for outboard and safety equipment.

## **21 SUPPORT BOATS**

- 21.1 Coaches and support boats must remain at least 100m outside the start area, the course and all racing areas from the time of the first warning signal each day until racing has concluded for that day.
- 21.2 Competitors shall have no communication with, and boats shall not be tied to coach or support boats from the first warning signal each race day until racing has been concluded for the day.
- 21.3 If called upon by the race officer, support boats must assist in an emergency as directed, and must maintain a watch on VHF Channel 69 pursuant to RRS 37.

## **22 HAUL-OUT RESTRICTIONS**

- 22.1 Boats may only be hauled out during the regatta with prior written approval from the Race Officer, or in the event of an emergency.

## **23 OFFICIAL BOATS**

- 23.1 [NP] Official boats will be marked with a BYS Burgee.

## **24 TRASH DISPOSAL**

- 24.1 Trash may be placed aboard support or official boats.

## **25 RADIO COMMUNICATION**

- 25.1 All boats shall carry a marine band VHF transceiver capable of receiving and transmitting Marine VHF channels. Boats may use the radio to request assistance in an emergency. No other transmissions of any other nature are permitted by competing boats during each racing day from the first warning signal until racing has been concluded for the day.
- 25.2 The race committee may use VHF radio to advise competitors of general matters relating to racing, for individual and general recalls, or for emergency or safety purposes.
- 25.3 The use of mobile phones or any device capable of sending and/or receiving external electronic communication and/or connecting to the internet is prohibited after the first warning signal on each race day until the boat has finished racing, except as provided in clause 25.1 or in an emergency threatening the safety of a crew member or the flotation of the boat.
- 25.4 The radio frequency for this regatta will be VHF channel 69.
- 25.5 The BYS tower call sign is "Blairgowrie".
- 25.6 The race committee vessel call sign is "J70 Start".

## **26 TROPHIES and PRIZES**

- 26.1 Prizes will be awarded for the first three overall places, the first three Corinthian places, and the first Youth Crew (all crew aged 25 or under on the first day of the regatta).
- 26.2 Other prizes may be awarded at the discretion of the J70 Class Association.

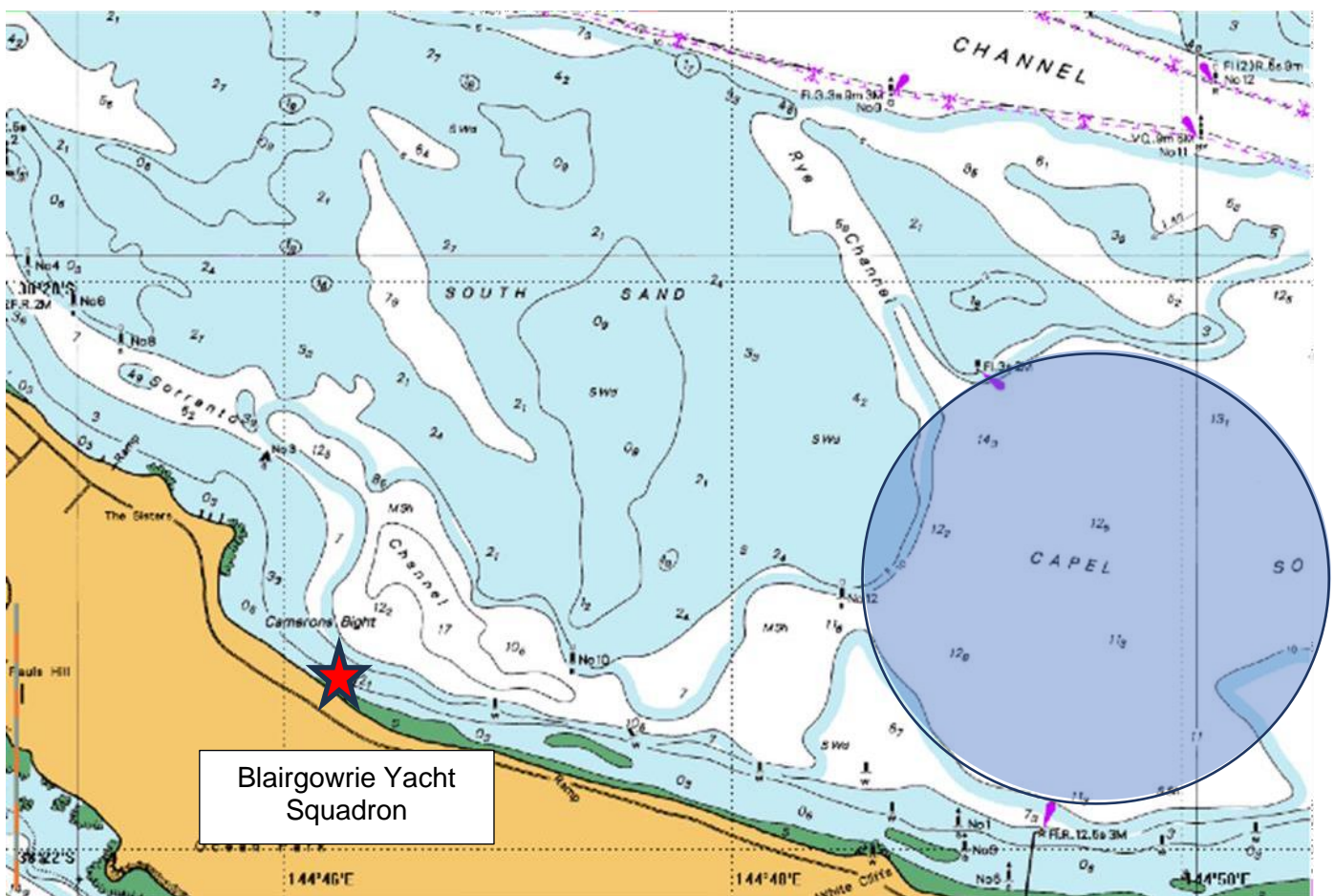
**27 DISCLAIMER OF LIABILITY**

27.1 Competitors participate in the regatta entirely at their own risk. See RRS 3, Decision to Race. The organizing authority will not accept any liability for material damage or personal injury or death sustained in conjunction with or prior to, during, or after the regatta.

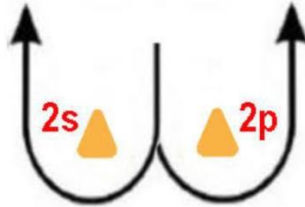
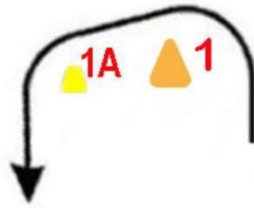
**28 INSURANCE**

28.1 Each participating boat shall be insured with valid third-party property liability insurance and third-party personal liability insurance with a minimum cover of \$10,000,000.00 per incident or the equivalent, with cover being maintained for the duration of the regatta. All owners or competitors who sign the entry forms are deemed to have made a declaration that they hold such cover. Owners or competitors not holding this cover shall withdraw their entry.

**Attachment A – Racing Area**



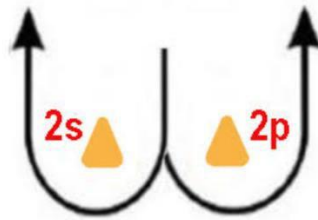
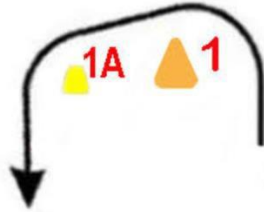
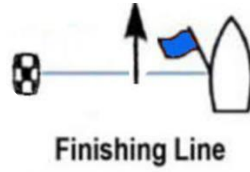
## Attachment B- Courses



Course	Windward/leeward with downwind finish
1	Start – 1 – 1a – Finish
2	Start – 1 – 1a – 2s/2p – 1 – 1a - Finish
3	Start – 1 – 1a – 2s/2p – 1 – 1a – 2s/2p – 1 – 1a - Finish



Attachment B – Courses



Course	Windward/leeward with upwind finish
4	Start – 1 – 1a – 2s/2p - Finish
5	Start – 1 – 1a – 2s/2p – 1 – 1a – 2s/2p - Finish
6	Start – 1 – 1a – 2s/2p – 1 – 1a – 2s/2p – 1 – 1a – 2s/2p - Finish