

BLAIRGOWRIE YACHT SQUADRON



**BYS Women's Sportsboat Regatta**  
**SAILING INSTRUCTIONS**

**19 & 20 November 2022**

Organising Authority  
BLAIRGOWRIE YACHT SQUADRON  
2900 Nepean Road, Blairgowrie 3942, Victoria

The notation '[DP]' in a rule in the NOR or SI means that the penalty for a breach of that rule may, at the discretion of the protest committee, be less than disqualification.

## 1 RULES

- 1.1 The regatta will be governed by the rules as defined in The Racing Rules of Sailing 2021-2024 (RRS), the Special Regulations of Australian Sailing (AS) - Part 2 and the rules and regulations of the International J70 Class Association (IJCA).
- 1.2 If there is conflict in or between rules or regulations (other than RRS), Notice of Race or Sailing Instructions, the Sailing Instructions shall take precedence. This changes RRS 63.7.

## 2 NOTICES TO COMPETITORS

- 2.1 Notices to competitors will be posted on the Official Notice Board located in the junior lounge and on the club website (<https://www.bys.asn.au>).

## 3 CHANGES TO SAILING INSTRUCTIONS

- 3.1 Any change to the Sailing Instructions will be posted on the Official Notice Boards at least 2 hours before the scheduled time for the first race on the day it will take effect and signalled in accordance with RRS Race Signals. Any change to the time of the first warning gun for the commencement of the days racing schedule will be posted by 1900 hrs on the day before the changes will take effect
- 3.2 Depending on the prevailing weather conditions, the race committee reserves the right to collapse the semi-final and final events into one series of 3 races comprising the top 4 boats from the ranking of final positions after completion of the six racing sessions or abandon entirely the semi-final and finals series and allocate prizes based on the ranking of final positions. This change will be posted on the Official Notice Boards at least 2 hours before the scheduled time for the semi-final series

## 4 SIGNALS MADE ASHORE

- 4.1 Signals made ashore will be displayed on the eastern-most halyards of the BYS flag pole in front of the clubhouse and also on a flag pole located adjacent to the hardstand
- 4.2 When flag AP is displayed ashore, '1 minute' is replaced with 'not less than 30 minutes' in the race signal AP. This changes Race Signals AP

## 5 SCHEDULE OF EVENTS

### 5.1 REGISTRATION, BRIEFING & SOCIAL SCHEDULE

Date	Event	Time
Sat 19 Nov	Registration ( <b>Clubhouse</b> )	0800-0815 hrs
	Information Briefing ( <b>Clubhouse</b> )	0815 hrs
	After racing Dinner ( <b>Clubhouse</b> )	1900 hrs
Sun 20 Nov	Presentation ( <b>Clubhouse/Deck</b> )	Approx. 1830 hrs

## 5.2 RACING SCHEDULE

	<b>Racing Session</b>	
Sat 19 Nov	Racing Session #1. RED. (4 races)	<b>Warning: 1000 hrs</b> Random allocation of teams
	Racing Session #2. WHITE. (4 races)	<b>Warning: approx. 1200 hrs</b> Random allocation of teams
	Racing Session #3. GREEN. (4 races)	<b>Warning: approx. 1400 hrs</b> Top 3 from RED session Top 2 from WHITE session
	Racing Session #4. YELLOW. (4 races)	<b>Warning: approx. 1600 hrs</b> Bottom 2 from RED session Bottom 3 from WHITE session
Sun 20 Nov	Racing Session #5 PURPLE. (4 races)	<b>Warning: 0930 hrs</b> Top 3 from GREEN session Top 2 from YELLOW session
	Racing Session #6 BLACK. (4 races)	<b>Warning: approx. 1130 hrs</b> Bottom 2 from GREEN session Bottom 3 from YELLOW session
	Ranking of final positions (1-10)	
	<b>SEMI FINAL</b> (up to 6 races) GOLD Session (best of 3) SILVER Session (best of 3)	<b>Warning: approx. 1330 hrs</b>  Team 1 vs Team 4 Team 2 vs Team 3
	<b>FINAL</b> (up to 3 races)	<b>Warning: approx. 1600hrs</b> Winner of GOLD session vs Winner of SILVER session

5.3 The racing schedule allocates the 10 teams with the 5 available boats and the order in which teams swap in and out between races. There will be a maximum of 12 races for each team.

5.4 Boats will be randomly allocated to the teams for each racing session.

5.5 Teams not racing will be kept on shore. BYS RIBs will ferry out teams to their allocated boats for an on-water transfer between racing sessions

5.6 The 2 boat semi-final and Finals racing will be conducted according to fleet rules (not match racing or team racing rules)

## 6 CLASS FLAG

6.1 The class flag will be a white flag with the J70 class logo.

## **7 RACING AREA**

7.1 The racing area will be approximately 0.6-1.5nm to the north east of the BYS clubhouse over an area known as the Sorrento Channel and the South Sand (refer to Attachment B).

## **8 THE COURSES**

8.1 The diagrams and associated notes in Attachment C show the course and marks, the order in which marks are to be passed, and the side on which each mark is to be left.

8.2 No later than the warning signal, the race committee vessel may indicate the approximate magnetic compass bearing from the starting line to Mark 1.

8.3 In the event that only one of either Mark 1S, 1P, 4S or 4P are not in place, boats shall round the single mark 1 or 4 to port.

## **9 MARKS**

9.1 The Start and Finish Pin mark shall be a black and white inflatable cylindrical buoy.

9.2 Marks 1S, 1P, 4S and 4P will be orange inflatable truncated conical buoys.

9.3 Replacement mark will be a yellow inflatable truncated conical buoy

## **10 THE START**

10.1 To alert boats that a race starting sequence will begin soon, an orange flag will be flown from the race committee vessel with one sound signal two minutes before the commencement of the start sequence. Competitors may be advised on a VHF channel specifically allocated to the regatta (channel to be announced)

10.2 Start Sequence will be 3 minutes from the raising of the class flag (Warning Sound signal) to lowering of the class flag (Start Sound signal). This amends rule 26.

10.3 The starting line shall be between a race committee vessel displaying an orange flag at the starboard end and the course side of a black and white inflatable mark at the port end.

10.4 A boat starting later than 4 minutes after her starting signal will be scored Did Not Start without a hearing. This changes RRS A4 and A5.

## **11 CHANGE OF THE NEXT LEG OF THE COURSE**

11.1 The race committee may change the position of the next mark in accordance with RRS 33, subject to the amendments detailed in this clause.

11.2 When the next leg of the course is changed, the race committee shall lay a new mark as described in clause 9.3 and remove the original mark(s) as soon as practicable.

11.3 In the event that the position of Mark 1 is changed, Marks 1S and 1P may be replaced by a new single Mark 1 and boats will round the new Mark 1 and proceed directly to Marks 4S/4P or the finishing line, as appropriate.

## **12 THE FINISH**

12.1 A blue flag flown from the race committee vessel will indicate the finishing vessel is on station for the finish.

12.2 The finishing line will be between a staff displaying a blue flag on the race committee vessel and a black and white inflatable mark.

12.3 The race committee vessel will be on the port end of the line when viewed from Marks 1S and 1P

### 13 ON-WATER UMPIRING AND PENALTY SYSTEM

13.1 Appendix UF will apply (Attachment D)

### 14 TIME LIMITS AND TARGET TIMES

14.1 The time limits and target times are as follows

<b>Race Time Limit</b>	<b>Mark 1 Time Limit</b>	<b>Race Target Time</b>
35 mins	15 mins	15 mins

14.2 A boat that fails to finish within the Time Limit shall be scored DNF. This changes RRS 35.

14.3 The finish window will be 5 minutes. Closure of the finish window will be indicated by lowering of the blue flag on the finish boat at 5 mins after the first boat sails the course and finishes, or if all boats have finished, after the last boat has finished (whichever is sooner) accompanied by 1 sound signal. On closure of the finish window, all boats not yet finished are to return to the starting area for the next race if one is scheduled.

14.4 If no boat has rounded Mark 1 within 15 minutes of the start signal the race may be abandoned.

14.5 Failure to meet the target time will not be grounds for redress. This changes rule 62.1(a).

14.6 Boats that are still racing at the closure of their finish window (but within the Race Time Limit) will be given an allocated place based on their position in the fleet at the time. This changes rules 35, A4 and A5.

### 15 BOAT IDENTIFICATION

15.1 Each boat will be issued with an individual coloured flag (Attachment A). During racing, this must be flown conspicuously from the backstay. Failure to comply with this instruction shall result in a score of DNF for that race.

### 16 SCORING

16.1 A maximum of 12 races/team are scheduled

16.2 There will be no discarded races

16.3 Five races/team will constitute a series

This changes RRS Appendix A2

### 17 SAFETY REGULATIONS

17.1 All teams intending to race shall sign using the sign-on sheets located at the registration desk.  
Signing on will apply to all race sessions for that day

17.2 All teams are required to sign off using the sign off sheets located at the registration desk as soon as practicable after returning to shore at the completion of the session's racing.

17.3 The sign on period will close at the scheduled warning signal time of the first race for that session on that day.

17.4 The sign off period will close 60 minutes after the last boat has completed the last race of the session.

- 17.5 Failure to Sign On/Sign Off in accordance with SI.17.1 and 17.2 will result in that team being scored a DP of 50% of their finishing place in the first race of the day without a hearing. This changes Rule 63.1, A4 and A5.
- 17.6 A team that retires from a race shall notify the race committee as soon as possible.
- 17.7 No races shall be started or continued if the average wind (measured over the previous 15 mins) is less than 5 knots or more than 25 knots.

## **18 SUPPORT BOATS**

- 18.1 Support boats must remain at least 100m outside the start area, the course and all racing areas from the time of the first warning signal each day until racing has concluded for that day.
- 18.2 Competitors shall have no communication with, and boats shall not be tied to, coach or support boats from the first warning signal each race day until racing has been concluded for the day.
- 18.3 If called upon by the race officer, support boats must assist in an emergency as directed, and must maintain a watch on the dedicated regatta VHF Channel (channel to be advised).

## **19 OFFICIAL BOATS**

- 19.1 Official boats will be marked with a BYS Burgee.

## **20 RADIO COMMUNICATION**

- 20.1 All boats shall carry a marine band VHF transceiver capable of receiving and transmitting Marine VHF channels. Boats shall use the radio to report retirement from racing the end of the racing session and may also use the radio to request assistance in an emergency. No other transmissions of any other nature are permitted by competing boats from the first warning signal until racing has conducted.
- 20.2 The race committee may use VHF radio to advise competitors of general matters relating to racing (including recalls at the start) or for emergency or safety purposes.
- 20.3 The use of mobile phones or any device capable of sending and/or receiving external electronic communication and/or connecting to the internet is prohibited after the first warning signal until the boat has finished racing, except in an emergency threatening the safety of a crew member or the flotation of the boat and only with the express permission of the race committee.
- 20.4 Except in an emergency, a boat that is racing shall not make voice or data transmissions and shall not receive voice or data communication that is not available to all boats.
- 20.5 There will be a dedicated VHF radio frequency for this regatta (to be advised).
- 20.6 The BYS tower call sign is "Blairgowrie".
- 20.7 The race committee vessel call sign is "Start".

## **21 TROPHIES and PRIZES**

- 21.1 Prizes will be awarded for 1<sup>st</sup>, 2<sup>nd</sup> and 3<sup>rd</sup> places after completion of the finals series. In the event of no final series being sailed, places will be awarded based on placings in the final table.

## **22 DISCLAIMER OF LIABILITY**

- 22.1 Competitors participate in the regatta entirely at their own risk. The organizing authority will not accept any liability for material damage or personal injury or death sustained in conjunction with or prior to, during, or after the regatta.

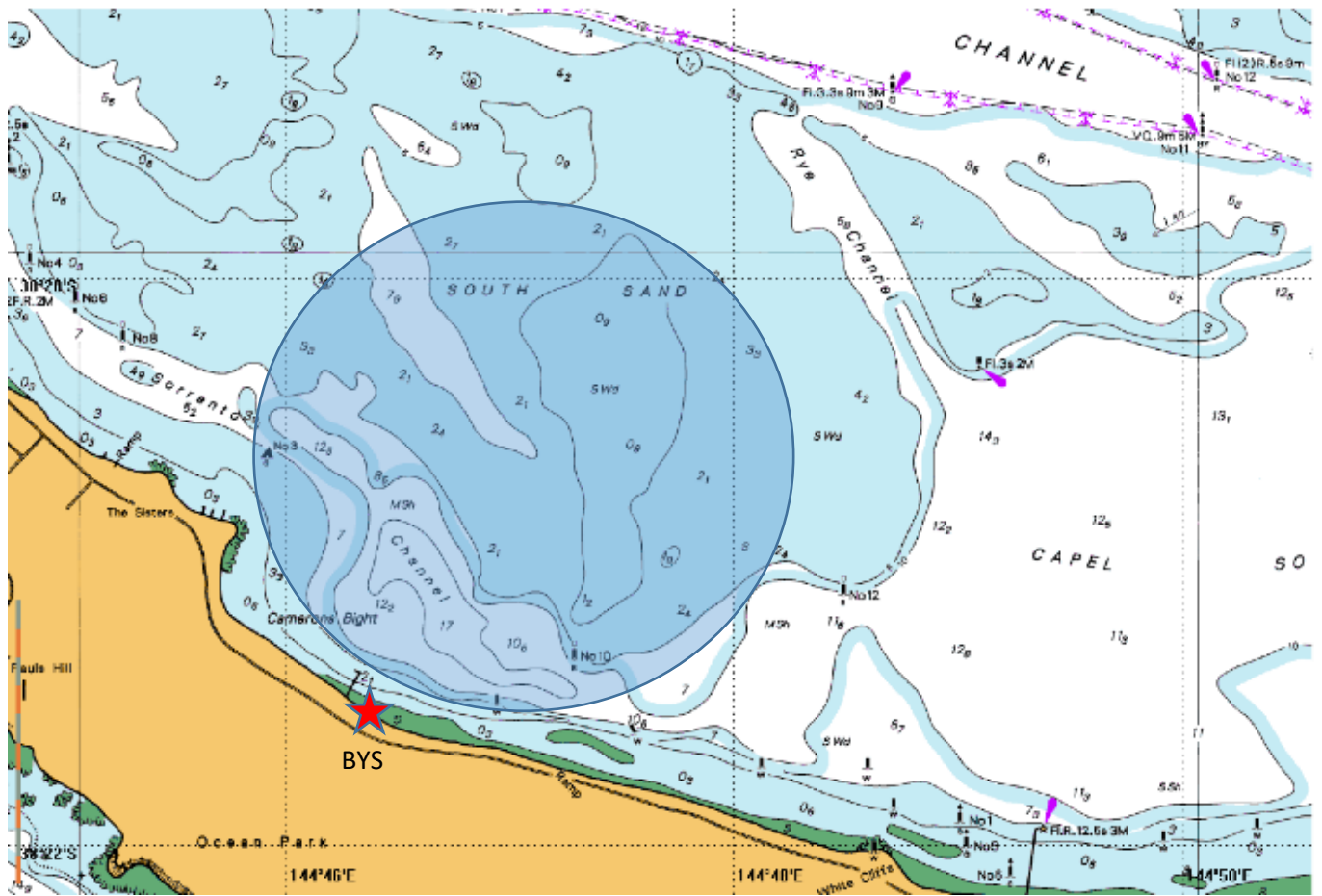
## 23 INSURANCE

23.1 Each participating boat will be insured with valid third-party property and personal liability insurance with a minimum cover of \$10,000,000.00 per incident or the equivalent.

### ATTACHMENT A- COMPETITOR BOATS

<b>Boat Name</b>	<b>Boat #</b>	<b>Boat Flag</b>
Maw Civilised	Boat 1	White
Spike	Boat 2	Yellow
Javelin	Boat 3	Purple
Notte Bianca	Boat 4	Black
Skyhook	Boat 5	Blue

# ATTACHMENT B – RACING AREA





## ATTACHMENT C



**COURSE: Start, 1S/1P, 4S/4P, 1S/1P, Finish**

Marks 1S & 1P are orange inflatable truncated conical buoys

Marks 4S & 4P are orange inflatable truncated conical buoys

Start/Finish Pin is a black/white checked inflatable buoy

Replacement mark is a yellow inflatable truncated conical buoy



## ATTACHMENT D

### APPENDIX UF

#### UMPIRED FLEET RACING

BYS Women's Sportsboat Regatta Edition.

*Umpired fleet races shall be sailed under The Racing Rules of Sailing as changed by this appendix. Races shall be umpired. The rule changes in UF1 have been approved by World Sailing under Regulation 28.1.5(b) on the condition that only the provided options are used. This appendix applies only when it is referred to in the Sailing Instructions and made available for all competitors.*

#### **UF1 CHANGES TO THE DEFINITIONS, THE RULES OF PART 1 AND 2, AND RULE 70**

**UF1.1** Add to the definition *Proper Course*: 'A boat taking a penalty or manoeuvring to take a penalty is not sailing a *proper course*.'

**UF1.2** Add new rule 7 to Part 1:

#### **7 LAST POINT OF CERTAINTY**

The umpires will assume that the state of a boat, or her relationship to another boat, has not changed, until they are certain that it has changed.'

**UF1.3** Rule 14 is changed to:

#### **14 AVOIDING CONTACT**

14.1 If reasonably possible a boat shall

- (a) avoid contact with another boat,
- (b) not cause contact between boats, and
- (c) not cause contact between a boat and an object that should be avoided.

However, a right-of-way boat, or one sailing within the *room* or *mark-room* to which she is entitled, need not act to avoid contact until it is clear that the other boat is not *keeping clear* or giving *room* or *mark-room*.

14.2 When there is contact between hulls, the umpires may, without a hearing, impose a scoring penalty of 3 points on a boat that was penalized in the incident. Furthermore, the umpires may also impose a scoring penalty of 2 points on other boats if they consider that these boats contributed to the contact. This rule also applies to contact with a race committee vessel

14.3 When there is contact that causes damage, or the umpires decide a boat has broken rule 14 and damage resulted, they may, without a hearing, impose a scoring penalty on any boat involved in the incident. The minimum penalty to be applied in such a case is 4 points.

**UF1.4** When rule 20 applies, the following arm signals are required in addition to the hails:

- (a) for *room* to tack, repeatedly and clearly pointing to windward; and
- (b) for 'You tack', repeatedly and clearly pointing at the other boat and waving the arm to windward.

**UF1.5** Rule 70 is deleted.

## UF1.6 Test rules

- (a) The definition *Mark-Room* is changed to:

**Mark-Room** Room for a boat to sail her proper course to round or pass the mark on the required side.

However, *mark-room* for a boat does not include *room* to tack unless she is *overlapped* inside and to *windward* of the boat required to give *mark-room* and she would be *fetching* the *mark* after her tack.

- (b) Rule 17 is deleted.

## UF2 CHANGES TO OTHER RULES

- UF2.1 Rule 28.2 is changed to:

### 28 SAILING THE COURSE

28.2. A boat may correct any errors in *sailing the course*, provided she has not rounded the next mark or crossed the finishing line to *finish*.

- UF2.2 Rule 31 is changed to:

### 31 TOUCHING A MARK

While *racing*, neither the crew nor any part of a boat's hull shall touch a starting *mark* before *starting*, a *mark* that begins, bounds or ends the leg of the course on which she is sailing, or a finishing *mark* after *finishing*. In addition, while *racing*, a boat shall not touch a race committee vessel that is also a *mark*.

## UF3 ON WATER PROTESTS AND PENALTIES

- UF3.1 In this appendix, 'a penalty' will mean the following:

A One-Turn Penalty taken in accordance with rule 44.2.

- UF3.2 The first sentence of rule 44.1 is changed to: 'A boat may take a penalty when, in an incident while *racing*, she may have broken one or more of the *rules* of Part 2 (except rule 14 when she has caused damage or injury), rule 31 or rule 42. However, when she may have broken a rule of Part 2 and rule 31 in the same incident, she need not take the penalty for breaking rule 31'

### UF3.3 On the Water Protests by Boats and Penalties

- (a) While *racing*, a boat may protest another boat under a rule of Part 2 (except rule 14) or under rule 31 or rule 42; however, a boat may only protest under a rule of Part 2 for an incident in which she was involved. To do so she shall hail 'Protest' and conspicuously display a red flag at the first reasonable opportunity for each. She shall remove the flag before, or at the first reasonable opportunity after a boat involved in the incident has taken a penalty voluntarily or after an umpire's decision.
- (b) A boat that protests as provided in rule UF3.3(a) is not entitled to a hearing, unless an umpire signals in accordance with UF3.5(d). Instead, a boat involved in the incident may acknowledge breaking a rule by voluntarily taking a penalty. An umpire may penalize any boat that broke a rule and was not exonerated, unless the boat took a penalty voluntarily.

### UF3.4 Penalties and Protests Initiated by an Umpire

- (a) When a boat
- (1) breaks rule 31 and does not take a penalty,
  - (2) breaks rule 42,

- (3) gains an advantage despite taking a penalty,
- (4) commits a breach of sportsmanship, or
- (5) fails to comply with rule UF3.6 or to take a penalty when required to do so by an umpire,
- (6) fails to comply with rule UF2.1 (rule 28.2) an umpire shall disqualify her under rule UF3.5(c),

an umpire may penalize her without a protest by another boat. The umpire may impose a penalty or more, each signalled in accordance with rule UF3.5(b), or disqualify her under rule UF3.5(c), or report the incident to the protest committee for further action. If a boat is penalized under rule UF3.4(a)(5) for not taking a penalty or taking a penalty incorrectly, the original penalty is cancelled,

- (b) An umpire who decides, based on his own observation or a report received from any source, that a boat may have broken a rule, other than rule UF3.6 or rule 28 or a rule listed in rule UF3.3(a), may inform the protest committee for its action under rule 60.3. However, he will not inform the protest committee of an alleged breach of rule 14 unless there is damage or injury.

### **UF3.5 Umpire Signals**

An umpire will signal a decision as follows:

- (a) A green and white flag with one long sound means 'No penalty.'
- (b) A red flag with one long sound means 'a penalty is imposed or remains outstanding.' The umpire will hail or signal to identify each such boat.
- (c) A black flag with one long sound means 'A boat is disqualified.' The umpire will hail or signal to identify the boat disqualified.
- (d) A J flag with one long sound means 'The umpires do not have the facts required to make a decision.'

### **UF3.6 Imposed Penalties**

- (a) A boat penalized under rule UF3.5(b) shall take a penalty.
- (b) A boat disqualified under rule UF3.5(c) shall promptly leave the course area.

## **UF4 RACE COMMITTEE ACTIONS**

- UF4.1** After boats have finished, the race committee will inform competitors about the results over radio on VHF 71

## **UF5 PROTESTS; REQUESTS FOR REDRESS OR REOPENING; APPEALS; OTHER PROCEEDINGS**

- UF5.1** No proceedings of any kind may be taken in relation to any action or non-action by an umpire.
- UF5.2** A boat is only entitled to a hearing when the umpires have signalled in accordance with UF3.5(d) or under UF5.3.
- UF5.3** A boat intending to
  - (a) protest another boat under a rule other than rule UF3.6 or rule 28, or a rule listed in rule UF3.3(a),

- (b) protest another boat under rule 14 if there was contact that caused damage or injury, or
- (c) request redress

shall inform the race committee in the following way:

By radioing the race committee on VHF 71 within 2 minutes of the advice of results on VHF 71.

- UF5.4** The time limit defined in rule UF5.3 also applies to protests under rule UF5.9, UF5.10 and UF5.11 when such protests are permitted. The protest committee shall extend the time limit if there is good reason to do so.
- UF5.5** The race committee will promptly inform the protest committee about any protests or requests for redress made under rule UF5.3.
- UF5.6** The third sentence of rule 61.1(a) and all of rule 61.1(a)(2) are deleted.
- UF5.7** The first three sentences of rule 64.2 are changed to: 'When the protest committee decides that a boat that is a *party* to a protest hearing has broken a rule, it may impose penalties other than disqualification, and may make any other scoring arrangement it decides is equitable. If a boat has broken a *rule* when not *racing*, the protest committee shall decide whether to apply any penalty to the race sailed nearest in time to that of the incident or make some other arrangement.'
- UF5.8** Hearings
- Except for a hearing under rule 69.2
- (a) Protests and requests for redress need not be in writing.
  - (b) The protest committee may inform the protestee and schedule the hearing in any way it considers appropriate and may communicate this orally.
  - (c) The protest committee may take evidence and conduct the hearing in any way it considers appropriate and may communicate its decision orally.
  - (d) If the protest committee decides that a breach of a rule has had no effect on the outcome of the race, it may impose a scoring penalty of points or fraction of points or make any other arrangement it decides is fair, which may be to impose no penalty.
  - (e) If the protest committee penalizes a boat in accordance with rule UF5.7 or if a standard penalty is applied, all other boats will be informed about the change of the penalized boat's score.
- UF5.9** The race committee will not protest a boat.
- UF5.10** The protest committee may protest a boat under rule 60.3. However, it will not protest a boat for breaking rule UF3.6 or rule 28, a rule listed in rule UF3.3(a), or rule 14 unless there is damage or injury.
- UF5.11** The technical committee will only protest a boat under rule 60.4 when it decides that a boat or personal equipment does not comply with the class rules, rule 50, or the rules in the equipment regulations of the event, if such exist. In such a case, the technical committee shall protest.
- UF5.12** Rule 66.2 is changed to 'A *party* to the hearing under this appendix may not request a reopening.'