

BLAIRGOWRIE YACHT SQUADRON



**BYS Women's Sportsboat Regatta
NOTICE OF RACE**

19 & 20 November 2022

Amendment #1 14/11/22

**Organising Authority
BLAIRGOWRIE YACHT SQUADRON
2900 Nepean Road, Blairgowrie 3942, Victoria**

Blairgowrie Yacht Squadron is pleased to invite all competitors to the inaugural 2022 BYS Women's Sportsboat Regatta to be held at Blairgowrie on the Mornington Peninsula on 19 & 20 November 2022.

1. RULES

1.1. The racing will be governed by:

- the rules as defined in the 2021-2024 Racing Rules of Sailing (RRS), and
- the Special Regulations of Australian Sailing (AS) - Part 2, and
- the rules of the International J70 one design class.

2. ELIGIBILITY AND ENTRY

- 2.1. Each helmsperson shall be a financial member of their representative club.
- 2.2. The event is open to female competitors over the age of 18.
- 2.3. Entries must be lodged at www.trybooking.com/BZRLA
- 2.4. A maximum number of 12 teams will be accepted for the event.
- 2.5. Six boats will be made available for the regatta.
- 2.6. All members of the crew shall be female, unless otherwise approved by the organising authority.

3. FEES

3.1. Fees are as follows:

| |
|--------------------------|
| Entry Fee/team |
| Entry fee: \$ 550 |

3.2. An additional damage/repair deposit of \$800 will apply. This money will be refunded back to each team at the end of the regatta minus any incurred cost for damage/repairs. Damage/repair costs will be deducted evenly from all teams. See Attachment B.

4. SCHEDULE OF EVENTS

4.1. SUMMARY EVENT/SOCIAL SCHEDULE

| Date | Event | Time |
|------------|----------------------------------|------------------|
| Sat 19 Nov | Registration (Clubhouse) | 0800 - 0815 hrs |
| | Information Briefing (Clubhouse) | 0815 hrs |
| | After racing Dinner (Clubhouse) | 1900 hrs |
| Sun 20 Nov | Presentation (Clubhouse) | Approx. 1830 hrs |

4.2. RACING SCHEDULE

| Date | Racing Sessions | |
|------------|----------------------------------|--------------------------|
| Sat 19 Nov | Racing Session #1. RED (4 races) | Warning: 1000 hrs |

| | | |
|------------|---|---|
| | | Random allocation of teams |
| | Racing Session #2. WHITE (4 races) | Warning: approx. 1200 hrs Random allocation of teams |
| | Racing Session #3. GREEN (4 races) | Warning: approx. 1400 hrs Top 3 from RED session Top 2 from WHITE session |
| | Racing Session #4. YELLOW (4 races) | Warning: approx. 1600 hrs Bottom 2 from RED session Bottom 3 from WHITE session |
| Sun 20 Nov | Racing Session #1. PURPLE. (4 races) | Warning: 0930 hrs Top 3 from GREEN session Top 2 from YELLOW session |
| | Racing Session #2. BLACK. (4 races) | Warning: approx. 1130 hrs Bottom 2 from GREEN session Bottom 3 from YELLOW session |
| | Ranking of final positions (1-10) | |
| | Semi-final Session (up to 6 races) GOLD Session (best of 3) SILVER Session (best of 3) | Warning: approx. 1330 hrs Team 1 vs Team 4 Team 2 vs Team 3 |
| | Final (3 races) | Warning: approx. 1600 hrs Winner of GOLD session vs winner of SILVER session |

4.3. Boats will be randomly allocated at the briefing for each racing session. A coloured flag will be attached to the backstay of the boat during the racing. As there will be more teams than boats, an on-water transfer will take place between racing sessions via RIB.

5. SAILING INSTRUCTIONS

5.1. The Sailing Instructions will be available online on the club's website (<https://www.bys.asn.au>) in the week before the event. Sailing Instructions will also be posted on the official notice board located underneath the main club house.

6. REGISTRATION, MEASUREMENT

- 6.1. All boats will have current Measurement Certificates and a valid Sail Measurement Certificate provided by a certified class measurer.
- 6.2. No boat shall carry any unreasonable quantities of water or anything else for the purpose of adding ballast. The amount of water permitted to be carried should be

sufficient for the crew for drinking purposes during the day's racing. A maximum of 10 litres of water per boat is acceptable.

7. VENUE

7.1. Attachment A shows the primary location of the racing areas in the waters directly to the north-north-east of the Blairgowrie Yacht Squadron on the South Sand.

8. THE COURSES

8.1. The courses to be sailed will be windward/leeward courses as described in the Sailing Instructions.

9. ON WATER UMPIRING

9.1. On-water umpiring and penalty rules as detailed in the Sailing Instructions may apply.

9.2. Penalty for breaking a rule of Part 2 shall be a One Turn Penalty (one tack and one gybe in the same direction). This changes RRS 44.1 and 44.2.

10. SCORING

10.1. A maximum of **12 races** will be raced by every team.

10.2. After this series of round-robin heats, a ranking of teams will be completed.

10.3. The top 4 teams will go into a semi-final series.

10.4. The winner of each semi-final session will compete in a best of 3 final series. This changes RRS Appendix A2.

11. SUPPORT BOATS

11.1. Coaches and support boats must remain well away from the start area, the course area and racing areas (at a minimum of 100m) from the time of the first warning signal until racing has concluded.

11.2. Competitors shall have no communication with and boats shall not be tied to coach or support boats from the first warning until racing has been concluded.

11.3. Support boats shall make themselves available to assist the Race Officer in the management of any on-water safety matter or in the event of an emergency, and drivers must register their boats and provide a mobile telephone number on which they may be contacted.

12. RADIO COMMUNICATION

12.1. All boats shall carry a marine band VHF transceiver capable of receiving and transmitting Marine VHF channels. Boats shall use the radio to report retirement from racing and may use the radio to request assistance in an emergency. No other transmissions of any other nature are permitted by competing boats from the first warning signal until racing has concluded.

12.2. The race committee may use VHF radio to advise competitors of general matters relating to the racing (including recalls at the start) or for emergency or safety purposes.

12.3. The use of mobile phones or any device capable of sending and/or receiving external electronic communication and/or connecting to the internet is prohibited after the first warning signal until the boat has finished racing, except in an emergency threatening the safety of a crew member or the flotation of the boat and only with the express permission of the race committee.

13. PRIZES

13.1. Prizes will be awarded to first and runner-up place getters.

14. DISCLAIMER OF LIABILITY

14.1. Competitors participate in the regatta entirely at their own risk. The organizing authority will not accept any liability for material damage or personal injury or death sustained in conjunction with or prior to, during, or after the regatta.

15. INSURANCE

15.1. Each participating boat will be insured with valid third-party property and personal liability insurance with a minimum cover of \$10,000,000.00 per incident or the equivalent.

16. RIGHTS TO USE NAME AND LIKENESS

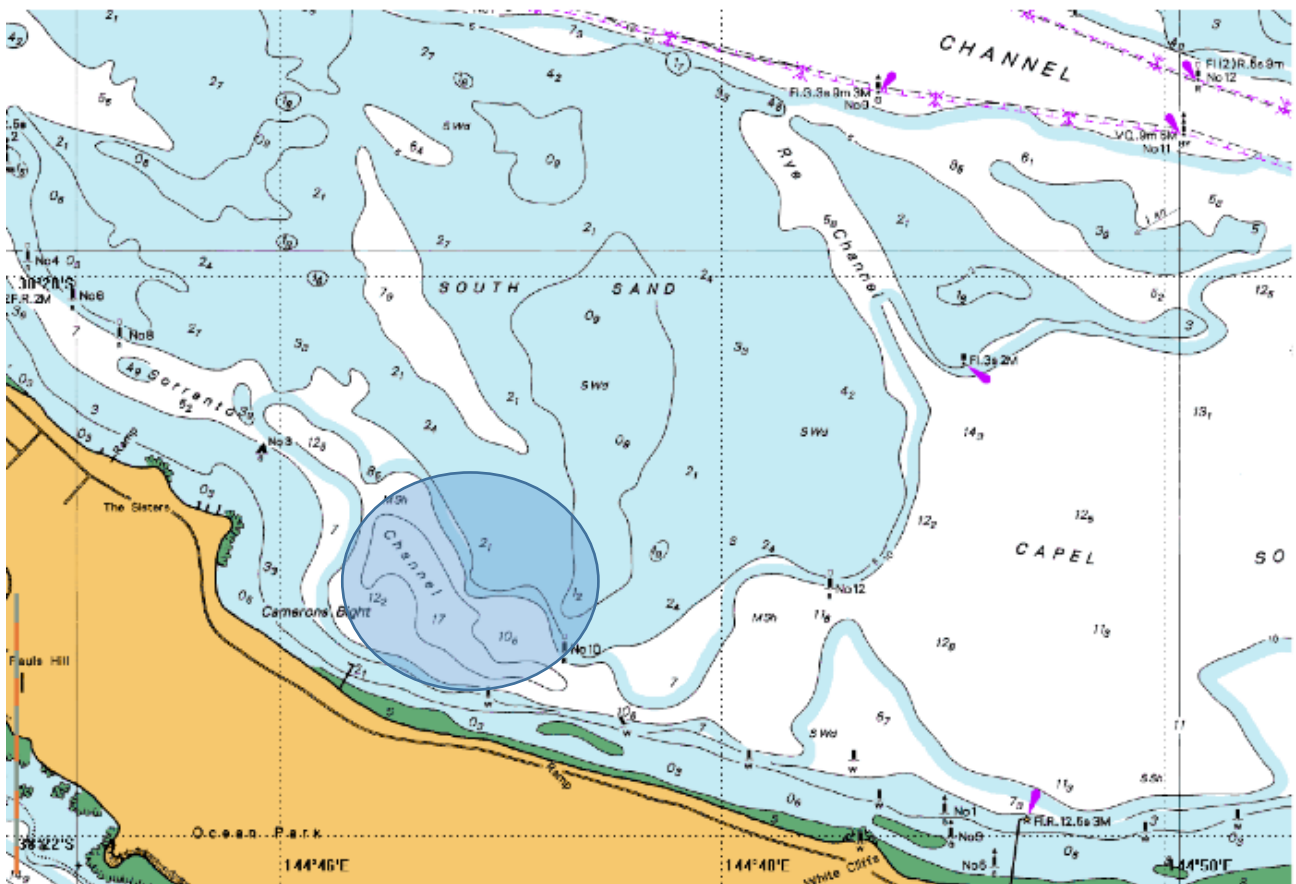
16.1. In participating in this event, a competitor automatically grants to the Organising Authority the right in perpetuity, to make, use and show, from time to time and at their discretion, any motion pictures, still pictures and live, taped or film television and other reproductions of him/her during the period of the competition in which the competitor participates and in all material related to the event without compensation.

17. FURTHER INFORMATION

17.1. BLAIRGOWRIE YACHT SQUADRON Sailing Office: (03) 5925 9600

| | |
|---|------------------------------|
| Felicia Brown Regatta Manager | felicia.brown1959@icloud.com |
| Michelle de Blaquiere Head of Sailing | michelle@bys.asn.au |
| Andrew Little AS National Race Officer | aflittle.bys@gmail.com |
| Richard Backwell Club Captain | richardb@vicbar.com.au |
| Andrew Cooper General Manager | andrewcooper@bys.asn.au |

ATTACHMENT A – RACING AREA



ATTACHMENT B – TERMS AND CONDITIONS FOR HIRE OF THE BYS J/70s (CLUB & PRIVATE OWNERS)

1. ORGANISATION

BYS reserves the right to cancel this license if it observes or has reason to believe the terms and conditions of hire are not being followed.

2. BOAT ALLOCATION and RULES

The boats must be used as presented and no modifications may be made to the boat. Standing rigging tension has been pre-set and must not be altered. Sails as supplied must not be re-cut or altered.

3. PROHIBITED ITEMS and ALLOCATION

- 3.1. Any additions, omissions or alterations to the equipment supplied.
- 3.2. The use of any equipment for a purpose other than that intended.
- 3.3. The use of sails other than what is provided by BYS.
- 3.4. The replacement of any equipment provided.
- 3.5. Sailing the boat in a manner that it is reasonable to predict damage would result.
- 3.6. Boarding a boat without prior permission.
- 3.7. Taking a boat from its berth without having paid the hire fee and damage deposit.
- 3.8. Hauling out a boat or cleaning surfaces below the waterline.
- 3.9. Perforating sails, even to attach tell tales.
- 3.10. Adjusting or altering the tensions of standing rigging.
- 3.11. Cutting any cords or ropes.
- 3.12. The use of electronic instruments other than compass and watches.
- 3.13. Putting permanent marks on the boats or sheets.
- 3.14. Using side stays to facilitate roll-tacking.
- 3.15. Leaving any rubbish or personal items on-board after racing.
- 3.16. Hiring a boat while under the influence of alcohol or drugs.
- 3.17. Smoking while on the boat.

4. PERMITTED ITEMS and ACTIONS

- 4.1. Taking a bag on board containing:
 - basic hand tools
 - adhesive tape
 - line (elastic or otherwise of 4mm diameter or less)
 - telltale material
 - handheld compass
 - shackles and device pins
- 4.2. The use of the contents of the bag to:
 - prevent fouling of lines, sails and sheets
 - attach tell tails
 - prevent sails being damaged or falling overboard
 - mark control settings
 - make minor repairs

5. MANDATORY ITEMS and ACTIONS

The following shall be mandatory:

- 5.1. To sign out the allocated boat on the Sign Out form and the completion of a written damage form before leaving a boat and submitting it to BYS, even if no damage or loss is recorded.
- 5.2. At the end of each sailing day:
 - Rolling, bagging and placement of the sails as directed.
 - Leaving the boat in the same state of cleanliness as when first boarded that day, remove all rubbish and remove all tape marks.
 - Placing the boat covers back on and hosing down the boat at the end of each day.
- 5.3. Compliance with any regulations, including speed restrictions and navigation marks, while leaving or returning to the berth or mooring.
- 5.4. Infringement of items 5.1 and 5.2 will be considered as damage and the cost of rectification will be deducted from the damage deposit.
- 5.5. Wearing an approved buoyancy aid at all times while on-board the boats.

6. EQUIPMENT LIST

- 6.1. Sails and equipment:
 - mainsail and set of battens
 - 1 bucket
 - 1 spinnaker
 - 1 set spinnaker sheets
 - tiller extension
 - 1 jib
 - 1 set jib sheets
 - 1 red protest flag
 - safety equipment to Cat. 7