

## BYS Women's Sportsboat Sprint Series 21 - 22 March 2026

# SAILING INSTRUCTIONS

The Organising Authority (OA) is Blairgowrie Yacht Squadron (BYS).

### 1. RULES

- 1.1. The racing will be governed by:
  - a the rules as defined in the 2025-2028 Racing Rules of Sailing (RRS).
  - b The prescriptions and special regulations of Australian Sailing (AS), as may be amended [DP],
- 1.2. If there is conflict in or between rules or regulations (other than RRS), Notice of Race or Sailing Instructions, the Sailing Instructions shall take precedence. This changes RRS 63.7.

### 2. NOTICE TO COMPETITORS

- 2.1. The Official Notice Board is located online on the regatta page of the BYS website <https://bys.asn.au/womens-sportsboat-regatta-2026/>

### 3. CHANGES TO SAILING INSTRUCTIONS

- 3.1. Any change to the Sailing Instructions will be posted on the Official Notice Board at least two hours before the scheduled time for the first race on the day it will take effect and signalled in accordance with RRS Race Signals. Any change to the time of the first warning signal for the commencement of the day's racing schedule will be posted by 1900 hrs on the day before the changes will take effect.

### 4. SIGNALS MADE ASHORE

- 4.1. Signals made ashore will be displayed on the eastern-most halyards of the BYS yardarm in front of the clubhouse.
- 4.2. When flag AP is displayed ashore, '1 minute' is replaced with 'not less than 30 minutes' in the race signal AP. This changes Race Signals AP.

### 5. SCHEDULE OF EVENTS

- 5.1. Registration, racing and social schedule:

Date	Time	Event
<b>Saturday 21 March</b>	1000 – 1015 hrs	Registration
	1015 hrs	Information Briefing (Racing Lounge)
	1200 hrs	Race Session – first warning signal
	From 1800	Live music, dinner is available in the clubhouse, at menu prices.
<b>Sunday 22 March</b>	1030 hrs	Race Session – first warning signal
	ASAP after last race	Presentation

- 5.2. There is no maximum number of races scheduled. The start times for the second and succeeding races on each day will be as soon as practical after the conclusion of the preceding race, at the discretion of the Race Officer.
- 5.3. Flags "AP" over "A" will be flown on the Finish Boat at the end of the day which will indicate that there will be no more racing for that day.
- 5.4. On the last scheduled day of racing, no warning signal will be made after 1500 hrs.

## 6. CLASS FLAGS

- 6.1. The class flag shall be a white flag with the J70 class logo.

## 7. RACE AREAS

- 7.1. The racing area will be approximately 0.6 – 1.5nm to the northeast of the BYS Clubhouse over an area known as the Sorrento Channel and the South Sand, refer to Attachment A.

## 8. THE COURSES

- 8.1. The diagrams and associated notes in Attachment B show the course and marks, the order in which marks are to be passed, and the side on which each mark is to be left.
- 8.2. If only one of either Mark 1S, 1P, 4S or 4P are not in place, boats shall round the single mark 1 or 4 to port.

## 9. MARKS

- 9.1. The Start and Finish pin shall be a black and white checked inflatable cylindrical buoy.
- 9.2. Marks 1S, 1P, 4S, 4P will be orange inflatable truncated conical buoys.
- 9.3. Replacement mark will be a pink inflatable truncated conical buoy.

## 10. THE START

- 10.1. Races shall be started using a 3-minute starting sequence. This changes RRS 26.

Signal	Flag	Sound	Minutes before start signal
Warning	Class Flag	1 sound	3
Preparatory	Preparatory flag	1 sound	2
One- minute	Preparatory flag removed	1 long sound	1
Starting	Starting Class flag removed	1 sound	0

- 10.2. The starting line shall be between a staff displaying an orange flag on the race committee boat at the starboard end and the course side of the port-end starting mark.
- 10.3. To alert boats that a race starting sequence will begin soon, an orange flag will be flown from the race committee vessel with one sound signal at least three minutes before a warning signal is made.
- 10.4. A boat starting later than 4 minutes after her signal will be scored Did Not Start without a hearing.

## 11. CHANGE TO THE NEXT LEG OF THE COURSE

- 11.1. The race committee may change the position of the next mark in accordance with RRS 33, subject to the amendment's details in this clause.
- 11.2. When the next leg of the course is changed, the race committee shall lay a new mark as described in SI 9.3 and remove the original mark(s) as soon as practicable.
- 11.3. If the position of Mark 1 is changed, Marks 1S and 1P may be replaced by a new single Mark 1 and boats will round the new Mark 1 and proceed directly to Marks 4S/4P or the finishing line, as appropriate.

## 12. THE FINISH

- 12.1. A blue flag flown from the race committee boat will indicate the finishing boat is on station for the finish.
- 12.2. The finishing line will be between a staff displaying a blue flag on the race committee boat and the course side of the starboard-end finish mark.

12.3. The race committee boat will be on the port end of the line when viewed from marks 1S and 1P.

### 13. PROTESTS

- 13.1. Protest forms will be available from the BYS Sailing Office.
- 13.2. The protest time limit will be 60 minutes after the last boat has finished the last race of the day.
- 13.3. Notices will be posted within 30 minutes for the protest time limit expiry to inform competitors of hearing win which they are parties or named as a witness.

### 14. TIME LIMITS AND TARGET TIMES

14.1. The time limits and target times are as follows:

Race Time Limit	Mark 1 Time Limit	Race Target Time	Finishing Window
25 minutes	10 minutes	12 minutes	5 minutes

- 14.2. A boat that fails to finish within the Time Limit shall be scored DNF. This changes RRS 35.
- 14.3. The finish window will be 5 minutes. Closure of the finish window will be indicated by lowering of the blue flag on the finish boat at 5 minutes after the first boat sails the course and finishes, or if all boats have finished, after the last boat has finished (whichever is sooner). On closure of the finish window, all boats not yet finished are to return to the starting area for the next race if one is scheduled.
- 14.4. If no boat has rounded Mark 1 within 10 minutes of the start signal, the race may be abandoned.
- 14.5. Failure to meet the target time will not be grounds for redress. This changes rule 61.4 (b).
- 14.6. Boats that are still racing at the closure of their finish window (but within the Race Time Limit) will be given an allocated place based on their position in the fleet at the time. This changes rules 35, A4 and A5.

### 15. PROTESTS

- 15.1. Protest forms are available via the ONB and at the regatta office. Protests and requests for redress or reopening a hearing shall be delivered there within the appropriate time limit.
- 15.2. The protest time limit is 60 minutes after the last boat has finished the last race of the day or the race committee signals no more racing today, whichever is later.
- 15.3. Notices shall be posted on the ONB no later than 30 minutes after the protest time limit to inform competitors where and when there is a hearing in which they are parties to a protest or named as a witness.

### 16. SCORING

- 16.1. The Low Point System, RRS Appendix A, will apply.
- 16.2. Two (2) races are required to be completed to constitute a series.
- 16.3. When fewer than five races (5) have been completed, a boat's series score will be the total of her race scores.
- 16.4. When between five (5) and eight (8) races have been completed, a boat's series score will be the total of her races scores excluding her worst score.
- 16.5. When more than nine (9) races have been completed, a boat's series score will be the total of her race scores excluding her 2 worst scores. This changes RRS Appendix A2.

### 17. SAFETY REGULATIONS

- 17.1. The sign on/sign off facility shall be via the online regatta system. Skippers will receive a unique sign on/off link at the regatta registration.
- 17.2. All boats shall SIGN ON and include all crew member details 30 minutes or more before the first scheduled warning signal each day.
- 17.3. All boats shall SIGN OFF at the earliest possible time after completion of the race session, but not later than the end of the protest time limit. A boat which retires or does not intend to continue racing is required to sign off immediately on return to the shore.
- 17.4. Boats failing to sign on in accordance with SI 20.2 shall be scored with a twenty percent (20%) scoring penalty calculated pursuant to RRS 44.3 (c) unless the Jury decides differently, applied without a hearing to a boat's first valid race of the day. This change is added to RRS A5.1.

- 17.5. Boats failing to sign off in accordance with SI 20.3 shall be scored with a twenty percent (20%) scoring penalty calculated pursuant to RRS 44.3 (c) unless the Jury decides differently, applied without a hearing to a boat's last valid race of the day. This change is added to RRS A5.1.
- 17.6. No races shall be started or continued if the average wind (measured over the previous 10 minutes) is less than 5 knots or more than 25 knots.
- 17.7. Limitations on the crew: The crew shall consist of four or more persons. The number of crew shall not be changed during the event.
- 17.8. Crew positioning:
- a Except for momentary sail handling and/or repair needs, crew shall remain aft of the mast while on deck.
  - b Crew shall not stand or lean out over the cockpit safety lines or stern rails to promote roll tacking, roll gybing or to increase hiking leverage, or for any other reason, other than for temporary needs to make repairs or correct problems.
  - c Not more than two crew may have their legs outboard of the sheer line.
  - d When tacking or gybing, crew shall not hand, push or pull on the shrouds, mast, cockpit safety lines, stanchions or any other item to promote the manoeuvre.
  - e Except in a medical emergency or momentary sail handling and/or repair needs, crew heads and shoulders shall remain above deck.
- 17.9. Except for when momentarily changing clothing, all crew must wear a lifejacket from the first warning signal until the end of racing for the day.

## **18. SUPPORT BOATS [DP]**

- 18.1. Visiting coach or support vessels may be berthed at BYS for the duration of the regatta by prior application with the Sailing Office and subject to availability. Additional fees may apply.
- 18.2. Coaches and support boats must remain well away from the start area, the course area and racing areas (at a minimum of 100m) from the time of the first warning signal each day until racing has concluded for the day or while flag "AP" is displayed.
- 18.3. Competitors shall have no communication with boats and boats shall not be tied to coach or support boats from the first warning signal each race day until racing has been concluded for the day.
- 18.4. Support boats shall make themselves available at all times while afloat to assist the Race Committee in the case of an emergency or rescue, as directed in person by the relevant race officer, or via VHF radio or as signalled by the flying of code flag V on the start boat. Refer to RRS 37.

## **19. OFFICIAL BOATS**

- 19.1. Official boats will be marked with a BYS Burgee.

## **20. RADIO COMMUNICATION**

- 20.1. All boats shall carry a marine band VHF radio capable of receiving and transmitting Marine VHF channels. The radio shall be switched on at all times and tuned to the correct race committee frequency. The race committee intends to monitor VHF radio and communicate race information to competitors. [DP]
- 20.2. Boats are required to use the VHF radio to report retirement from racing and may use the radio to request assistance in an emergency. No other transmissions are permitted by competing boats during each racing day from their warning signal until the completion of their race.
- 20.3. The race committee may use VHF radio to advise competitors of general matters relating to racing, for individual and general recalls, or for emergency or safety purposes.
- 20.4. The use of mobile phones or any device capable of sending and/or receiving external electronic communications and/or connecting to the internet is prohibited after the first warning signal on each race day until the boat has finished racing, except as provided in clause 23.1 or in an emergency threatening the safety of a crew member of the floatation of the boat.
- 20.5. The radio frequency for this regatta will be VHF Ch 69.
- 20.6. The BYS tower call sign is "Blairgowrie"
- 20.7. The race committee boat call sign is "Regatta Start."

## **21. PRIZES**

- 21.1. Prizes will be awarded to the first three overall places.

## **22. RISK STATEMENT**

- 22.1. RRS 3 states: "The responsibility for a boat's decision to participate in a race or to continue to race is hers alone." By participating in this event each competitor agrees and acknowledges that sailing is a potentially dangerous activity with inherent risks. These risks include strong winds and rough seas, sudden changes in weather, failure of equipment, boat handling errors, poor seamanship by other boats, loss of balance on an unstable platform and fatigue resulting in increased risk of injury. Inherent in the sport of sailing is the risk of permanent, catastrophic injury or death by drowning, trauma, hypothermia or other causes.
- 22.2. All those taking part in these races are reminded of their obligations as set out in the AS Special Regulations clause 1.02 'Responsibility of the Person in Charge'. The safety of a boat and its crew is the sole and inescapable responsibility of the person in charge who shall do their best to ensure that the boat is fully found, thoroughly seaworthy and manned by an experienced crew who have undergone appropriate training and are physically fit to face bad weather. They must be satisfied as to the soundness of the hull, spares, rigging, sails and all gear. They shall ensure that all safety equipment is properly maintained and stowed and that the crew know where it is kept and how it is to be used. They shall also nominate a person to take over the responsibilities of the person in charge in the event of his incapacitation.

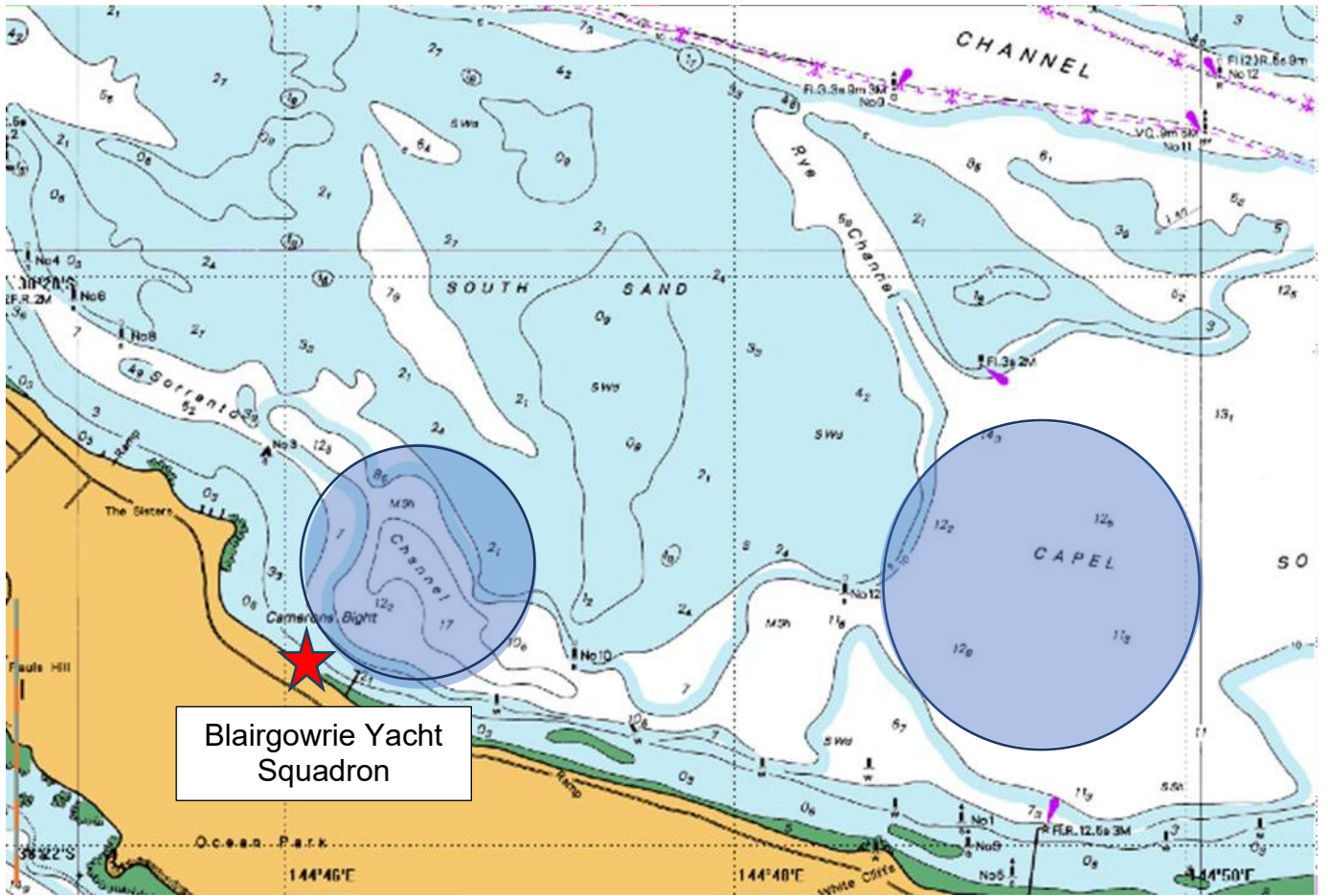
## **23. INSURANCE**

- 23.1. Each participating boat shall be insured with valid third-party property and personal liability insurance with a minimum cover of \$10,000,000.00 per incident or the equivalent. All insurance cover shall be maintained for the period of racing. Supplied boats will include the appropriate insurance cover.

## **24. FURTHER INFORMATION**

BYS Sailing Office: (03) 5925 9620 [sailing@bys.asn.au](mailto:sailing@bys.asn.au)

**ATTACHMENT A – RACING AREAS**



**ATTACHMENT B – COURSE**

