



BLAIRGOWRIE YACHT SQUADRON



2025 RS Aero Victorian Championships

SAILING INSTRUCTIONS

1 – 2 March 2025

**Organising Authority
BLAIRGOWRIE YACHT SQUADRON
2900 Point Nepean Road, Blairgowrie 3942, Victoria**

The notation '[DP]' in a rule in the NOR and SI's means that the penalty for a breach of that rule may, at the discretion of the protest committee, be less than disqualification. This changes RRS 64.1.

The notation '[NP]' denotes that a breach of this rule will not be grounds for protest by boat. This changes RRS 62.1(a)

The notation '[SP]' denotes a rule for which a standard penalty will be applied by the race committee without a hearing. This changes RRS 63.1, Appendix A4 and Appendix A5.

1 RULES

1.1 The racing will be governed by:

- the rules as defined in the 2025-2028 Racing Rules of Sailing (RRS), and
- the rules of the RS Aero class association

1.2 The Australian Sailing Special Regulations Part 2, Off the Beach Boats, shall apply.

1.3 Spot checks may be conducted during the event to verify compliance with these rules and regulations.

2 NOTICES TO COMPETITORS

2.1 The Official Notice Board is located online on the [official regatta noticeboard](https://bys.asn.au/2025-rs-aero-victorian-championships/) (ONB) available on the BYS Regatta webpage here: <https://bys.asn.au/2025-rs-aero-victorian-championships/>

3 CHANGES TO SAILING INSTRUCTIONS

3.1 Any change to the Sailing Instructions will be posted on the Official Regatta Notice Board not less than one hour before the race or races affected, except that any change to the schedule of races will be posted by 1900hrs on the day before it will take effect.

4 SIGNALS MADE ASHORE

4.1 Signals made ashore will be displayed above the class flag flown from one of the eastern halyards of the BYS Yardarm in front of the clubhouse.

4.2 When flag AP is displayed ashore, '1 minute' is replaced with 'not less than 30 minutes' in the race signal AP. This changes Race Signals AP.

5 SCHEDULE OF EVENTS and RACES

5.1 Schedule

Date	Event	Time
Saturday 1 Mar 2025	Registration	0900-1030 hrs.
Saturday 1 Mar 2024	Competitors Briefing	1030 hrs.
Saturday 1 Mar 2025	Race Session #1	Warning 1230 hrs
Sunday 2 Mar 2025	Race Session #2	Warning 1100 hrs
Sunday 2 Mar 2025	Drinks and prize presentation	ASAP After racing

5.2 A maximum of four races shall be sailed in any one session.

5.3 Flag "L" flown on the Finish vessel will indicate that another race will be started following completion of the current race.

5.4 On the last scheduled day of racing, no warning signal will be made after 1600 hours.

6 CLASS FLAG

6.1 The RS Aero class flags will be:

- RS Aero 5: RS Aero insignia and number 5 in black on a blue background
- RS Aero 6: RS Aero insignia and number 6 in black on a purple background
- RS Aero 7: RS Aero insignia and number 7 in black on a yellow background

7 RACING AREA

- 7.1 Attachment A shows the Race Area to the north of BYS.

8 THE COURSES

- 8.1 The diagrams and associated notes in Attachment B show the courses and marks, the order in which marks are to be passed, and the side on which each mark is to be left.
- 8.2 Marks 1, 2, 3, 4 and 5 are to be rounded to port.
- 8.3 No later than the warning signal, the race committee vessel will indicate the course to be sailed by displaying the course code and may display the approximate magnetic compass bearing from the starting line to the top mark.

9 MARKS

- 9.1 The pin end of the start line will be a green inflatable cylindrical mark.
- 9.2 The finish mark on the port side of the finish boat will be a black and white inflatable cylindrical mark.
- 9.3 Marks 1, 2, 3, 4 and 5 will be orange inflatable conical marks.
- 9.4 Replacement or relocated marks as provided for in section 11.2 will be a pink inflatable conical mark.

10 THE START

- 10.1 To alert boats that a race starting sequence will begin soon, an orange flag will be flown from the race start vessel with one sound signal at least five minutes before a warning signal is made.
- 10.2 The starting line will be between a staff displaying an orange flag on the race start vessel at the starboard end and the course side of the port end starting mark.
- 10.3 [DP] Boats whose warning signal has not been made shall avoid the starting area during the starting sequence for other classes. The starting area is defined as a rectangle 50 meters from the starting line and marks in all directions.
- 10.4 A boat that does not start within 4 minutes after her starting signal will be scored Did Not Start without a hearing. This changes RRS A4 and A5.

11 CHANGE TO THE NEXT LEG OF THE COURSE

- 11.1 The race officer may change the position of the next mark in accordance with RRS 33, subject to the amendments detailed in this clause.
- 11.2 When the next leg of the course is changed, the race committee shall lay a new mark as described in SI 9.4 and remove the original mark as soon as practicable.

12 THE FINISH

- 12.1 A blue flag flown from the finish vessel will indicate the finishing vessel is on station for the finish.
- 12.2 The finishing line will be between a staff displaying a blue flag on the race committee vessel and the course side of a black and white chequered inflatable cylindrical mark positioned on the port side of the finish boat.

13 TIME LIMITS AND TARGET TIMES

- 13.1 Time limits and target times are as follows:

Class	Race Target Time	Race Time Limit	Finishing window
RS Aero 5, 6 & 7	40 minutes	70 minutes	15 minutes

- 13.2 There are no time limits for reaching the first mark.
- 13.3 A boat that fails to finish within the Time Limit may be scored DNF. This changes RRS 35.
- 13.4 Closure of the finish window will be 15 mins after the first boat sails the course and finishes, or after the last boat has finished (whichever is sooner). On closure of the finish window, all boats not yet finished are to return to the starting area for the next race if one is scheduled.
- 13.5 Failure to meet the target time will not be grounds for redress. This changes rule RRS 61.4(b).
- 13.6 At the race officer's discretion, boats that are still racing at the closure of their finish window may be given an allocated place based on their position in the fleet at the time. This changes rules RRS 35, A4 and A5.

14 PROTESTS AND REQUESTS FOR REDRESS

- 14.1 Protest forms are available at the regatta office. Protests and requests for redress or reopening a hearing shall be delivered there within the appropriate time limit.
- 14.2 The protest time limit is 60 minutes after the last boat has finished the last race of the day or the race committee signals no more racing today, whichever is later.
- 14.3 Notices shall be posted no later than 30 minutes after the protest time limit to inform competitors of hearings in which they are parties or named as witnesses.
- 14.4 Hearings will be held in the protest room, located in the Commodores Lounge on the upper level of the BYS clubhouse, and will commence at the time posted.

15 ARBITRATION & POST RACE PENALTY

- 15.1 Appendix T shall apply.

16 [NP] SAFETY REGULATIONS

- 16.1 Sign On and Sign Off: All boats must "sign on" before leaving the shore and "sign off" as soon as practicable after returning to shore at the completion of the session's racing.
- 16.2 The sign on period for each Class will close at the warning signal being displayed the first race for that session on that day.
- 16.3 The sign off period for each Class will close 60 minutes after the last boat has completed the last race of the session.
- 16.4 The Sign On/Sign Off sheets shall be available in the Junior Lounge.
- 16.5 Failure to Sign On, Sign Off in accordance with SI 16.1, 16.2 and 16.3 will result in that boat receiving a 5 point penalty without a hearing. However, no boat shall be scored worse than DSQ. For boats failing to sign on, this penalty will be applied to the first race of the session. For boats failing to sign off, this penalty will be applied to the last race of the session. If there is only one race in a session, a boat will only receive one penalty. This changes RRS rules A4 and A5.

17 [DP] REPLACEMENT OF EQUIPMENT

- 17.1 Substitution of damaged or lost equipment will not be allowed unless authorised by the race committee. Requests for equipment substitution shall be made in writing to the race officer at the first reasonable opportunity.

18 SUPPORT BOATS

- 18.1 Coaches and support boats must remain at least 100m outside the start area, the course and all racing areas from the time of the first warning signal each day until racing has concluded for that day.
- 18.2 Competitors shall have no communication with, and boats shall not be tied to coach or support boats from the first warning signal each race day until racing has been concluded for the day.
- 18.3 If called upon by the race officer, support boats must assist in an emergency as directed, and must maintain a watch on VHF Channel 69.

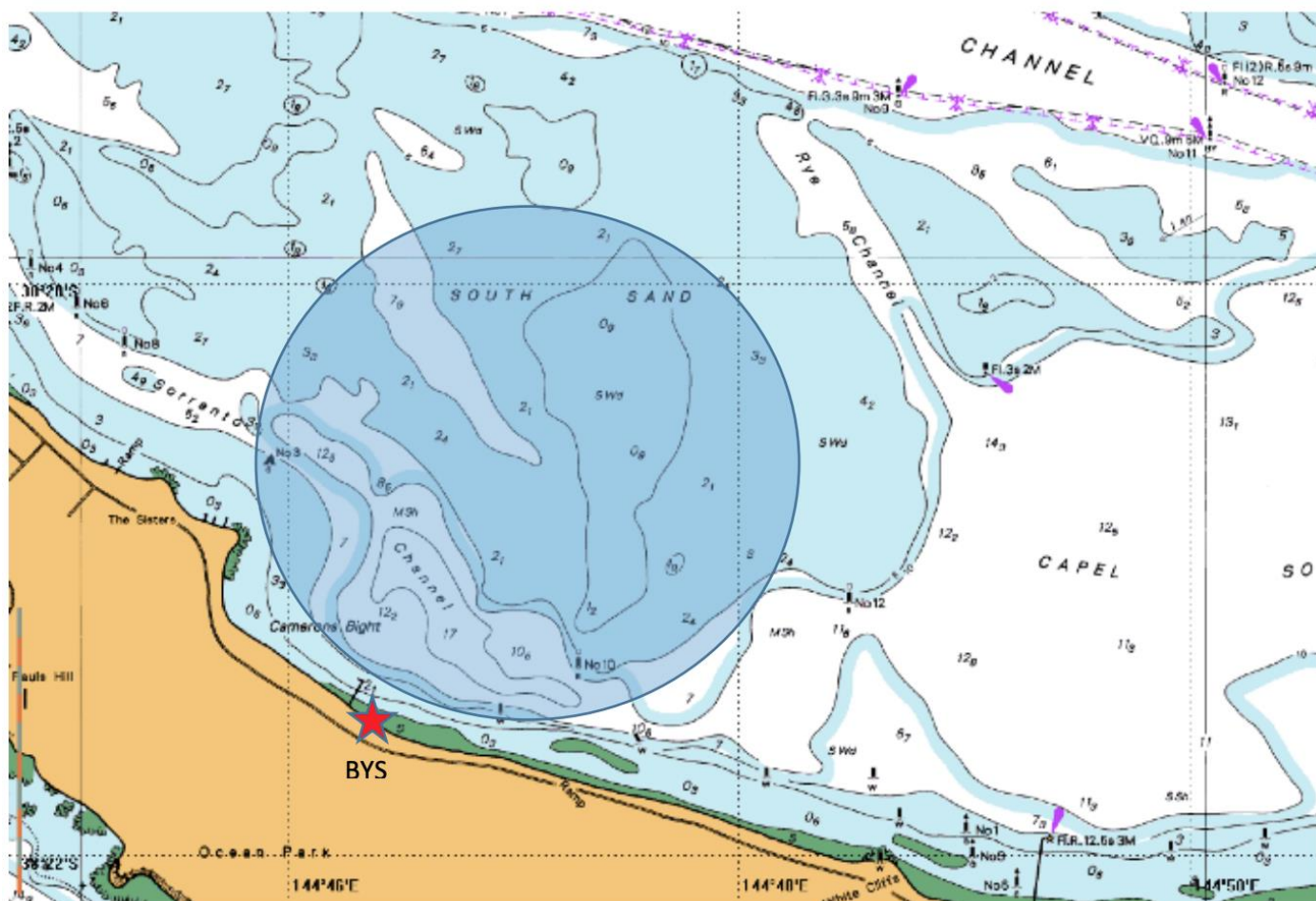
19 TRASH DISPOSAL

19.1 Trash may be placed aboard support or official boats.

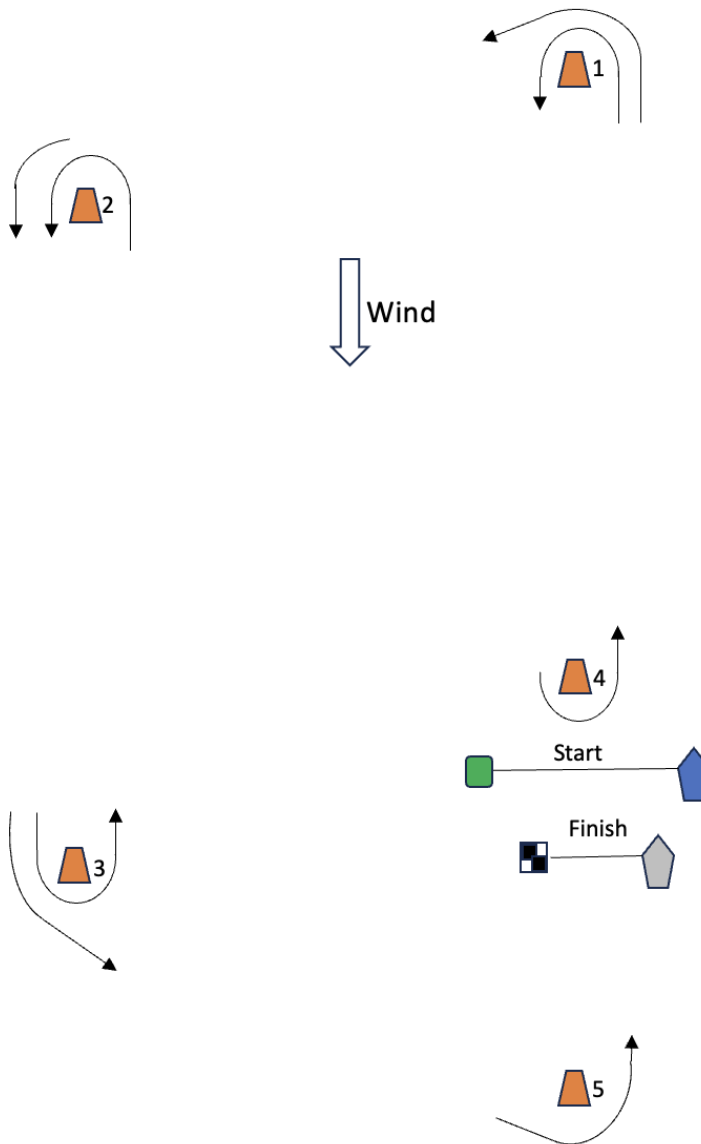
20 DISCLAIMER OF LIABILITY

20.1 Competitors participate in the regatta entirely at their own risk. See RRS 3, Decision to Race. The organizing authority will not accept any liability for material damage or personal injury or death sustained in conjunction with or prior to, during, or after the regatta.

Attachment A – Racing Area



Attachment B- Courses



Course Descriptions

Course Code	Course
I2	1, 4, 1, 2, 3, 5, FINISH
O2	1, 2, 3, 2, 3, 5, FINISH