



BLAIRGOWRIE YACHT SQUADRON

FAMILY | FRIENDSHIP | SAILING

PETERSVILLE REGATTA

SAILING INSTRUCTIONS 2025

PETERSVILLE REGATTA 2025 SAILING INSTRUCTIONS

27 – 30 December 2025

Organizing Authority: Blairgowrie Yacht Squadron, 2900 Point Nepean Road, Blairgowrie 3942 Victoria AUSTRALIA

1. RULES

- 1.1 The regatta will be governed by the rules as defined in the Racing Rules of Sailing 2025–2028 (RRS).
- 1.2 The prescriptions and special regulation of Australian Sailing Part 1 Category 6 will apply.
- 1.3 All boats shall comply with all relevant legislation and the requirements of all authorities, particularly with respect to the avoidance of commercial shipping.
- 1.4 The AMS rules apply for those who have entered an AMS division.
- 1.5 The ORC rules apply for those who have entered the ORCc division.
- 1.6 The notation '[DP]' in the NOR or SI means that the penalty for a breach of that section may, at the discretion of the Protest Committee, be less than disqualification.
- 1.7 Boats aground. Permission as per RRS 42.3(i) applies.
- 1.8 Blairgowrie Safe Boat Harbour Rules apply for the period of the regatta. These rules can be viewed at www.petersvilleregatta.com.au/harbour_rules/

2. NOTICES TO COMPETITORS

- 2.1 The Official Notice Board (ONB) is located online at <https://sailingresults.net/sa/notice/?ID=82121> and can be accessed via the [Petersville Regatta website](#).
- 2.2 Advice of notices may be sent via SMS to the mobile number registered at the time of entering the regatta. SMS advice will be an abbreviated version of the actual notice to which it refers. Competitors are advised to refer to the full notice, which always takes precedence.
- 2.3 Changes to a boat's mobile number used for SMS advice shall be notified to the BYS Sailing Office before the close of registration.

3. CHANGES TO SAILING INSTRUCTIONS

- 3.1 Any change to the Sailing Instructions will be posted on the Official Notice Board at least 2 hours before the scheduled time for the first race on the day it will take effect and signaled in accordance with RRS Race Signals, except that any change to the schedule of races will be posted by 2100 hours on the day before it will take effect.

4. SIGNALS MADE ASHORE

- 4.1 Signals made ashore will be displayed from one of the western halyards of the BYS Yardarm in front of the clubhouse.
- 4.2 When flag AP is displayed ashore, '1 minute' is replaced with 'not less than 45 minutes' in the race signal AP. This changes RRS Race Signals AP.
- 4.3 When flag Y is displayed either ashore or on a Race Committee Vessel, RRS 40 applies at all times while afloat. This changes the RRS 40.2.
- 4.4 When a signal is displayed over a Division Flag(s), it applies to that division(s) only.

5. SCHEDULE OF RACES

5.1 Cruising Divisions

Date	All Cruising Divisions					
	Warning Signal for first division	Race	Course Area	Course Type	Start Area	Finish Area
27 Dec	From 1600	1	Blairgowrie	Twilight Race	Refer Attachment B	BYS Club
28 Dec	From 1130	2	Blairgowrie	Long Course	Refer Attachment B	BYS Club
29 Dec	From 1130	3	Blairgowrie	Short Course	Refer Attachment B	BYS Club
	From 1600	4	Blairgowrie	Twilight Race	Refer Attachment B	BYS Club
30 Dec	From 1130	5	Blairgowrie	Short Course	Refer Attachment B	BYS Club

5.2 Sportsboat Division

Date	Sportsboat Divisions					
	Warning Signal for first division	Race	Course Area	Course Type	Start Area	Finish Area
27 Dec	From 1600	1	Blairgowrie	Twilight Race	Refer Attachment B	BYS Club
28 Dec	From 1145	2, 3	Blairgowrie	Windward / Leeward	Refer Attachment B	Course area
29 Dec	From 1145	4, 5	Blairgowrie	Windward / Leeward	Refer Attachment B	Course area
	From 1600	6	Blairgowrie	Twilight Race	Refer Attachment B	BYS Club
30 Dec	From 1145	7, 8	Blairgowrie	Windward / Leeward	Refer Attachment B	Course area

5.3 On the last day of the regatta, no warning signal will be made after 1300 hours.

6. DIVISION FLAGS & RACING PENNANTS

6.1 Division Identification flags may be flown from the BYS Yardarm or from an Official Boat under other Race Signal Flags to signify the instruction relates to a specific division.

6.2 [DP] Individual Racing Pennants may be provided to some or all divisions. If provided, they must be flown from the backstay or running backstay at all times when racing. For boats with no backstay or runner, the Racing Pennant must be flown from a position as close to the stern of the boat as possible and also be visible to other boats or committee vessels.

6.3 The Division flag and Racing Pennants are as follows:

Division	Division flag	Racing Pennant
Keelboat Cruising (Spin) – Div 1	Green/Black	Green
Keelboat Cruising (Spin) – Div 2	Yellow/Black	Yellow
Keelboat Cruising (Spin) – Div 3	White/Black	White
Sportsboats – Div 5	Purple	Purple

7. RACING AREAS

7.1 **Attachment A** shows the location of the Start Area for all races.

7.2 **Attachment B** shows the **Petersville Finish Line** for all races EXCEPT the Sportboat Windward / Leeward courses.

7.3 **Attachment C** shows the location of BYS Club Marks.

7.4 All illustrations are not necessarily to scale.

8. THE COURSES

- 8.1 The diagrams, tables and associated notes in Attachments D & E show the courses and marks, the order in which marks are to be passed, and the side on which each mark is to be left.
- 8.2 No later than the warning signal, the Race Committee Vessel will indicate the course to be sailed by displaying the corresponding numeral pennants.
- 8.3 The appropriateness of the course selected for any given race when considered against a boat's draft will not be grounds for redress by a boat. This changes RRS 61.1 (a).
- 8.4 Cruising Division courses near the South Channel include channel marks as passing marks. Notwithstanding the need to comply with each passing mark, competitors should avoid entering the South Channel when approaching or leaving the Course Area.

9. MARKS

- 9.1 Marks are described in **Attachment D & E**.

10. THE START

- 10.1 The starting line will be between a staff displaying an orange flag on the Race Committee Vessel at the starboard end and the port end mark.
- 10.2 To alert boats that a race or sequence of races will begin soon, an orange flag will be displayed from the Race Committee Vessel with one sound signal at least 5 minutes before a warning signal is displayed.
- 10.3 [DP] Boats whose warning signal has not been made shall avoid the starting area during the starting sequence for other divisions.
- 10.4 A boat starting later than 5 minutes after her starting signal will be scored Did Not Start without a hearing. This changes RRS A4 and A5.
- 10.5 For the Keelboat Cruising Divisions, the sequence in which each division will start will be determined by the Race Officer and the appropriate division flag will be flown. Competitors should not assume that the sequence will be consistent throughout the regatta.

Keelboat Cruising Divisions and All Division Twilight Race Starts

- 10.6 A **Pink** inflatable mark may be laid approximately 0.25–0.5 nm to windward of the starting line and, if laid, will act as a Turning Mark prior to the first fixed mark of the course.
- 10.7 The Turning Mark will be left to either port or starboard as indicated by either a solid red or solid green flag flying from the Race Committee Vessel.

11. THE FINISH

- 11.1 For all courses except Sportsboat Windward-Leeward courses, the finishing line will be between the Day-Glo Orange Post located on the Blairgowrie Yacht Squadron Tower and the course side of the Petersville Finish Mark. When finishing, boats shall pass between the Red Navigation Pile adjacent to the east of the Blairgowrie Safe Harbour Wall and the Petersville Finish Mark. Refer Attachment B.
- 11.2 For Sportsboat Windward / Leeward courses, the finishing line will be between a staff displaying a blue flag on the Race Committee Vessel at the port end and the starboard-end finishing mark.
- 11.3 [DP] Once a boat has finished, it shall not re-cross her finishing line.

12. PENALTY SYSTEM

- 12.1 RRS 44.1 is changed so that the Two-Turns Penalty is replaced by a One-Turn Penalty.

13. TIME LIMITS

13.1 Time limits for the first boat in each division to finish are as follows:

Division	Course Type	Time Limit	Finishing Window
Keelboat Cruising (all) & Sportsboats	Twilight Race 1	1930 EDST	60 minutes
Keelboat Cruising (all)	Long Course Race 1	1800 EDST	90 minutes
Keelboat Cruising (all)	Short Courses	180 minutes	60 minutes
Keelboat Cruising (all) & Sportsboats	Twilight Race 2	1930 EDST	60 minutes
Sportsboats	Windward / Leeward	90 minutes	20 minutes

13.2 If no boat has passed the first mark of the course within 45 minutes after her starting time, the race will be abandoned. This changes RRS 32.1. The Turning Mark used in Cruising Divisions and Twilight races is not considered the first mark for the purposes of this section.

13.3 Boats failing to finish within their division finishing window will be scored Did Not Finish without a hearing. This changes RRS 35, A4 and A5.

14. PROTESTS AND REQUESTS FOR REDRESS

14.1 Protest forms are available via the Official Notice Board facility or at the Regatta Office.

14.2 For each division, the protest time limit is 60 minutes after the last boat has finished the last race of the day, or the Race Committee signals no more racing today, whichever is later.

14.3 Notices shall be posted on the Official Notice Board no later than 30 minutes after the protest time limit to inform competitors of hearings in which they are parties or named as witnesses.

14.4 Hearings will be held in the protest room, located in the Commodore's Lounge on the upper level of the BYS Clubhouse, and will commence at the time posted.

14.5 Notices of protests by the Race Committee or Protest Committee will be posted to inform boats under RRS 60.2.

14.6 [DP] Breaches of SIs 6.2, 10.3, 10.5, 11.3, 18, 20, 24 and 27 will not be grounds for a protest by a boat. This changes RRS 60.1.

14.7 On the last scheduled day of racing, a request for reopening of a hearing shall be delivered:

- (a) within the protest time limit if the requesting party was informed of the decision on the previous day;
- (b) no later than 30 minutes after the requesting party was informed of the decision on that day.

14.8 On the last scheduled day of racing, a request for redress based on a Protest Committee decision shall be delivered no later than 30 minutes after the decision was posted. This changes RRS 63.7 (b).

15. ARBITRATION

15.1 RRS Appendix T shall apply.

16. HANDICAPS

16.1 [NP] The decision of the Organizing Authority or their representative on any handicap matter will be final and will not be grounds for requests for protest. This alters RRS 60.1.

17. SCORING

17.1 Three races are required to be completed to constitute a series.

17.2 When fewer than four races have been completed, a boat's series score will be the total of her race scores.

17.3 When four or more races have been completed, a boat's series score will be the total of her race scores excluding her worst score.

18. SAFETY REGULATIONS

- 18.1 The sign-on/sign-off facility shall be via the online regatta system. Skippers will receive a unique sign-on/off link at the regatta registration.
- 18.2 All boats shall SIGN-ON and include all crew member details 30 minutes or more before the first scheduled warning signal each race session.
- 18.3 All boats shall SIGN-OFF at the earliest possible time after completion of the race session, but not later than the end of the protest time limit. A boat which retires or does not intend to continue racing is required to sign off immediately on return to the shore. Boats should advise the Race Committee by VHF if returning to shore from the race area.
- 18.4 Boats failing to sign-on or sign-off will result in that boat receiving a 5 point penalty without a hearing. However, no boat shall be scored worse than DSQ. For boats failing to sign-on, this penalty will be applied to the first race of the session. For boats failing to sign-off, this penalty will be applied to the last race of the session. If there is only one race in a session, a boat will only receive one penalty. This changes RRS A4 and A5.
- 18.5 [DP] While racing, no anchors shall be carried on deck forward of the bow or with any part protruding outboard. Boats not complying shall be scored DSQ without a hearing. This changes RRS A5.1.
- 18.6 For Keelboat Cruising Division Long Courses (10, 11, 12 & 14) at marks noted ¥, boats shall log immediately, their rounding by SMS text stating boat name, sail number and time of rounding to **0407 312 336**.

19. AVOIDANCE OF COMMERCIAL SHIPPING

- 19.1 Marine regulations require that boats avoid commercial shipping. Boats that find themselves in danger of interfering with commercial shipping may use their engine to avoid interference and will not be penalized under RRS 42, provided that:
- it is used only as necessary to avoid the commercial shipping in question, and;
 - no advantage is gained through its use, and;
 - a declaration containing a complete description of the circumstances is submitted to the Race Committee within the protest time limit.
- This changes RRS 42.

20. REPLACEMENT OF CREW OR EQUIPMENT

- 20.1 Substitution of helmspersons or any equipment will not be allowed unless authorized by the Race Committee. Requests for substitution shall be made at the first reasonable opportunity via the online Official Noticeboard facility.

21. MANUAL POWER

- 21.1 RRS 52 is amended to permit powered winches.

22. EQUIPMENT AND MEASUREMENT CHECKS

- 22.1 [DP] A boat or equipment may be inspected at any time for compliance with the class rules and/or the sailing instructions. The Race Committee may instruct a boat to proceed immediately to a designated area for inspection by an inspector or measurer. Any boat so instructed shall promptly comply with any such instruction.

23. OFFICIAL BOATS

- 23.1 Official boats may be marked with a BYS Burgee.

24. SUPPORT BOATS

- 24.1 [DP] Team leaders, coaches and other support personnel shall stay outside areas where boats are racing from the time of the preparatory signal for the first division to start until all boats have finished or retired or the Race Committee signals a postponement, general recall or abandonment.

25. **RADIO COMMUNICATION**

- 25.1 [DP] Except in an emergency, a boat that is racing shall not make voice or data transmissions and shall not receive voice or data communications not available to all boats. This restriction also applies to mobile telephones.
- 25.2 All boats shall carry a VHF radio, and maintain a listening watch on their division frequency, unless otherwise advised, and on standby for distress on VHF 16. The call sign of Blairgowrie Yacht Squadron is 'Blairgowrie Tower'. For boat starts, the call sign for a Race Committee Vessel will be 'Petersville Start'.
- 25.3 The radio frequency for each division is as follows:

Divisions	Radio Frequency
Keelboat Cruising Spinnaker	VHF 82
Sports Boats	VHF 82

26. **PRIZES**

- 26.1 Prizes will be presented in accordance with section 19 of the NOR.

27. **RISK STATEMENT**

- 27.1 RRS 3 states: “The responsibility for a boat’s decision to participate in a race or to continue to race is hers alone.” By participating in this event each competitor agrees and acknowledges that sailing is a potentially dangerous activity with inherent risks. These risks include strong winds and rough seas, sudden changes in weather, failure of equipment, boat handling errors, poor seamanship by other boats, loss of balance on an unstable platform and fatigue resulting in increased risk of injury. **Inherent in the sport of sailing is the risk of permanent, catastrophic injury or death by drowning, trauma, hypothermia or other causes.**
- 27.2 All those taking part in these races are reminded of their obligations as set out in the Australian Sailing Special Regulations clause 1.02 ‘Responsibility of the Person in Charge’. The safety of a boat and its crew is the sole and inescapable responsibility of the person in charge who shall do their best to ensure that the boat is fully found, thoroughly seaworthy and manned by an experienced crew who have undergone appropriate training and are physically fit to face bad weather. They must be satisfied as to the soundness of hull, spares, rigging, sails and all gear. They shall ensure that all safety equipment is properly maintained and stowed and that the crew know where it is kept and how it is to be used. They shall also nominate a person to take over the responsibilities of the person in charge in the event of his incapacitation.

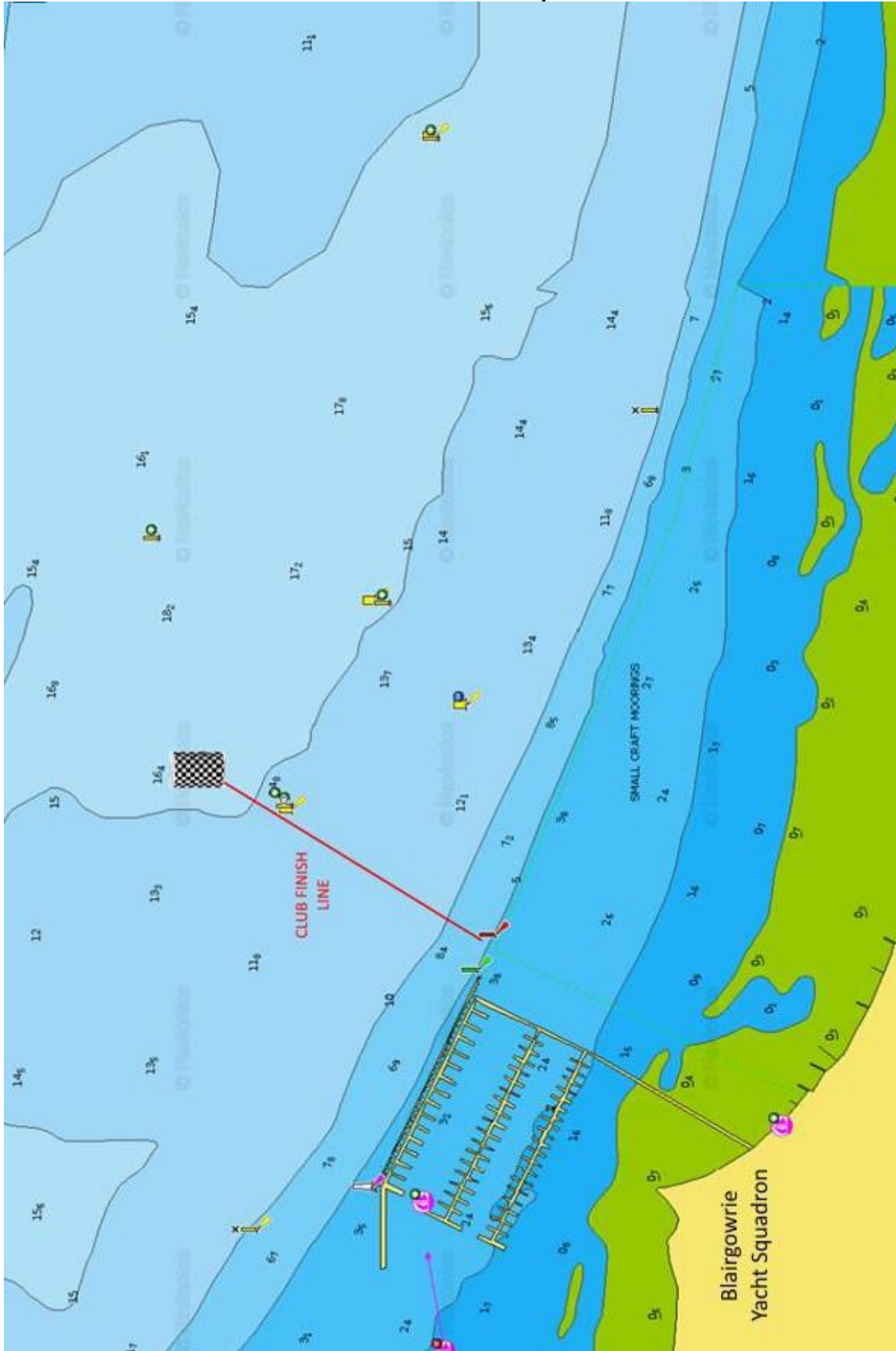
28. **INSURANCE**

- 28.1 Each participating boat shall be insured with valid third-party property liability insurance and third- party personal liability insurance with a minimum cover of \$10,000,000.00 per incident or the equivalent, with cover being maintained for the duration of the regatta. All owners or competitors who sign the entry forms are deemed to have made a declaration that they hold such cover. Owners or competitors not holding this cover shall withdraw their entry.

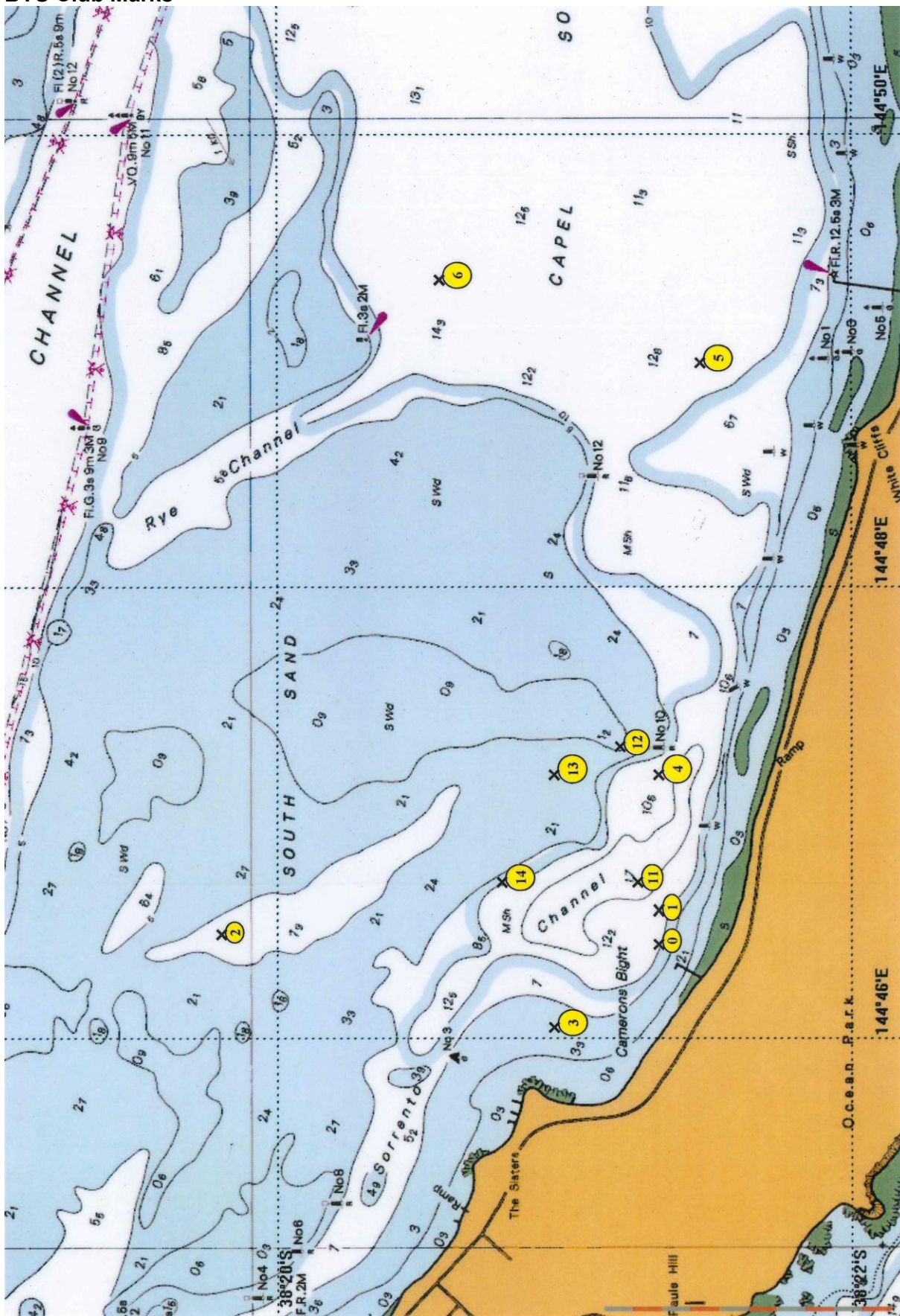
The map shows the Blairgowrie Yacht Squadron area. A red rectangle highlights the 'START AREA'. The map includes various navigational markers, depth soundings, and labels for 'SMALL CRAFT MOORINGS' and 'RAMP'. The area is bounded by a red dashed line.

ATTACHMENT B

PETERSVILLE FINISH LINE – All Course EXCEPT Sportsboat Windward / Leeward Courses



ATTACHMENT C
BYS Club Marks



ATTACHMENT D**MARKS & COURSES – KEELBOAT CRUISING DIVISIONS & TWILIGHT RACES**

MARK	DESCRIPTION
Start	Pink inflatable mark
Turning Mark	Pink inflatable mark
Petersville Finish Mark	Black and white inflatable mark
The Sister Laid Mark (course 5 & 6)	Orange inflatable mark
The Point Franklin Laid Mark (course 5)	Orange inflatable mark
The Collins Bay Laid Mark (course 6)	Orange inflatable mark
The Rosebud Laid Mark (courses 10, 11, 12 & 14)	Orange inflatable mark
The Rye Laid Mark (courses 24, 25, 26, 27, 28 & 29)	Orange inflatable mark
Laid marks in courses 10, 11, 12, 14, 21, 23 laid approximately 200 meters south of South Channel 7, 13, 15, 19 and east of South Channel 23	Orange inflatable mark
<i>Note: marks denoted * are passing marks.</i>	

Course 1 – Twilight Course Approx. 8.5NM

COURSE MARK	MARK DESCRIPTION	REQUIRED SIDE
Start Area	On Water Start	
Turning Mark	Pink Inflatable Mark (refer SI 10.6 & 10.7)	** S or P
BYS 4	38°21.335'S, 144°46.985'E	Starboard
BYS 3	38°21.015'S, 144°46.115'E	Starboard
BYS 2	38°19.930'S, 144°46.400'E	Starboard
BYS 14 *	38°20.835'S, 144°46.725'E	Port
BYS 4	38°21.335'S, 144°46.985'E	Port
So.10 *	38°21.337'S 144°47.315'E	Port
So.12 *	38°21.110'S, 144°48.514'E	Port
BYS 6	38°20.630'S 144°49.375'E	Starboard
BYS 5	38°21.610'S 144°49.130'E	Starboard
So. 10 *	38°21.337'S 144°47.315'E	Starboard
BYS 4 *	38°21.335'S, 144°46.985'E	Starboard
Petersville Finish Line	Finish in a westerly direction	

Course 2 – Twilight Course Approx. 7.3NM

COURSE MARK	MARK DESCRIPTION	REQUIRED SIDE
Start Area	On Water Start	
Turning Mark	Pink Inflatable Mark (refer SI 10.6 & 10.7)	** S or P
BYS 3	38°21.015'S, 144°46.115'E	Starboard
BYS 2	38°19.930'S, 144°46.400'E	Starboard
BYS 14 *	38°20.835'S, 144°46.725'E	Port
BYS 4	38°21.335'S, 144°46.985'E	Port
So.10 *	38°21.337'S 144°47.315'E	Port
BYS 5	38°21.610'S 144°49.130'E	Starboard
So.10 *	38°21.337'S 144°47.315'E	Starboard
BYS 4 *	38°21.335'S, 144°46.985'E	Port
Petersville Finish Line	Finish in a westerly direction	

Course 3 – Twilight Course Approx. 8.5NM

COURSE MARK	MARK DESCRIPTION	REQUIRED SIDE
Start Area	On Water Start	
Turning Mark	Pink Inflatable Mark (refer SI 10.6 & 10.7)	** S or P
BYS 4	38°21.335'S, 144°46.985'E	Port
BYS 5	38°21.610'S 144°49.130'E	Port
BYS 6	38°20.630'S 144°49.375'E	Port
So.12 *	38°21.110'S, 144°48.514'E	Starboard
So.10 *	38°21.337'S 144°47.315'E	Starboard
BYS 4	38°21.335'S, 144°46.985'E	Starboard
Petersville Finish Mark *	Laid mark as shown in Attachment C	Port
BYS 14 *	38°20.835'S, 144°46.725'E	Starboard
BYS 2	38°19.930'S, 144°46.400'E	Port
BYS 3	38°21.015'S, 144°46.115'E	Port
Petersville Finish Line	Finish in an easterly direction	

Course 4 – Twilight Course Approx. 7.5NM

COURSE MARK	MARK DESCRIPTION	REQUIRED SIDE
Start Area	On Water Start	
Turning Mark	Pink Inflatable Mark (refer SI 10.6 & 10.7)	** S or P
BYS 4	38°21.335'S, 144°46.985'E	Port
BYS 5	38°21.610'S 144°49.130'E	Port
BYS 4 *	38°21.335'S, 144°46.985'E	Starboard
Petersville Finish Mark *	Laid mark as shown in Attachment C	Port
BYS 3	38°21.015'S, 144°46.115'E	Starboard
BYS 2	38°19.930'S, 144°46.400'E	Starboard
BYS 14 *	38°20.835'S, 144°46.725'E	Port
BYS 4	38°21.335'S, 144°46.985'E	Starboard
Petersville Finish Line	Finish in a westerly direction	

Course 5 – Twilight Course Approx. 8.2NM

COURSE MARK	MARK DESCRIPTION	REQUIRED SIDE
Start Area	On Water Start	
Turning Mark	Pink Inflatable Mark (refer SI 10.6 & 10.7)	** S or P
BYS 4	38°21.335'S, 144°46.985'E	Starboard
BYS 3	38°21.015'S, 144°46.115'E	Starboard
Sisters Laid Mark	Orange Inflatable Mark at approx. 38°20.580'S, 144°46.150'E	Port
So.8 *	38°20.217'S, 144°45.307'E	Starboard
So.6 *	38°20.093'S, 144°45.062'E	Starboard
So.4 *	38°19.945'S, 144°44.860'E	Starboard
So.2 *	38°19.500'S, 144°44.653'E	Starboard
So.1 *	38°19.475'S, 144°44.527'E	Port
Point Franklin Laid Mark	Orange Inflatable Mark at approx. 38°18.770'S, 144°43.100'E	Port
So.1 *	38°19.475'S, 144°44.527'E	Starboard
So.2 *	38°19.500'S, 144°44.653'E	Port
So.4 *	38°19.945'S, 144°44.860'E	Port
So.6 *	38°20.093'S, 144°45.062'E	Port
So.8 *	38°20.217'S, 144°45.307'E	Port
Sisters Laid Mark	Orange Inflatable Mark at approx. 38°20.580'S, 144°46.150'E	Starboard
BYS 3	38°21.015'S, 144°46.115'E	Port
Petersville Finish Line	Finish in an easterly Direction	

Course 6 – Twilight Course Approx. 6.7NM

COURSE MARK	MARK DESCRIPTION	REQUIRED SIDE
Start Area	On Water Start	
Turning Mark	Pink Inflatable Mark (refer SI 10.6 & 10.7)	** S or P
BYS 4	38°21.335'S, 144°46.985'E	Starboard
BYS 3	38°21.015'S, 144°46.115'E	Starboard
Sisters Laid Mark	Orange Inflatable Mark at approx. 38°20.580'S, 144°46.150'E	Port
So.8 *	38°20.217'S, 144°45.307'E	Starboard
So.6 *	38°20.093'S, 144°45.062'E	Starboard
So.4 *	38°19.945'S, 144°44.860'E	Starboard
So.2 *	38°19.500'S, 144°44.653'E	Starboard
So.1 *	38°19.475'S, 144°44.527'E	Port
Collins Bay Laid Mark	Orange Inflatable Mark at approx. 38°19.090'S, 144°43.870'E	Port
So.1 *	38°19.475'S, 144°44.527'E	Starboard
So.2 *	38°19.500'S, 144°44.653'E	Port
So.4 *	38°19.945'S, 144°44.860'E	Port
So.6 *	38°20.093'S, 144°45.062'E	Port
So.8 *	38°20.217'S, 144°45.307'E	Port
Sisters Laid Mark	Orange Inflatable Mark at approx. 38°20.580'S, 144°46.150'E	Starboard
BYS 3	38°21.015'S, 144°46.115'E	Port
Petersville Finish Line	Finish in an easterly Direction	

Course 10 – Long Course **Approx. 15NM**

COURSE MARK	MARK DESCRIPTION	REQUIRED SIDE
Start Area	On Water Start	
Turning Mark	Pink Inflatable Mark (refer SI 10.6 & 10.7)	** S or P
BYS 3	38°21.015'S, 144°46.115'E	Starboard
BYS 2	38°19.930'S, 144°46.400'E	Starboard
Laid mark approx. 200 metres south of South Channel 7	Orange Inflatable Mark at approx. 38°19.007'S, 144°47.049'E	Starboard
BYS 2	38°19.930'S, 144°46.400'E	Starboard
Laid mark approx. 200 metres south of South Channel 7	Orange Inflatable Mark at approx. 38°19.007'S, 144°47.049'E	Starboard
South Channel 9 *	38°19.346'S, 144°48.708'E	Port
South Channel 11 *	38°19.492'S, 144°50.083'E	Port
South Channel 13 *	38°19.867'S, 144°51.551'E	Port
Laid mark approx. 200 metres south of South Channel 15	Orange Inflatable Mark at approx. 38°20.023'S, 144°52.501'E	Starboard
Rosebud Laid Mark	Orange Inflatable Mark located 1.0-1.5nm inshore of South Channel 15	Starboard
BYS 5	38°21.610'S 144°49.130'E	Starboard
So. 10 *	38°21.337'S 144°47.315'E	Starboard
BYS 4 *	38°21.335'S, 144°46.985'E	Starboard
Petersville Finish Line	Finish in a westerly direction	

Course 11 – Long Course Approx. 19NM

COURSE MARK	MARK DESCRIPTION	REQUIRED SIDE
Start Area	On Water Start	
Turning Mark	Pink Inflatable Mark (refer SI 10.6 & 10.7)	** S or P
BYS 3	38°21.015'S, 144°46.115'E	Starboard
BYS 2	38°19.930'S, 144°46.400'E	Starboard
Laid mark approx. 200 metres south of South Channel 7	38°19.007'S, 144°47.049'E	Starboard
South Channel 9 *	38°19.346'S, 144°48.708'E	Port
South Channel 11 *	38°19.492'S, 144°50.083'E	Port
South Channel 13 *	38°19.867'S, 144°51.551'E	Port
South Channel 15 *	38°20.023'S, 144°52.501'E	Port
South Channel 19 *	38°20.125'S, 144°54.468'E	Port
South Channel 21 *	38°19.500'S, 144°55.486'E	Port
Laid mark approx. 200 metres East of South of Channel 23 ¥	Orange Inflatable Mark at approx. 38°18.807'S, 144°55.951'E	Starboard
South Channel 21 *	38°19.500'S, 144°55.486'E	Starboard
Rosebud Laid Mark	Orange Inflatable Mark at approx. 38°20.870'S 144°54.420'E	Starboard
BYS 5	38°21.610'S 144°49.130'E	Starboard
So. 10 *	38°21.337'S 144°47.315'E	Starboard
BYS 4 *	38°21.335'S, 144°46.985'E	Starboard
Petersville Finish Line	Finish in a westerly direction	

¥ = SMS boat name and sail number to 0407 312 336

Course 12 – Long Course **Approx. 23NM**

COURSE MARK	MARK DESCRIPTION	REQUIRED SIDE
Start Area	On Water Start	
Turning Mark	Pink Inflatable Mark (refer SI 10.6 & 10.7)	** S or P
BYS 3	38°21.015'S, 144°46.115'E	Starboard
BYS 2	38°19.930'S, 144°46.400'E	Starboard
Laid mark approx. 200 metres south of South Channel 7	Orange Inflatable Mark at approx. 38°19.007'S, 144°47.049'E	Starboard
South Channel 9 *	38°19.346'S, 144°48.708'E	Port
South Channel 11 *	38°19.492'S, 144°50.083'E	Port
South Channel 13 *	38°19.867'S, 144°51.551'E	Port
South Channel 15 *	38°20.023'S, 144°52.501'E	Port
South Channel 19 *	38°20.125'S, 144°54.468'E	Port
South Channel 21 *	38°19.500'S, 144°55.486'E	Port
South Channel 23 *	38°18.807'S, 144°55.951'E	Port
Mt Martha Marine Farm NW	38°18.182'S, 144°58.337'E	Starboard
Mt Martha Marine Farm NE	38°18.184'S, 144°58.640'E	Starboard
Mt Martha Marine Farm SE ¥	38°18.430'S, 144°58.640'E	Starboard
Rosebud Laid Mark	Orange Inflatable Mark at approx. 38°20.870'S 144°54.420'E	Starboard
BYS 5	38°21.610'S 144°49.130'E	Starboard
So. 10 *	38°21.337'S 144°47.315'E	Starboard
BYS 4 *	38°21.335'S, 144°46.985'E	Starboard
Petersville Finish Line	Finish in a westerly direction	

¥ = SMS boat name and sail number to 0407 312 336

Course 14 – Long Course **Approx. 20NM**

COURSE MARK	MARK DESCRIPTION	REQUIRED SIDE
Start Area	On Water Start	
Turning Mark	Pink Inflatable Mark (refer SI 10.6 & 10.7)	** S or P
BYS 3	38°21.015'S, 144°46.115'E	Starboard
BYS 2	38°19.930'S, 144°46.400'E	Starboard
Laid mark approx. 200 metres south of South Channel 7	Orange Inflatable Mark at approx. 38°19.007'S, 144°47.049'E	Starboard
South Channel 9 *	38°19.346'S, 144°48.708'E	Port
South Channel 11 *	38°19.492'S, 144°50.083'E	Port
South Channel 13 *	38°19.867'S, 144°51.551'E	Port
South Channel 15 *	38°20.023'S, 144°52.501'E	Port
Laid mark approx. 200 metres south of South Channel 19	Orange Inflatable Mark at approx. 38°20.125'S, 144°54.468'E	Starboard
Rosebud Laid Mark	Orange Inflatable Mark at approx. 38°20.870'S 144°54.420'E	Starboard
Laid mark approx. 200 metres south of South Channel 19 *	Orange Inflatable Mark at approx. 38°20.125'S, 144°54.468'E	Starboard
Rosebud Laid Mark	Orange Inflatable Mark at approx. 38°20.870'S 144°54.420'E	Starboard
Laid mark approx. 200 metres south of South Channel 19 *	Orange Inflatable Mark at approx. 38°20.125'S, 144°54.468'E	Starboard
Rosebud Laid Mark	Orange Inflatable Mark at approx. 38°20.870'S 144°54.420'E	Starboard
BYS 5	38°21.610'S 144°49.130'E	Starboard
So.10 *	38°21.337'S 144°47.315'E	Starboard
BYS 4 *	38°21.335'S, 144°46.985'E	Starboard
Petersville Finish Line	Finish in a westerly direction	

Course 21 – Short Course Approx. 14.5NM

COURSE MARK	MARK DESCRIPTION	REQUIRED SIDE
Start Area	On Water Start	
Turning Mark	Pink Inflatable Mark (refer 10.6 & 10.7)	** S or P
BYS 4	38°21.335'S, 144°46.985'E	Port
So.10 *	38°21.337'S 144°47.315'E	Port
So.12 *	38°21.110'S, 144°48.514'E	Port
BYS 6 *	38°20.630'S 144°49.375'E	Starboard
Laid mark approx. 200 metres south of South Channel 13	Orange Inflatable Mark at approx. 38°19.867'S, 144°51.551'E	Starboard
BYS 6	38°20.630'S 144°49.375'E	Port
BYS 5	38°21.610'S 144°49.130'E	Starboard
BYS 4	38°21.335'S, 144°46.985'E	Starboard
So.10 *	38°21.337'S 144°47.315'E	Port
So.12 *	38°21.110'S, 144°48.514'E	Port
BYS 6	38°20.630'S 144°49.375'E	Starboard
BYS 5	38°21.610'S 144°49.130'E	Starboard
So.10 *	38°21.337'S 144°47.315'E	Starboard
BYS 4 *	38°21.335'S, 144°46.985'E	Starboard
Petersville Finish Line	Finish in a westerly direction	

Course 22 – Short Course Approx. 11NM

COURSE MARK	MARK DESCRIPTION	REQUIRED SIDE
Start Area	On Water Start	
Turning Mark	Pink Inflatable Mark (refer 10.6 & 10.7)	** S or P
BYS 4	38°21.335'S, 144°46.985'E	Port
So.10 *	38°21.337'S 144°47.315'E	Port
So.12 *	38°21.110'S, 144°48.514'E	Port
BYS 6 *	38°20.630'S 144°49.375'E	Starboard
Laid mark approx. 200 metres south of South Channel 13	Orange Inflatable Mark at approx. 38°19.867'S, 144°51.551'E	Port
South Channel 11 *	38°19.492'S, 144°50.083'E	Starboard
South Channel 9 *	38°19.346'S, 144°48.708'E	Starboard
Laid mark approx. 200 metres south of South Channel 7	Orange Inflatable Mark at approx. 38°19.007'S, 144°47.049'E	Port
BYS 2 *	38°19.930'S, 144°46.400'E	Port
BYS 3	38°21.015'S, 144°46.115'E	Port
Petersville Finish Line	Finish in an easterly direction	

Course 23 – Short Course Approx. 16.5NM

COURSE MARK	MARK DESCRIPTION	REQUIRED SIDE
Start Area	On Water Start	
Turning Mark	Pink Inflatable Mark (refer 10.6 & 10.7)	** S or P
BYS 4	38°21.335'S, 144°46.985'E	Port
So.10 *	38°21.337'S 144°47.315'E	Port
So.12 *	38°21.110'S, 144°48.514'E	Port
BYS 6 *	38°20.630'S 144°49.375'E	Starboard
Laid mark approx. 200 metres south of South Channel 13	Orange Inflatable Mark at approx. 38°19.867'S, 144°51.551'E	Port
South Channel 11 *	38°19.492'S, 144°50.083'E	Starboard
South Channel 9 *	38°19.346'S, 144°48.708'E	Starboard
Laid mark approx. 200 metres south of South Channel 7	Orange Inflatable Mark at approx. 38°19.007'S, 144°47.049'E	Port
BYS 2 *	38°19.930'S, 144°46.400'E	Port
BYS 3	38°21.015'S, 144°46.115'E	Port
Petersville Finish Mark *	Laid mark as shown in Attachment C	Starboard
BYS 4 *	38°21.335'S, 144°46.985'E	Port
So.10 *	38°21.337'S 144°47.315'E	Port
So.12 *	38°21.110'S, 144°48.514'E	Port
BYS 6	38°20.630'S 144°49.375'E	Starboard
BYS 5	38°21.610'S 144°49.130'E	Starboard
So.10 *	38°21.337'S 144°47.315'E	Starboard
BYS 4 *	38°21.335'S, 144°46.985'E	Starboard
Petersville Finish Line	Finish in a westerly direction	

Course 24 – Short Course Approx. 11NM

Generally N/S Wind

COURSE MARK	MARK DESCRIPTION	REQUIRED SIDE
Start Area	On Water Start	
Turning Mark	Pink Inflatable Mark (refer SI 10.6 & 10.7)	** S or P
BYS 4	38°21.335'S, 144°46.985'E	Port
So.10 *	38°21.337'S 144°47.315'E	Port
So.12 *	38°21.110'S, 144°48.514'E	Port
BYS 6	38°20.630'S 144°49.375'E	Starboard
Rye Laid Mark	Orange Inflatable Mark located 1.0-1.5nm SOUTH of BYS 6 such that the bearing between BYS 6 & the Rye Laid Mark produces an approximately windward / leeward leg depending on wind direction.	Port
BYS 6	38°20.630'S 144°49.375'E	Port
Rye Laid Mark	Orange Inflatable Mark (refer above)	Port
BYS 6	38°20.630'S 144°49.375'E	Port
So.12 *	38°21.110'S, 144°48.514'E	Starboard
So.10 *	38°21.337'S 144°47.315'E	Starboard
BYS 4 *	38°21.335'S, 144°46.985'E	Starboard
Petersville Finish Line	Finish in a westerly direction	

Course 25 – Short Course Approx. 13NM

Generally N/S Wind

COURSE MARK	MARK DESCRIPTION	REQUIRED SIDE
Start Area	On Water Start	
Turning Mark	Pink Inflatable Mark (refer SI 10.6 & 10.7)	** S or P
BYS 4	38°21.335'S, 144°46.985'E	Port
So.10 *	38°21.337'S 144°47.315'E	Port
So.12 *	38°21.110'S, 144°48.514'E	Port
BYS 6	38°20.630'S 144°49.375'E	Starboard
Rye Laid Mark	Orange Inflatable Mark located 1.0-1.5nm SOUTH of BYS 6 such that the bearing between BYS 6 & the Rye Laid Mark produces an approximately windward / leeward leg depending on wind direction.	Port
BYS 6	38°20.630'S 144°49.375'E	Port
Rye Laid Mark	Orange Inflatable Mark (refer above)	Port
BYS 6	38°20.630'S 144°49.375'E	Port
Rye Laid Mark	Orange Inflatable Mark (refer above)	Port
BYS 6	38°20.630'S 144°49.375'E	Port
So.12 *	38°21.110'S, 144°48.514'E	Starboard
So.10 *	38°21.337'S 144°47.315'E	Starboard
BYS 4 *	38°21.335'S, 144°46.985'E	Starboard
Petersville Finish Line	Finish in a westerly direction	

Course 26 – Short Course Approx. 11NM

Generally E/W Wind

COURSE MARK	MARK DESCRIPTION	REQUIRED SIDE
Start Area	On Water Start	
Turning Mark	Pink Inflatable Mark (refer SI 10.6 & 10.7)	** S or P
BYS 4	38°21.335'S, 144°46.985'E	Port
So.10 *	38°21.337'S 144°47.315'E	Port
So.12 *	38°21.110'S, 144°48.514'E	Port
BYS 6	38°20.630'S 144°49.375'E	Starboard
Rye Laid Mark	Orange Inflatable Mark located 1.0-1.5nm EAST of BYS 6 such that the bearing between BYS 6 & the Rye Laid Mark produces an approximately windward / leeward leg depending on wind direction.	Port
BYS 6	38°20.630'S 144°49.375'E	Port
Rye Laid Mark	Orange Inflatable Mark (refer above)	Port
BYS 6	38°20.630'S 144°49.375'E	Port
So.12 *	38°21.110'S, 144°48.514'E	Starboard
So.10 *	38°21.337'S 144°47.315'E	Starboard
BYS 4 *	38°21.335'S, 144°46.985'E	Starboard
Petersville Finish Line	Finish in a westerly direction	

Course 27 – Short Course Approx. 13NM

Generally E/W Wind

COURSE MARK	MARK DESCRIPTION	REQUIRED SIDE
Start Area	On Water Start	
Turning Mark	Pink Inflatable Mark (refer SI 10.6 & 10.7)	** S or P
BYS 4	38°21.335'S, 144°46.985'E	Port
So.10 *	38°21.337'S 144°47.315'E	Port
So.12 *	38°21.110'S, 144°48.514'E	Port
BYS 6	38°20.630'S 144°49.375'E	Starboard
Rye Laid Mark	Orange Inflatable Mark located 1.0-1.5nm EAST of BYS 6 such that the bearing between BYS 6 & the Rye Laid Mark produces an approximately windward / leeward leg depending on wind direction.	Port
BYS 6	38°20.630'S 144°49.375'E	Port
Rye Laid Mark	Orange Inflatable Mark (refer above)	Port
BYS 6	38°20.630'S 144°49.375'E	Port
Rye Laid Mark	Orange Inflatable Mark (refer above)	Port
BYS 6	38°20.630'S 144°49.375'E	Port
So.12 *	38°21.110'S, 144°48.514'E	Starboard
So.10 *	38°21.337'S 144°47.315'E	Starboard
BYS 4 *	38°21.335'S, 144°46.985'E	Starboard
Petersville Finish Line	Finish in a westerly direction	

Course 28 – Short Course Approx. 10NM

Generally E/W Wind

COURSE MARK	MARK DESCRIPTION	REQUIRED SIDE
Start Area	On Water Start	
Turning Mark	Pink Inflatable Mark (refer SI 10.6 & 10.7)	** S or P
BYS 4	38°21.335'S, 144°46.985'E	Port
So.10 *	38°21.337'S 144°47.315'E	Port
BYS 5	38°21.610'S 144°49.130'E	Port
Rye Laid Mark	Orange Inflatable Mark located 1.0-1.5nm EAST of BYS 5 such that the bearing between BYS 5 & the Rye Laid Mark produces an approximately windward / leeward leg depending on wind direction.	Starboard
BYS 5	38°21.610'S 144°49.130'E	Starboard
Rye Laid Mark	Orange Inflatable Mark (refer above)	Starboard
BYS 5	38°21.610'S 144°49.130'E	Starboard
So.10 *	38°21.337'S 144°47.315'E	Starboard
BYS 4 *	38°21.335'S, 144°46.985'E	Starboard
Petersville Finish Line	Finish in a westerly direction	

Course 29 – Short Course Approx. 13NM

Generally E/W Wind

COURSE MARK	MARK DESCRIPTION	REQUIRED SIDE
Start Area	On Water Start	
Turning Mark	Pink Inflatable Mark (refer SI 10.6 & 10.7)	** S or P
BYS 4	38°21.335'S, 144°46.985'E	Port
So.10 *	38°21.337'S 144°47.315'E	Port
BYS 5	38°21.610'S 144°49.130'E	Port
Rye Laid Mark	Orange Inflatable Mark located 1.0-1.5nm EAST of BYS 5 such that the bearing between BYS 5 & the Rye Laid Mark produces an approximately windward / leeward leg depending on wind direction.	Starboard
BYS 5	38°21.610'S 144°49.130'E	Starboard
Rye Laid Mark	Orange Inflatable Mark (refer above)	Starboard
BYS 5	38°21.610'S 144°49.130'E	Starboard
Rye Laid Mark	Orange Inflatable Mark (refer above)	Starboard
BYS 5	38°21.610'S 144°49.130'E	Starboard
So.10 *	38°21.337'S 144°47.315'E	Starboard
BYS 4 *	38°21.335'S, 144°46.985'E	Starboard
Petersville Finish Line	Finish in a westerly direction	

Course 30 Special Course - refer to Official Notice Board

ATTACHMENT E
SPORTS BOAT DIVISION WINDWARD / LEEWARD COURSES

E1 All marks to PORT except Gate. Either Gate Marks may be rounded to port or to starboard after passing through the gate from the direction of the last mark. If only one gate mark is set, yachts shall round that mark to port.

MARK	MARK DESCRIPTION
Start/Finish Mark	Pink Inflatable Mark
Windward Mark	Orange Inflatable Mark
Gate	Orange Inflatable Mark
Replacement Mark	Yellow Inflatable Mark

COURSE NUMBER	COURSE CONFIGURATION
1	Start – 1 – Finish
2	Start – 1 – 2S/2P – 1 – Finish
3	Start – 1 – 2S/2P – 1 – 2S/2P – 1 – Finish

