



BLAIRGOWRIE YACHT SQUADRON

44th Minnow National Championships



Minnow Sailing Association
— VICTORIA —

SAILING INSTRUCTIONS

7th -13th January 2023

Organising Authority:
Blairgowrie Yacht Squadron

In conjunction with the:
Minnow Sailing Association (Victoria)

**2023 MINNOW
AUSTRALIAN NATIONAL CHAMPIONSHIPS**

**SAILING INSTRUCTIONS
7th JANUARY 2023-13TH JANUARY 2023**

The notation [DP] means that the penalty for a breach of the rule may, at the discretion of the protest committee, be less than disqualification.

1 RULES

1.1

The regatta will be governed by the rules as defined in *The Racing Rules of Sailing (2021-2024)*, Prescriptions and Regulations of Australian Sailing, the Minnow Sailing Association Class Rules and the Sailing Instructions

1.2 The Novice Fleet will sail under the *World Sailing Introductory Rules for Racing* (refer Attachment C).

1.3 Arbitration will be conducted in accordance with Appendix T of the RRS, amended as per SI 17.1

2 CHANGES TO SAILING INSTRUCTIONS

2.1 Any change to the sailing instructions will be posted before 0900 the day it will take effect, except that any change to the schedule of races will be posted by 1900 on the day before it will take effect.

3 COMMUNICATIONS WITH COMPETITORS

3.1 Notices to competitors will be posted on the official Minnow notice board located on the ground level of the club in the Junior Lounge

3.2 The Race office is located on the 2nd floor of the clubhouse

4 CODE OF CONDUCT

4.1 Competitors and support persons shall comply with reasonable requests from race officials

5 SIGNALS MADE ASHORE

5.1 Signals made ashore will be displayed from the eastern halyards of the club's main flagpole located in front of the clubhouse

5.2 When flag AP is displayed ashore, "1 minute" is replaced with not less than 30 mins in Race signals AP

5.3 Boats are requested not to leave the shore until the raising of Flag D with one sound signal is made. The warning signal will not be made before the scheduled time or less than 30mins after flag D is displayed.

6 SCHEDULE

6.1

Date	Event	Time
Sat 7 th Jan	Registration & measurement	1000hrs – 1800hrs
	Coach & support boat registration	1000hrs – 1800hrs
Sun 8 th Jan	Registration & measurement	0900hrs – 1100hrs
	Coach & support boat registration	0900hrs – 1100hrs
	Volunteers briefing	1100hrs – 1200hrs
	Competitors briefing	1300hrs
	Invitational race	1430hrs (1 st warning)
	Welcome Dinner	1800hrs
Mon 9 th Jan	Race Session 1 (2 races)	1000hrs (1st warning)
	Race Session 2 (2 races)	1430hrs (1st warning)
Tues 10 th Jan	Race Session 3 (2 races)	1000hrs (1st warning)
	Race Session 4 (2 races)	1430hrs (1st warning)
Wed 11 th Jan	Lay Day	
Thurs 12 th Jan	Race Session 5 (2 races)	1000hrs (1st warning)
	Race Session 6 (2 races)	1430hrs (1st warning)
Fri 13 th Jan	Race Session 7 (2 races)	1000hrs (1st warning)
	Presentation Dinner	1800 hrs

- 6.2 A maximum of 3 races may be sailed in a session.
- 6.3 Under normal sailing and weather conditions it is not expected that more than 4 races will be sailed on any race day.
- 6.4 One extra race per day may be sailed, provided that the program does not become more than one race ahead of schedule and the change is made in accordance with SI 2.1
- 6.5 The Lay Day may be used for re-sails or to bring racing forward if forecast weather for subsequent day(s) is considered unsuitable for sailing.
- 6.6 On the last scheduled day of racing no warning signal will be made after 1300 hrs

7 COMPETITION FORMAT

- 7.1 Racing will be conducted on separate courses for the Open (incorporating the Junior Division) and Novice Fleets.
- 7.2 Junior eligibility - any Minnow sailor under twelve years of age on the day of the first scheduled race of the championships, and who is not competing as a Novice.

8 CLASS FLAGS

- 8.1 The Class Flag for the **Open Fleet** will be a black Minnow emblem on a blue background
- 8.2 The Class Flag for the **Novice Fleet** will be a black Minnow emblem on a green background

9 RACING AREAS

- 9.1 The racing area shall be on the waters of Port Phillip in the vicinity of the Blairgowrie Yacht Squadron (Attachment A)

10 THE COURSES

- 10.1 The diagrams in Attachment B show the courses, including the order in which marks are to be passed, and the side on which each mark is to be left.
- 10.2 No later than the warning signal, the race committee boat will display the course to be sailed using numeral pennant 1 (Course 1), or numeral pennant 2 (Course 2).

11 MARKS

- 11.1 For the **Open Fleet** Marks 1, 2, 3 will be Orange truncated conical inflatable marks.
- 11.2 The **Open Fleet** Start pin will be a green cylindrical inflatable mark
- 11.3 The **Open Fleet** finishing mark will be a chequered black and white cylindrical inflatable mark
- 11.4 For the **Novice Fleet** Marks 1, 2, 3 will be yellow inflatable truncated conical Marks and the start/finish pin will be a chequered black and white cylindrical inflatable mark.
- 11.5 The **Open Fleet** replacement mark, as provided in SI 13.1 will be a orange conical inflatable buoy with black band.

12 THE START

- 12.1 Races will be started using RRS 26 with the warning signal made **3** minutes before the starting signal.

- 12.2 The starting line is between a staff displaying an orange flag on the Race Committee boat at the starboard end of the start line and the course side of the port-end starting mark.
- 12.3 To alert boats that a race will begin soon, the orange starting line flag will be displayed with one sound at least **5** minutes before a warning signal is made.
- 12.4 A boat that does not start within 5 minutes after her starting signal will be scored Did Not Start without a hearing. This changes RRS A5.1 and A5.2.

13 CHANGE OF THE NEXT LEG OF THE COURSE

- 13.1 To change the next leg of the course, the race committee will lay a new mark (or move the finishing line) and remove the original mark as soon as practicable. When in a subsequent change, a new mark is replaced, it will be replaced by an original mark.
- 13.2 There will be no course change for the novice Fleet.

14 THE FINISH

- 14.1 **Open Fleet:** The finishing line will be between a staff displaying a Blue flag on the Race Committee boat and the course side of the finishing mark. The lowering of the blue flag will be accompanied with 1 sound signal either at the closure of the finishing window or when the last boat finishes.
- 14.2 **Novice Fleet:** The finishing line will be between a staff displaying a blue flag on the Race Committee boat and the course side of the finishing mark. The lowering of the blue flag will be accompanied with 1 sound signal either at the closure of the finishing window or when the last boat finishes.

15 TIME LIMITS AND TARGET TIMES

- 15.1 **Open Fleet:** The Target Time, Mark 1 Time Limit, Race Time Limit (see RRS 35), and the Finishing Window are shown in the table below

Target Time	Mark 1 Time Limit	Race Time Limit	Finishing Window
40 mins	30 mins	70 mins	10 mins

- Novice Fleet:** The Target Time, Mark 1 Time Limit, Race Time Limit (see RRS 35), and the Finishing Window are shown in the table below

Target Time	Mark 1 Time Limit	Race Time Limit	Finishing Window
30 mins	20 mins	50 mins	10 mins

- 15.2 If no boat has passed the first mark within the Mark 1 Time Limit, the race will be abandoned.
- 15.3 Failure to meet the Target Time will not be grounds for redress. This changes RRS 62.1(a).

- 15.4 At the Race Committee's discretion, boats may be allocated a finishing position and be directed to return to the starting area or other location without crossing the finishing line. The changes RRS 28.

16 PROTESTS AND REQUESTS FOR REDRESS

- 16.1 No protest or request for redress will be accepted unless the protesting boat notifies (and receives acknowledgement from) the finish boat on the water, immediately after finishing. (immediately infers, prior to consulting coach or support boat). The protesting boat shall declare her intention to protest or seek redress and identify the boat(s) being protested or the redress being sought. Once the Blue Flag indicating the end of the Finish window is lowered no more protest notifications will be acknowledged. The only exemption from this clause is for boats that retire from the race. This changes RRS 63.1
- 16.2 Protest forms are available at the race office. Protests and requests for redress or reopening shall be delivered there within the appropriate time limit.
- 16.3 The protest time limit is 60 minutes after the last boat has finished the last race of the day, or the race committee signals no more racing today, whichever is later.
- 16.4 Notices will be posted no later than 30 minutes after the protest time limit to inform competitors of hearings in which they are parties or named as witnesses. Hearings will be held in the protest room beginning at the time posted.
- 16.5 Notices of protests by the race committee or protest committee will be posted to inform boats under rule 61.1(b).
- 16.6 Breaches of class rules, instructions 12.1, 19, 23, 25 will not be grounds for a protest by a boat. This changes rule 60.1(a). Penalties for these breaches may be less than disqualification if the protest committee so decides [DP]
- 16.7 On the last scheduled day of racing a request for reopening a hearing shall be delivered
- (a) within the protest time limit if the requesting party was informed of the decision on the previous day;
 - (b) no later than 30 minutes after the requesting party was informed of the decision on that day.
- This changes RRS 66.
- 16.8 On the last scheduled day of racing a request for redress from a protest committee decision shall be delivered no later than 30 minutes after the decision was posted.

17 ARBITRATION

- 17.1 RRS Appendix T shall apply with the Post Race Penalty being amended as follows:
- T1 (b) A Post Race Penalty is 20% of the difference between a boat's finishing place and the score for a DNF rounded up to the nearest whole number.

The scores for other boats shall not be changed. The penalty shall not cause a boat to be scored worse than DNF.

18 SCORING

- 18.1 4 races are required to be completed to constitute a series.
- 18.2 (a) When fewer than 6 races have been completed, a boat's series score is the total of her race scores.
- (b) When from 6 to 7 races have been completed, a boat's series score is the total of her race scores excluding her worst score.
- (c) When 8 or more races have been completed, a boat's series score is the total of her race scores excluding her two worst scores.

19 SAFETY REGULATIONS

- 19.1 Sign On and Sign Off: All boats must "sign on" before leaving the shore and "sign off" after returning to the shore. The sign off period will close at the conclusion of protest time.
- 19.2 Sign On/Off sheets will be available in the Junior Lounge
- 19.3 Failure to Sign On/Sign Off in accordance with SI.19.1 will result in that boat being scored a [DP] of 50% of their finishing place in the first race of the day without hearing. This changes Rule 63.1, A4 and A5.
- 19.4 A boat that retires from a race shall notify the race committee at the first reasonable opportunity and sign off as soon as returning to shore.

20 REPLACEMENT OF EQUIPMENT

- 20.1 Each competitor shall use only one sail.
- 20.2 Substitution of damaged or lost equipment will not be allowed unless authorized by the race committee. Requests for substitution shall be made to the committee at the first reasonable opportunity

21 EQUIPMENT AND MEASUREMENT CHECKS

- 21.1 A boat or equipment may be inspected at any time for compliance with the Minnow Sailing Association Rules of Measurement and Construction and sailing instructions. On the water, a boat can be instructed by a race committee equipment inspector or measurer to proceed immediately to a designated area for inspection.
- 21.2 Lifejackets in accordance with Special Regulation Part II for Off the Beach Boats must be of suitable condition and weight appropriate for the competitor. These will be checked at measurement

22 EVENT ADVERTISING

22.1 Boats shall display event advertising supplied by the organizing authority.

23 OFFICIAL BOATS

23.1 Official race management boats will be identified by displaying the BYS burgee

24 SUPPORT BOATS

24.1 All support boats shall be registered with the Organising Authority and will be required to comply with event support boat regulations (Attachment D)

24.2 **Open and Junior Division.** Team managers, coaches and other support personnel shall register with the host Club at the time of Registration specified in the Schedule. Support boats shall carry a VHF radio and comply with all local safety rules in accordance with Victorian Marine Regulations, and the instructions of the Race Committee. Approved Support Boats shall keep at least 100m clear of the course area during racing, except when asked to assist by an official from the race committee. Failure to comply may result in the disqualification of all competitors associated with the infringement.

24.3 **Novice Division.** The above Open and Junior Division regulations apply with the exception of official safety boats registered with the Race Committee approved to provide on course support. This changes rule 41.

24.4 Non registered coaches, parents, private and spectator craft must remain more than 150m outside the entire course area

25 RUBBISH DISPOSAL

25.1 Trash may be placed aboard official [or support person] vessels

26 RADIO COMMUNICATION

26.1 Except in an emergency, a boat that is racing shall not make voice or data transmissions and shall not receive voice or data communication that is not available to all boats. This includes mobile phones.

27 PRIZES

27.1 Trophies to be awarded include:

Open Fleet: 1st to 5th

Junior 1st-3rd

Female: 1st

Novice; 1st-5th

President's award

Most improved award

Sportsmanship award

Additional prizes may be awarded at the Committee's discretion.

28 DISCLAIMER OF LIABILITY

28.1 Competitors participate in the regatta entirely at their own risk. See RRS 3, Decision to Race. The organizing authority will not accept any liability for material damage or personal injury or death sustained in conjunction with or prior to, during, or after the regatta.

29 INSURANCE

29.1 Each participating boat shall be insured with valid third-party liability insurance with a minimum cover of \$5,000,000.00 per incident or the equivalent.

30 BOAT STORAGE

30.1 There is storage for road trailers for the duration of the regatta, subject to space being available.

30.2 Minnows are permitted to be left on the grass in front of the clubhouse for the regatta.

30.3 Storage is at owner's risk

31 FURTHER INFORMATION

31.1 Michelle de Blaquiére
Head of Sailing
michelle@bys.asn.au

Andrew Cooper
General Manager
andrew@bys.asn.au

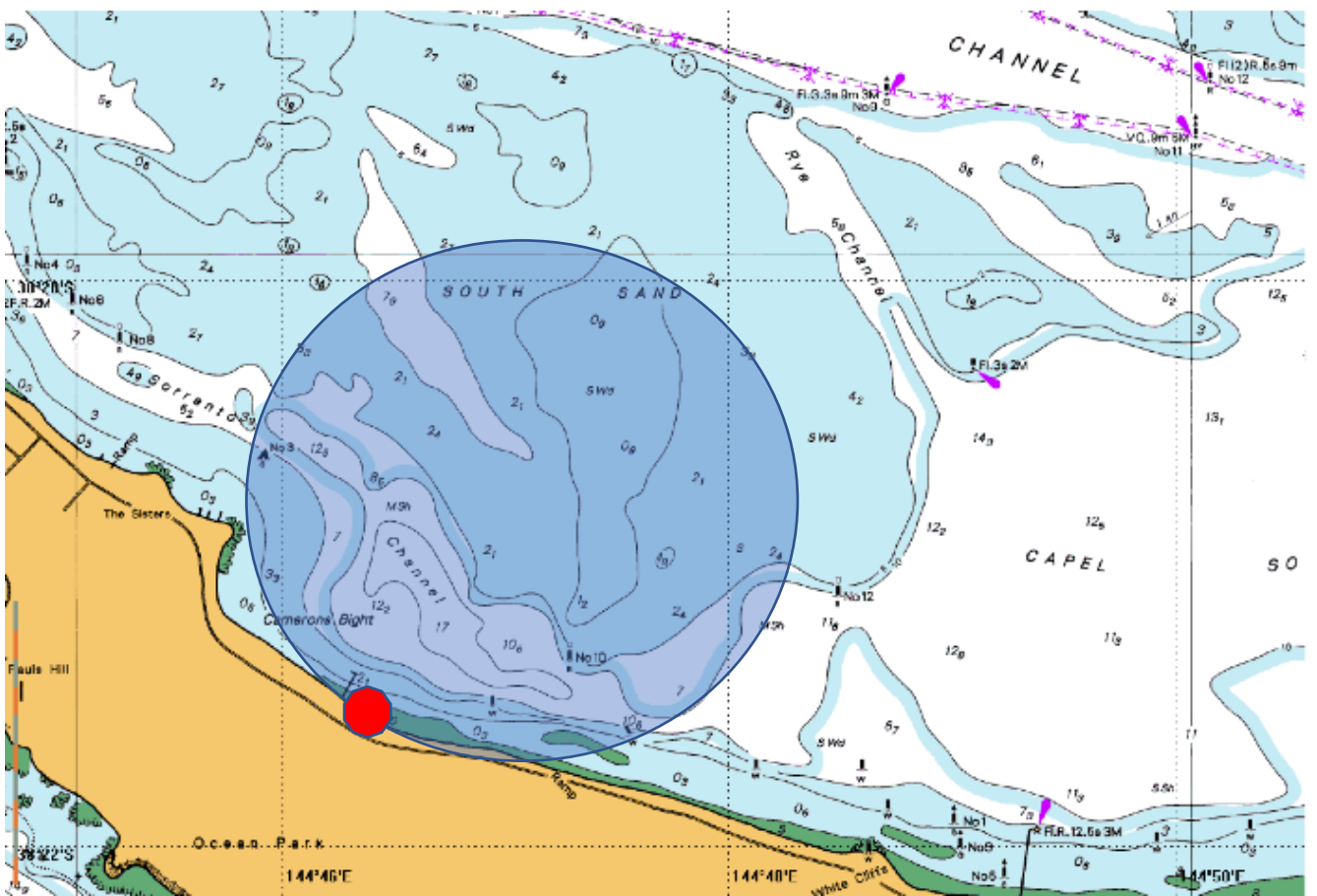
Richard Backwell
Minnow Association President
richardb@vicbar.com.au

Andrew Little
Race Officer (Open)
Aflittle.bys@gmail.com

Andrew Wilkinson
Training and Development
Manager
training@bys.asn.au

Ed Warner
Race Officer (Novice)

ATTACHMENT A OPEN and NOVICE FLEETS



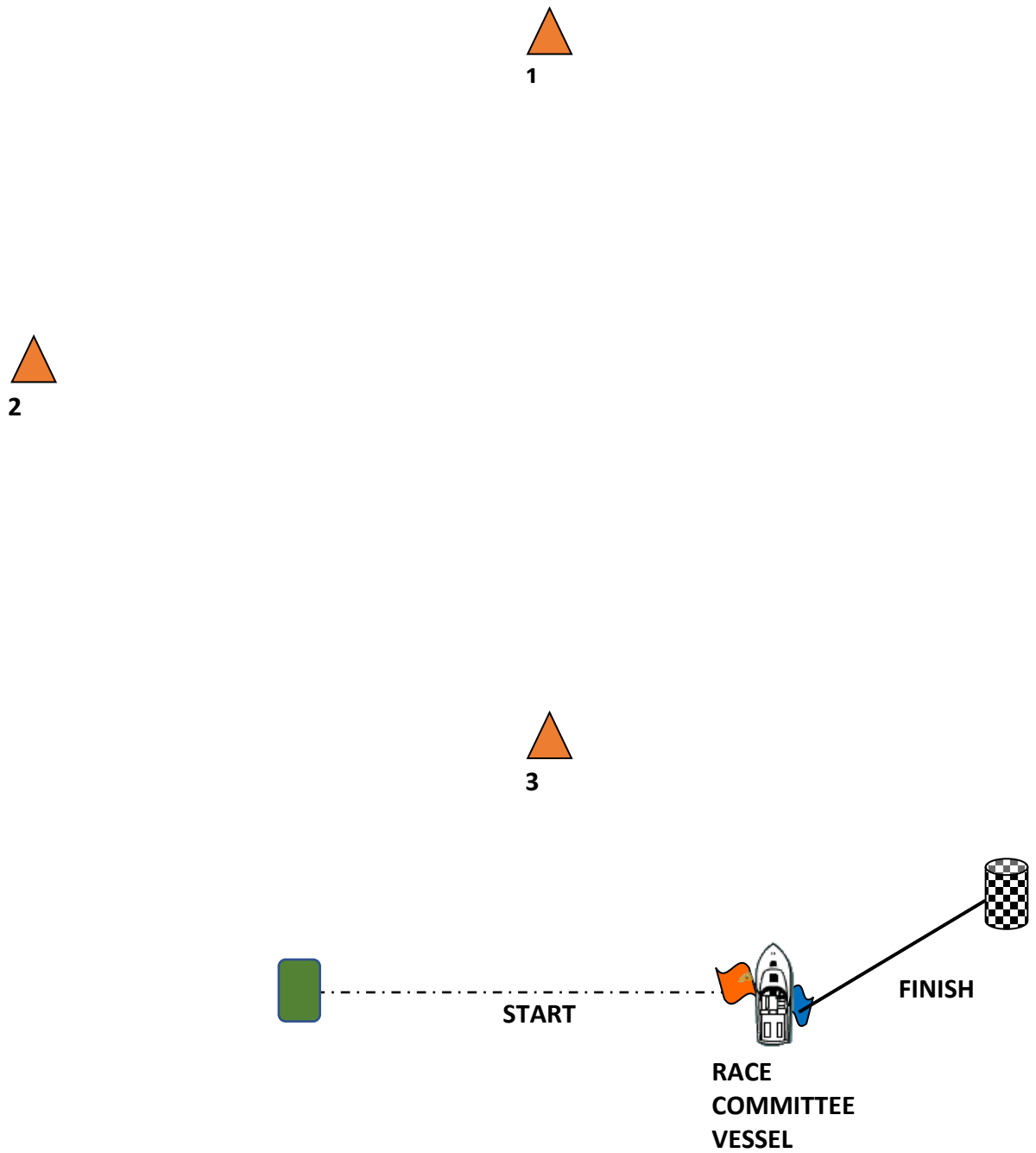
ATTACHMENT B - COURSES

OPEN FLEET

Course 1: Start, 1, 2, 3, 1, 3, Finish

Course 2: Start, 1, 2, 3, Finish

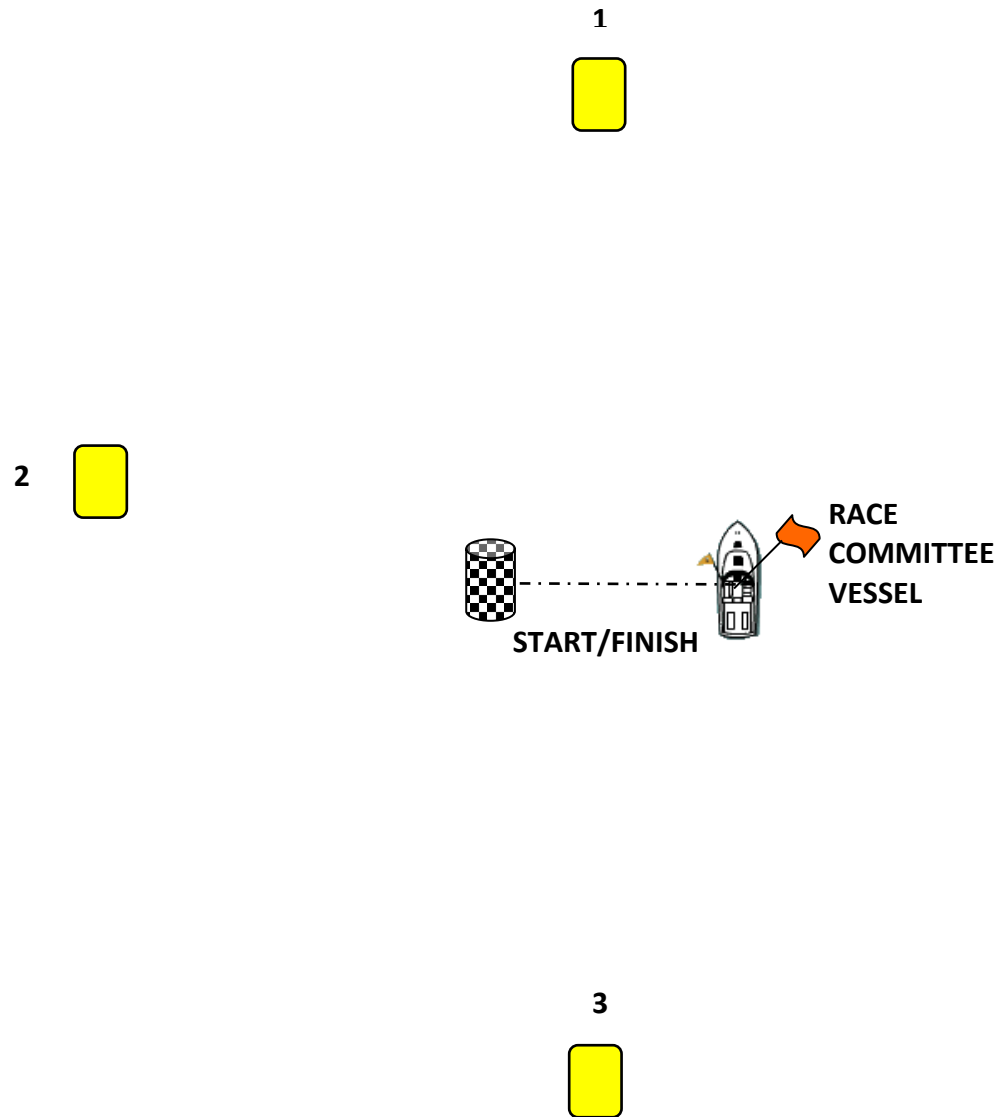
All buoys to Port



NOVICE FLEET

Course: Start, 1, 2, 3, Finish

All buoys to Port



ATTACHMENT C



Introductory Rules for Racing

Version 1.01 - February 2008

Some Explanations

Windward and *Leeward*: The *leeward* side of your boat is the side where your mainsail lies. The *windward* side is the other side.

Port and *Starboard tack*: You are on *port* or *starboard tack* according to your *windward* side.

Advisor: A person appointed by the race organizers to assist competitors in understanding the rules and, when appropriate, to penalize a boat.

Basic Rules

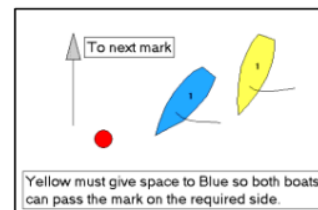
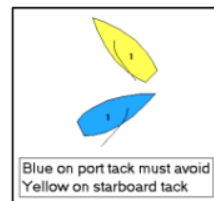
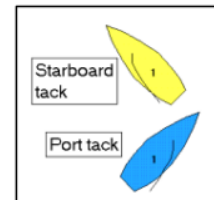
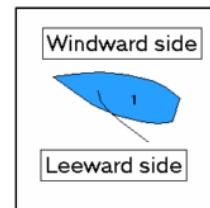
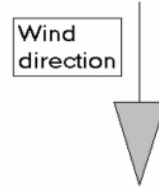
1. You must comply with the principles of good sportsmanship.
2. You must try not to collide with another boat.

Rules When Boats Meet

3. When you and the other boat are on opposite *tacks*, if you are on *port tack* you must avoid the boat on *starboard tack*.
4. When you and the other boat are on the same *tack*, you must avoid the other boat
 - (a) if she is in front of you, or
 - (b) if she is on your *leeward* side.
5. After starting, when you and the other boat approach a mark or an object that both boats need to avoid, and the other boat is between you and the mark or other object, you must give her sufficient space to pass it safely on the same side. However, when the boats are on opposite *tacks* at a windward mark, this rule does not apply.
6. When the other boat is required to avoid you, if you change course, you must give the other boat an adequate opportunity to avoid you.

Other Rules

7. At the starting signal you must be behind the starting line.
8. After the starting signal, you must sail the course described by the race organizers.
9. You must not touch a mark of the course.
10. If you think you or another boat has broken a rule or if you are unclear about the rules at any time during the race, you must describe the incident to the *advisor* after the race. The *advisor* may then add two points to the score of any boat that has broken a rule. If the offence is serious, the *advisor* may add extra points to the boat's score.



Responsibilities of Race Organizers

- (a) To run fair, enjoyable and safe races.
 - (b) To inform all the competitors about the sequence of starting signals, the starting and finishing lines, the course to be sailed and the marks to be rounded.
 - (c) To score each boat points equal to her finishing position, after adjusting for handicaps when appropriate.
 - (d) To appoint an *advisor* on the rules and procedures for racing.
-

Introduction and Use

These rules are designed to stand on their own so that sailors who are starting to race can compete using only these few rules and without the need to learn the many details of the ISAF Racing Rules of Sailing (RRS). They are appropriate for small boats in sheltered waters; they are not intended for boats over 6 metres (20 feet) long when an experienced person should be alongside and able to instruct the novice helm. These rules are compatible with the principles and fundamental rules in the RRS. However, they are neither a guide to nor an abbreviated form of the RRS.

The rules are intentionally minimalist and they omit as many complications of the RRS as possible. They are written for sailors who are starting to race and with no more than 2 years of racing experience. After this period these sailors should be encouraged to sail races under the Racing Rules of Sailing.

Boats racing under these rules should race on their own course and should not share the course area or marks with boats racing under the RRS.

Unlike normal racing, there is an obligation on the race organisers to verbally brief all competitors about the marks, the course and all relevant race management matters.

The role of rules advisor is a vital part of teaching the rules. Ideally the rules advisor should be afloat and should watch the racing but, as a minimum, the advisor must be available for discussion immediately the sailors return ashore. The rules advisor may be the same person as the race officer.

The standard penalty for breaking a rule is necessarily small at this learning stage and the difficulties of penalty turns are avoided. As it is only the advisor that imposes a penalty, possible pressure on a less confident competitor while racing is avoided. Note this two place penalty applies to all errors (including starting and course errors) although there is provision for increasing the penalty to avoid any advantage being gained from the error.

ATTACHMENT DB

SUPPORT BOAT REGULATIONS

General

These Support Boat Regulations (SBR) shall apply at all times while the boat is at the venue (BYS). Local marine regulations specify the safety equipment to be carried and conditions under which life jackets (PFD 1) are to be worn.

A copy of the regulations is available at: <https://transportsafety.vic.gov.au/maritime-safety/recreational-vessel-operators/paddle-craft/victorian-recreational-boating-safety-handbook>.

For the purposes of these regulations, a support boat includes any boat that is under the control or direction of a person who is or may provide physical or advisory support to an athlete, including the gathering of data that may be used at a later time.

The Organising Authority may inspect boats at any time to ensure that they comply with these regulations, and the person responsible for the boat shall facilitate such inspection.

An alleged breach of any of these regulations may be referred to the Protest Committee for a hearing. As a result of any hearing, the Protest Committee may instruct the Organising Authority to withdraw accreditation and access rights from the driver or person in charge, with or without the option of substitution, either for a specified period or for the remainder of the competition.

The Organising Authority may change these regulations at any time. Any changes will be posted on the Official Notice Board.

The Organising Authority may, at its discretion, refuse to register support boats not deemed to be suitable. Generally, open boats more than 4.0m and less than 7.5m in length and having minimal or no superstructure (cabin, coach house, bridge, etc) are considered suitable.

Support boats and designated drivers shall be registered at the Regatta Office either before leaving the venue by water for the first time or by 18:00 on the day before the first race of the event that it is supporting, whichever is earlier.

Each boat shall be insured with valid third-party liability insurance with a minimum coverage of AUD\$5,000,000 (or equivalent) per incident.

Only accredited persons may be designated drivers.

The person registering the support boat shall confirm that:

- A valid insurance certificate showing proof of third-party liability coverage as required has been obtained;
- Each designated driver has a motorboat driving license recognised by a national authority appropriate to that boat; and
- Anyone who will be using a radio has an appropriate radio operation license recognised by a national authority.

Support boats shall be provided with a numbered flag by the Organising Authority. Flags must be displayed at all times whilst afloat and returned to the Race Office at the end of the event.

Sailing Venue

Support boats shall use the designated area for launching – these may be a short distance from the venue. Once launched, trailers shall be moved immediately to a designated trailer park or as otherwise directed by the Organising Authority.

Only registered support boats will be allowed into the sailing venue. (Allocated berths or area will be provided at registration).

When not in use, support boats shall be appropriately berthed as directed by the Organising Authority in the allocated areas for support boats for the entire time that these support boat rules apply.

Support boats shall not use the dinghy launching slipways or keelboat pontoons for any purpose whatsoever, including mooring, launching and retrieval, and loading and unloading of equipment.

Safety

Support boats shall carry on board:

- life jackets for all passengers and the driver;
- first-aid kit;
- working VHF radio capable of receiving the allocated race management channels for this event;
- device for making a sound signal;
- compass;
- adequate anchor and tackle for conditions and depth;
- tow rope (minimum 15m long and 10mm thick);
- operational engine kill cord (also known as a safety lanyard or automatic engine immobiliser);
- hand pump or bailer;
- knife; and
- any additional safety equipment required by local maritime law.

It is recommended that life jackets be worn at all times when afloat. All drivers shall wear a kill cord all times when the motor is in operation (refer back to manufacturer's operating manual).

The maximum plated / certified passenger limits for the boat shall never be exceeded.

Team leaders are responsible for overseeing the safe operation of their support boats on the water, including knowledge of who is afloat and ensuring their safe return to the venue.

At all times, the registered driver(s) of a support boat shall comply with directions given by a Race Official. In particular, this includes assisting in rescue operations when requested to do so.

Support boats shall comply with local harbour and marina regulations, including speed limits.

When a race committee displays code flag "V" with repetitive sounds, all official and support boats on the relevant course area shall monitor the relevant Race Committee radio channel for search and rescue instructions.

General Restrictions

The registered driver(s) of a support boat will be responsible for the control of the boat at all times and will be held responsible for any inappropriate behaviour, dangerous actions or improper practices, or actions affecting the fairness or safety of competition.

Support boats shall not leave any device, piece of equipment, buoy, marker or similar item permanently in the water. Temporary use of floating objects is allowed for current measurement. These objects shall be removed as soon as the measurement has been taken.

Support boats shall take particular care to minimise their wash when transiting the course areas. Support boats shall not interfere with boats racing or official boats, or create a wake that affects boats racing.

Race Area Restrictions

Support boats shall not be positioned:

- Closer than 100 m of any boat racing
- Within 100 m of the starting line and marks from the time of the preparatory signal until all boats have left the starting area, or the race committee signals a postponement, general recall or abandonment.
- Between any boat racing and the next mark of the course.
- Within 100 m of any mark of the course while boats are in the vicinity of that mark.
- Within 100 m of the finishing line and marks while boats are finishing.

In addition, support boats that are motoring above 5 knots shall remain at least 150m from any boat racing.