



BLAIRGOWRIE YACHT SQUADRON

FAMILY | FRIENDSHIP | SAILING

— 2023/24 —

SI APPENDIX B

OTB
COURSES

For Club Starts

Note - All marks to be left to Port unless noted otherwise (S)

Course	Wind	Laser/Aero/Pacer, Sabre, Contender, Mixed Mono
3		Special Course – Refer Noticeboard
4	SW	Start – 11 – 12 – 13 – 11 – 13 – 11 – 12 – 13 – 1(S) – Finish
5	S	Start – 11 – 13 – 14 – 11 – 14 – 11 – 13 – 14 – 1(S) – Finish
6	SE	Start – 4 – 13 – 14 – 4 – 14 – 4 – 13 – 14 – 1(S) – Finish
7	E	Start – 4 – 13 – 11 – 4 – 11 – 4 – 13 – 11 – 4 – 1(S) – Finish
8	NE	Start – 11 – 13 – 14 – 11 – 13 – 11 – 13 – 14 – 1(S) – Finish
9	N	Start – 4 – 13 – 11 – 4 – 13 – 4 – 13 – 1(S) – Finish
10	NW	Start – 11 – 12 – 14 – 12 – 14 – 11 – 12 – 14 – 1(S) – Finish
11	W	Start – 11 – 13 – 3 – 11 – 13 – 3 – 13 – 3 – 1(S) – Finish
12	WSW	Start – 11 – 14 – 3 – 14 – 3 – 14 – 3 – 1(S) – Finish
13	SW	Start – 11 – 12 – 13 – 11 – 13 – 11 – 12 – 13 – 11 – 13 – 1(S) – Finish
14	S	Start – 11 – 13 – 14 – 11 – 14 – 11 – 13 – 14 – 11 – 14 – 1(S) – F
15	SE	Start – 4 – 13 – 14 – 4 – 14 – 4 – 13 – 14 – 4 – 14 – 1(S) – Finish
16	E	Start – 4 – 13 – 11 – 4 – 11 – 4 – 13 – 11 – 4 – 11 – 4 – 1(S) – Finish
17	N	Start – 4 – 13 – 11 – 4 – 13 – 4 – 13 – 11 – 4 – 13 – 1(S) – Finish

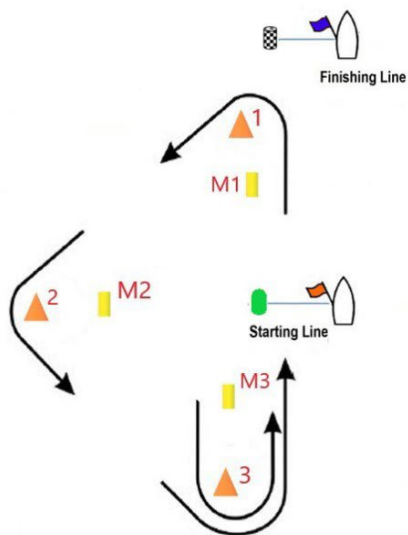
Course	Wind	Minnow/ Open Bic /Optimist
3		Special Course – Refer Noticeboard
4	SW	Start – 11 – 12 – 13 – 11 – 13 – 1(S) – Finish
5	S	Start – 11 – 13 – 14 – 11 – 14 – 1(S) – Finish
6	SE	Start – 4 – 13 – 14 – 4 – 1(S) – Finish
7	E	Start – 4 – 13 – 11 – 4 – 1(S) – Finish
8	NE	Start – 11 – 13 – 14 – 11 – 13 – 1(S) – Finish
9	N	Start – 4 – 13 – 11 – 4 – 1(S) – Finish
10	NW	Start – 11 – 12 – 14 – 12 – 1(S) – Finish
11	W	Start – 11 – 13 – 3 – 1(S) – Finish
12	WSW	Start – 11 – 14 – 3 – 1(S) – Finish

For On the Wind Starts

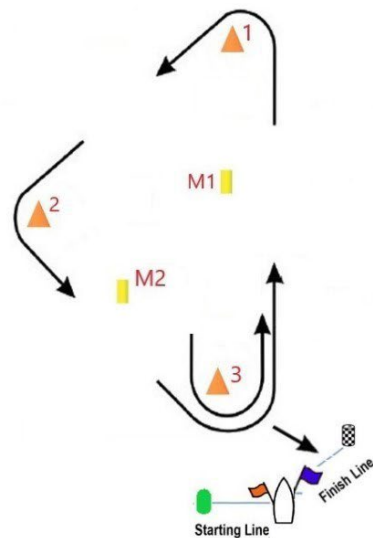
Division	Course 1
Sabre	Start - 1 - 2 - 3 - 1 - 3 - 1 - 2 - 3 - Finish
Laser / Aero	Start - 1 - 2 - 3 - 1 - 3 - 1 - 2 - 3 - Finish
Contenders	Start - 1 - 2 - 3 - 1 - 3 - 1 - 2 - 3 - Finish
Mixed Mono - Pacer	Start - 1 - 3 - 1 - 3 - 1 - 3 - 1 - 3 - Finish
Minnow / Opti / Open Skiff	Start - M1 - M2 - M3 - M1 - M3 - Finish
Green Fleet	Special Course - Refer Noticeboard

Division	Course 2
Sabre	Start - 1 - 2 - 3 - 1 - 3 - Finish
Laser / Aero	Start - 1 - 2 - 3 - 1 - 3 - Finish
Contenders	Start - 1 - 2 - 3 - 1 - 3 - Finish
Mixed Mono - Pacer	Start - 1 - 3 - 1 - 3 - Finish
Minnow / Opti / Open Skiff	Start - M1 - M2 - 3 - M1 - 3 - Finish
Green Fleet	Special Course - Refer Noticeboard

COURSE 1



COURSE 2



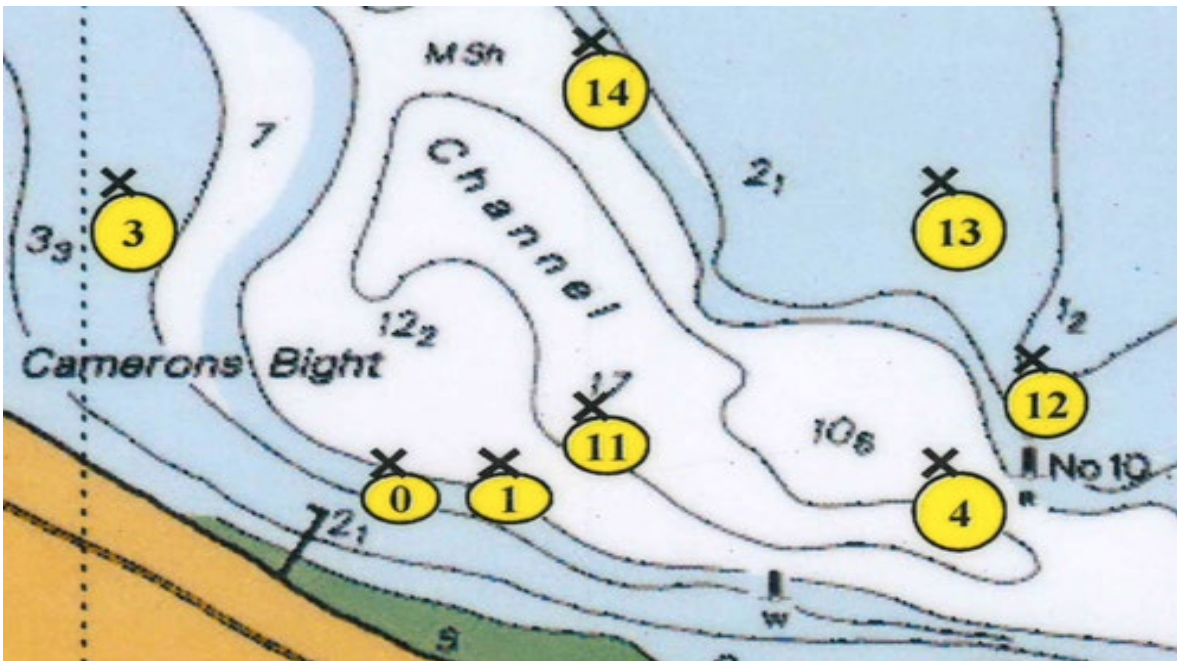
All Marks to PORT

Laid Mark Descriptions

Mark	Description	Comment
PIN	Green cylindrical inflatable	Start line pin
FINISH	Black/White checked cylindrical inflatable	
Marks 1, 2, 3	Orange truncated conical inflatable	
M1, M2, M3	Yellow cylindrical inflatable	Junior Course marks

Fixed Club Mark Locations

Blairgowrie Yacht Squadron Racing Area



Numeral Pennants Course

